

DRAFT

APPENDIX A – AMELIA COUNTY

Hazard Rankings

Status of Mitigation Actions

Building Permit Data

Land Use Cover Map

Future Land Use Map

Critical Facilities Maps

Flood Zone Map

DRAFT

Hazard Rankings – Amelia County (From Qualitative Assessment and Local Input)

Hazard	Likelihood	Spatial Extent	Potential Impact	HAZARD RATING
Drought	3	2	2	7
Winter Storms	2	3	2	7
Severe Thunderstorms and Tornadoes	2	2	2	6
Flood	2	2	1	5
Dam/Levee Failure	2	1	1	4
Earthquakes	1	2	1	4
Wildfire	1	1	1	3
Hurricanes and Tropical Storms	1	1	1	3
Erosion	1	1	1	3
Landslides	1	1	1	3
Sinkholes	0	1	1	2

Hazard rankings are based on a qualitative assessment, as described below. The values assigned for each option chosen are added together for each hazard to arrive at a total score.

	Assigned Value	Definition
Likelihood of Occurrence		
Highly Likely	3	Near 100% annual probability
Likely	2	Between 10 and 100% annual probability
Possible	1	Between 1 and 10% annual probability
Unlikely	0	Less than 1% annual probability
Spatial Extent		
Large	3	More than 50% of area affected
Moderate	2	Between 10 and 50% of area affected
Small	1	Less than 10% of area affected
Potential Impact		
Catastrophic	4	High number of deaths/injuries possible. More than 50% of property in affected area damaged or destroyed. Complete shutdown of facilities for 30 days or more.
Critical	3	Multiple deaths/injuries possible. More than 25% of property in affected area damaged or destroyed. Complete shutdown of facilities for more than one week.
Limited	2	Minor injuries only. More than 10% of property in affected area damaged or destroyed. Complete shutdown of facilities for more than one day.
Minor	1	Very few injuries, if any. Only minor property damage and minimal disruption on quality of life. Temporary shutdown of facilities.

DRAFT

Detailed Information/Status of Local Mitigation Actions (includes detailed data for each action, as requested by FEMA)

Amelia County Mitigation Action 1	Elevate and relocate homes or critical infrastructures out of flood zones.	
Category:	Prevention/Structural Projects	
Hazard(s) Addressed:	Flood	
Priority (High, Moderate, Low):	Medium	
Estimated Cost:	\$200,000	
Potential Funding Sources:	FEMA grant funding, possibly local funds	
Lead Agency/Department Responsible:	County Building Inspector	
Implementation Schedule:	Near term	
Status: No action taken – awaiting funds		

Amelia County Mitigation Action 2	Construct waterproof barriers at the wastewater treatment plant to prevent future flood damages if the future relocation plan does not eliminate the hazard soon enough.	
Category:	Prevention/Structural Projects	
Hazard(s) Addressed:	Flood	
Priority (High, Moderate, Low):	Medium	
Estimated Cost:	\$200,000	
Potential Funding Sources:	FEMA grant funding, possibly local funds	
Lead Agency/Department Responsible:	County Wastewater Plan Manager	
Implementation Schedule:	Near term	
Status: No action taken – awaiting funds		

Amelia County Mitigation Action 3	Secure mobile homes beyond standard tie-downs to reduce their vulnerability to high winds.	
Category:	Prevention/Structural Projects	
Hazard(s) Addressed:	Wind/Tornadoes/Severe Thunderstorms	
Priority (High, Moderate, Low):	Medium	
Estimated Cost:	\$750,000	
Potential Funding Sources:	County, local businesses	
Lead Agency/Department Responsible:	County Emergency Management Office, Building Inspector	
Implementation Schedule:	Near term	
Status: No action taken – awaiting funds		

DRAFT

Amelia County Mitigation Action 4	Install window clips for mounting plywood or install hurricane shutters to protect windows of critical facilities.
Category:	Prevention/Structural Projects
Hazard(s) Addressed:	Wind/Tornadoes/Severe Thunderstorms
Priority (High, Moderate, Low):	Medium
Estimated Cost:	\$750,000
Potential Funding Sources:	County, possibly federal grant funding
Lead Agency/Department Responsible:	County Emergency Management Office, Building Inspector
Implementation Schedule:	Near term
Status: No action taken – awaiting funds	

Amelia County Mitigation Action 5	Install safe rooms and develop severe weather shelters to provide safer locations for the public during rapidly developing weather events.
Category:	Prevention/Structural Projects
Hazard(s) Addressed:	Wind/Tornadoes/Severe Thunderstorms
Priority (High, Moderate, Low):	Medium
Estimated Cost:	\$750,000
Potential Funding Sources:	County, possibly federal grant funding
Lead Agency/Department Responsible:	County Emergency Management Office, Building Inspector
Implementation Schedule:	Near term
Status: No action taken – awaiting funds	

Amelia County Mitigation Action 6	Build redundant communications system components to back-up primary communications.
Category:	Emergency Services
Hazard(s) Addressed:	Multiple
Priority (High, Moderate, Low):	High
Estimated Cost:	\$50,000
Potential Funding Sources:	FEMA grant funding, local funds
Lead Agency/Department Responsible:	County Emergency Management Office
Implementation Schedule:	Near term
Status: No action taken – awaiting funds	

DRAFT

Amelia County Mitigation Action 7	When new homes are constructed, provide information to encourage clearing trees, brush, and other flammable natural materials a safe distance from the home creating a “Green Zone” between the forest and the structures.
Category:	Prevention
Hazard(s) Addressed:	Fire
Priority (High, Moderate, Low):	High
Estimated Cost:	Minimal – Staff time, Virginia Department of Forestry has brochures available
Potential Funding Sources:	N/A
Lead Agency/Department Responsible:	County Emergency Management Office, Building Inspector
Implementation Schedule:	Near term
Status: No action taken – need to coordinate with VDOT on this.	

Amelia County Mitigation Action 8	Evaluate current staff levels to ensure the County has enough trained staff to manage mitigation strategies as well as emergencies on the local level.
Category:	Prevention/Emergency Services
Hazard(s) Addressed:	Multiple
Priority (High, Moderate, Low):	Medium
Estimated Cost:	Minimal
Potential Funding Sources:	County funding, possibly VDEM
Lead Agency/Department Responsible:	County Emergency Management Office
Implementation Schedule:	Short term
Status: Completed. County has hired a full-time emergency manager	

Amelia County Mitigation Action 9	Relocate the Emergency Operations facility to the County Administration Building, to deal with the expected growth and expansion of County services and staffing resources, and install hurricane shutters or window clips to protect the new facility.
Category:	Emergency Services
Hazard(s) Addressed:	Multiple
Priority (High, Moderate, Low):	High
Estimated Cost:	\$10,000
Potential Funding Sources:	County funding, possible DHS grants
Lead Agency/Department Responsible:	County Emergency Management Office
Implementation Schedule:	Near term
Status: Under way	

DRAFT

Amelia County Mitigation Action 10	Information from this plan will be provided to residents and businesses through the local newspaper, inserted in tax bills or regular mailings to all addresses, and in public meetings.	
Category:	Prevention/Emergency Services	
Hazard(s) Addressed:	Multiple	
Priority (High, Moderate, Low):	Medium	
Estimated Cost:	\$500/year	
Potential Funding Sources:	County	
Lead Agency/Department Responsible:	County Emergency Management Office, County Administrator's Office	
Implementation Schedule:	Near term	
Status: No action taken – lack of staff resources		

Amelia County Mitigation Action 11	Provide recommended methods of reducing risk and vulnerability on the County's website. Develop and distribute educational brochures to all school children to be taken home to parents.	
Category:	Prevention/Emergency Services	
Hazard(s) Addressed:	Multiple	
Priority (High, Moderate, Low):	Medium	
Estimated Cost:	\$1,000	
Potential Funding Sources:	County, possibly VDEM and DHS grants	
Lead Agency/Department Responsible:	County Emergency Management Office, County Administrator's Office	
Implementation Schedule:	Near term	
Status: New County web site developed, these elements will be added to the site.		

Amelia County Mitigation Action 12	Contact civic organizations, church organizations, and business groups to develop a Safe Community Committee. The County will facilitate the committee, which will develop recommendations for improving safety in the community and providing recommendations to provide educational information on a County-wide basis.	
Category:	Prevention/Emergency Services	
Hazard(s) Addressed:	Multiple	
Priority (High, Moderate, Low):	Medium	
Estimated Cost:	\$100	
Potential Funding Sources:	County funds	
Lead Agency/Department Responsible:	County Emergency Management Office, County Administrator's Office	
Implementation Schedule:	Near term	
Status: No action taken – awaiting funds		

DRAFT

Amelia County has added two (2) new mitigation actions, as seen below.

Amelia County New Mitigation Action	Prohibit or limit floodplain development through regulatory and/or incentive-based measures.
Category:	Prevention/Property Protection
Hazard(s) Addressed:	Flood
Priority (High, Moderate, Low):	Moderate
Estimated Cost:	None – would only involve changes to ordinances
Potential Funding Sources:	N/A
Lead Agency/Department Responsible:	County Planning Department
Implementation Schedule:	Short/near term
Status: Ongoing – County Ordinances already restrict building in flood areas	

Amelia County New Mitigation Action	Install storm water drainage system to prevent flooding in buildings in flood prone areas.
Category:	Prevention/Property Protection
Hazard(s) Addressed:	Flood
Priority (High, Moderate, Low):	High
Estimated Cost:	Depending on size of area to be protected, could be anywhere from \$100,000 to \$500,000 or more
Potential Funding Sources:	FEMA grant, with local funding match
Lead Agency/Department Responsible:	County Administration/Planning Department
Implementation Schedule:	Dependant on availability of funding
Status: No action taken, lack of funding	

Amelia County chose to remove one (1) action from its list, as seen below.

Amelia County Mitigation Action	Emergency Management personnel will coordinate and plan with other jurisdictions in the region. Mitigation strategies will be compared regionally and modified to make local improvements.
Category:	Prevention/Emergency Services
Hazard(s) Addressed:	Multiple
Priority (High, Moderate, Low):	High
Estimated Cost:	Minimal – Staff time
Potential Funding Sources:	N/A
Lead Agency/Department Responsible:	County Emergency Management Office
Implementation Schedule:	N/A
Status: <u>Remove</u>. As Amelia County is now part of the Regional Plan, this activity is deemed to no longer be necessary.	

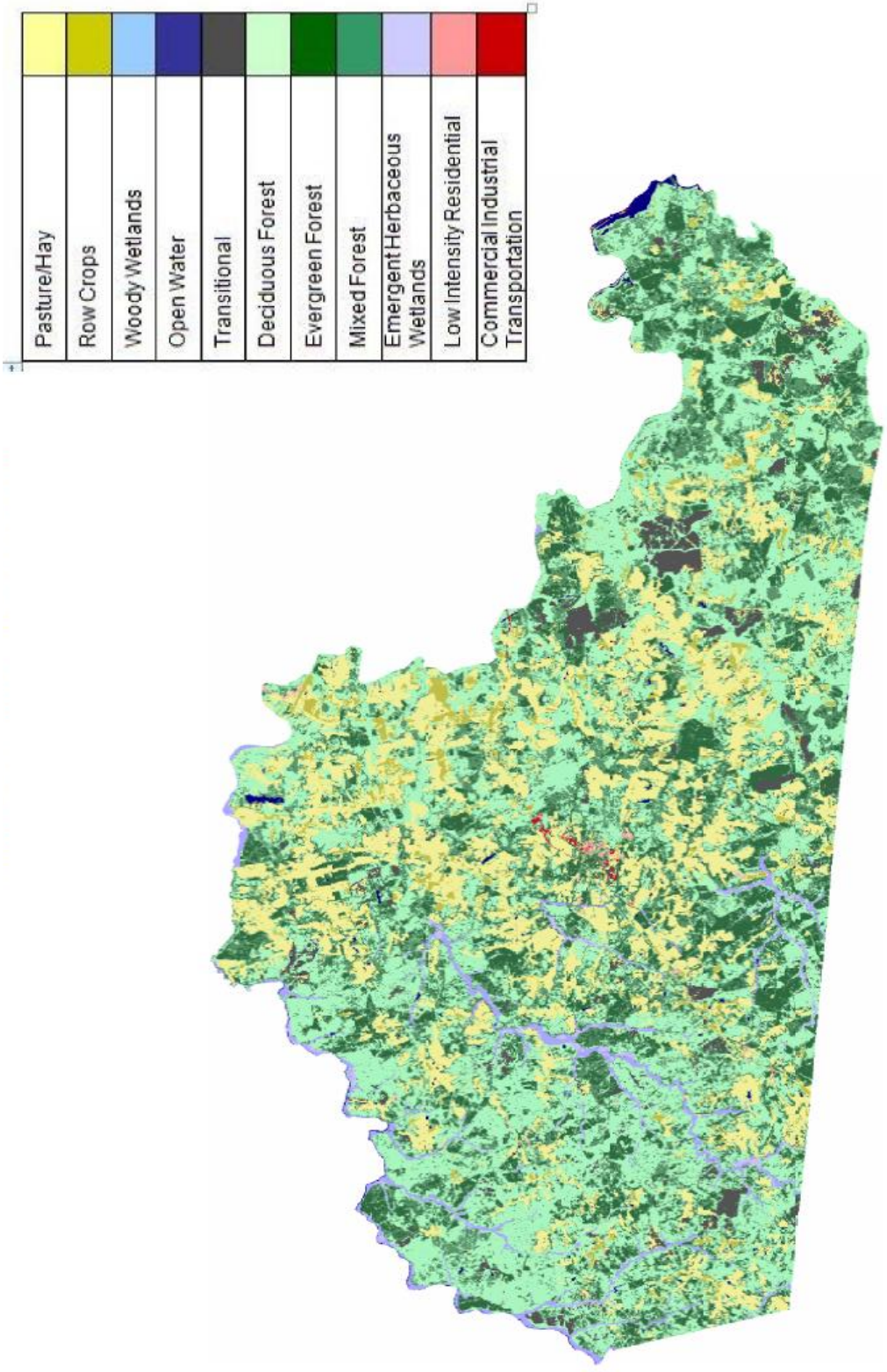
DRAFT

Building Permit Data – Amelia County

Year	Residential Permits Issued	Commercial Permits Issued
1981	59	6
1982	55	0
1983	77	0
1984	82	0
1985	86	0
1986	85	0
1987	129	8
1988	134	7
1989	158	12
1990	179	4
1991	163	3
1992	109	18
1993	175	23
1994	158	20
1995	174	27
1996	169	31
1997	176	25
1998	179	16
1999	169	17
2000	147	21
2001	137	20
2002	136	15
2003	162	18
2004	161	32
2005	165	17
2006	208	24
2007	122	23
2008	103	18
2009	75	18

DRAFT

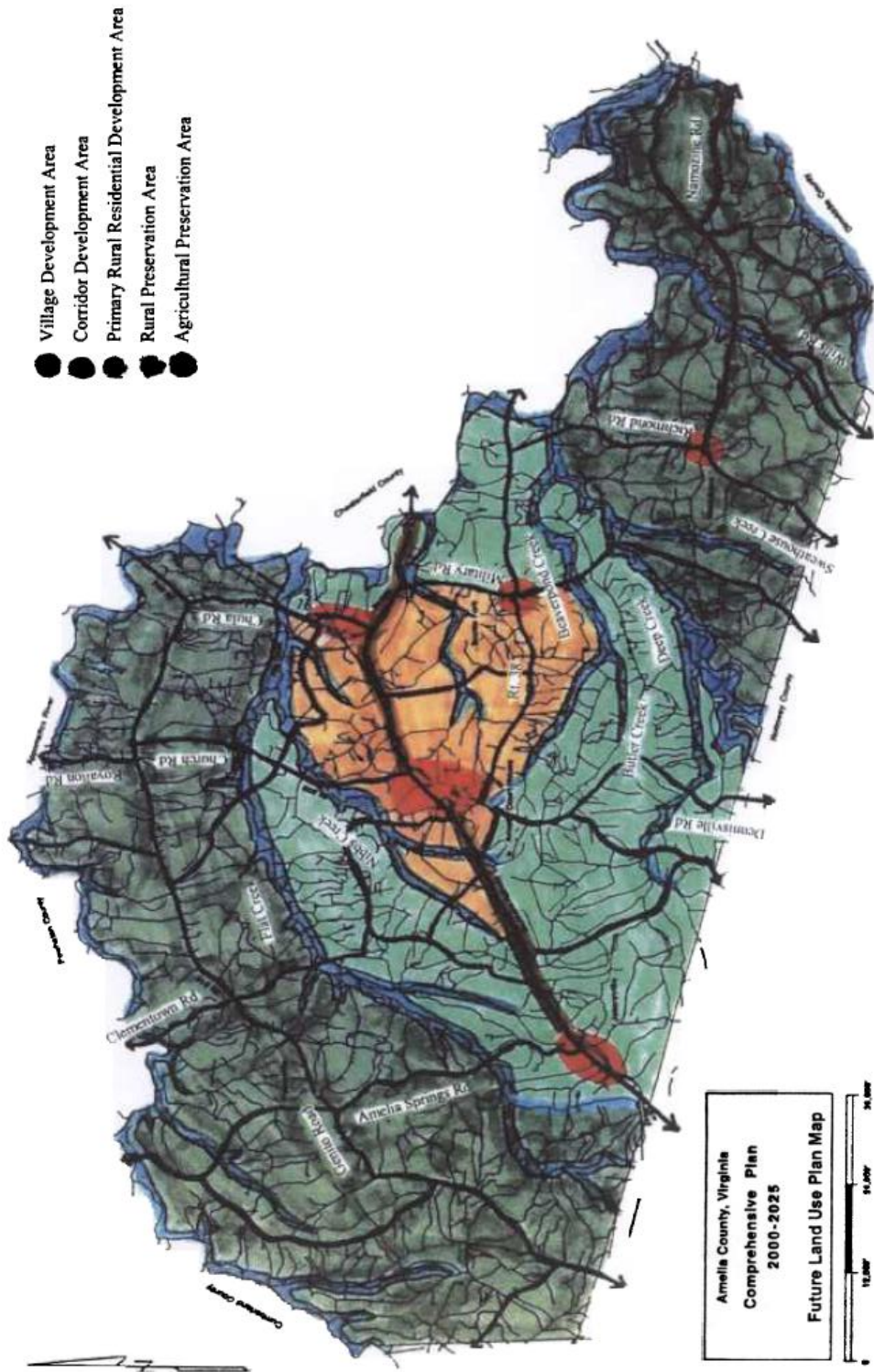
Amelia County Land Use Cover Map



Created by CRC - August 2010
Source: National Land Cover Dataset, UVA Geostat Center

DRAFT

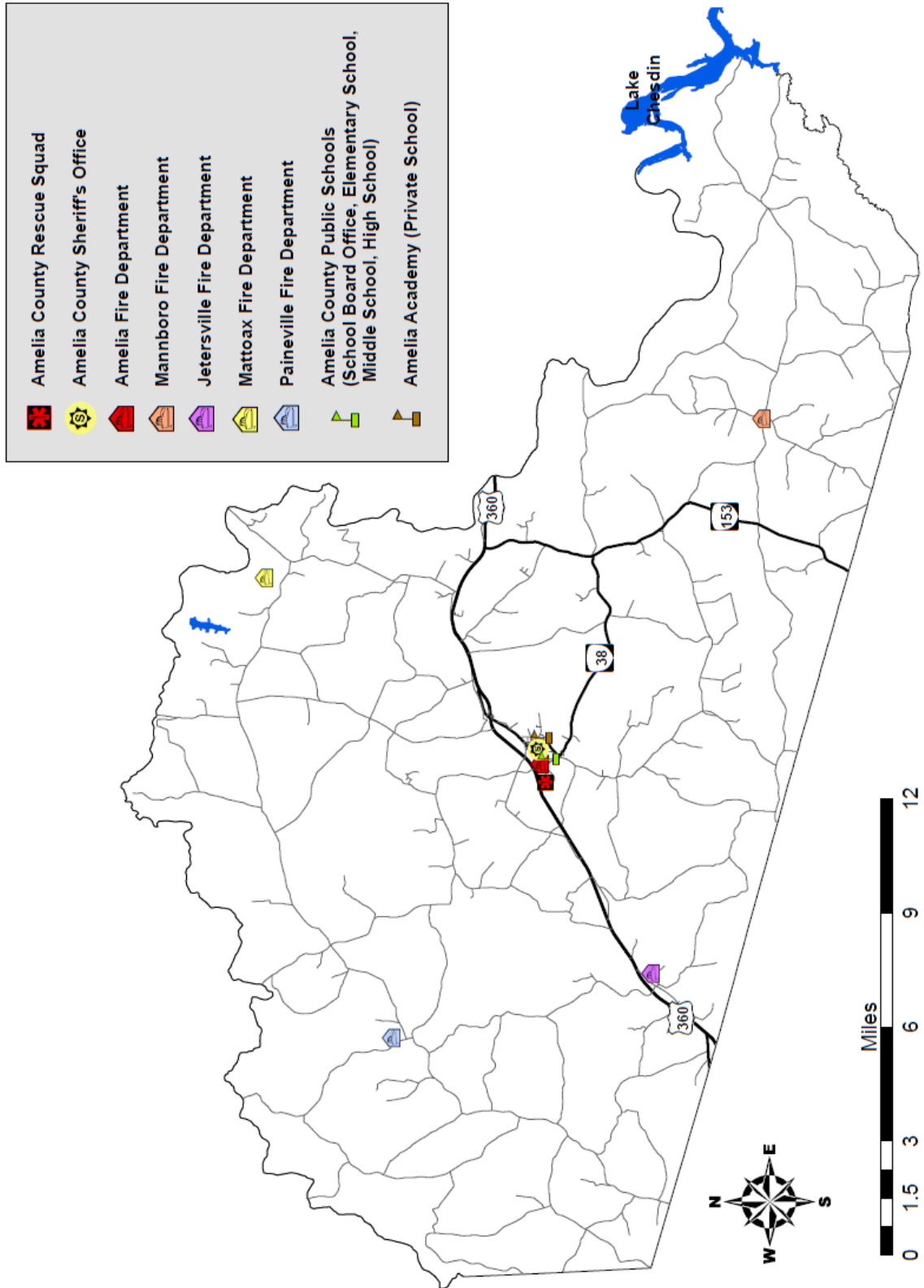
Amelia County Future Land Use Map



Source: Amelia County Comp Plan

DRAFT

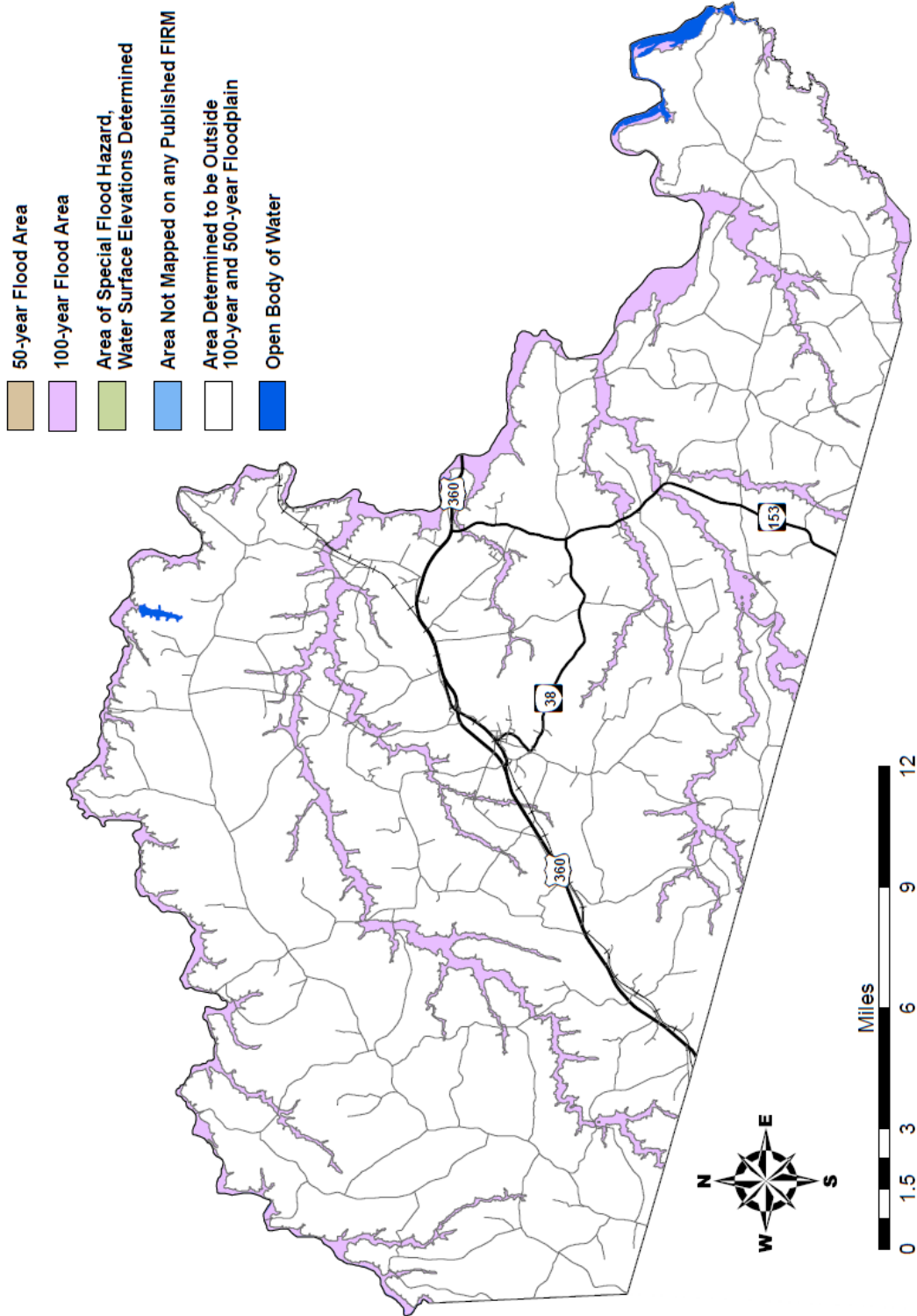
Amelia County Critical Facilities Map



Map created by CRC – February 2011 (source: Amelia County)

DRAFT

Amelia County Flood Zone Map



Map created by CRC – February 2011 (source: FEMA)