

***(DRAFT)***

**APPENDIX D – CUMBERLAND COUNTY**

Hazard Rankings

Status of Mitigation Actions

Building Permit Data

Land Use Cover Map

Future Land Use Map

Critical Facilities Map

Flood Zone Map

# **(DRAFT)**

## **Hazard Rankings – Cumberland Co. (From Qualitative Assessment and Local Input)**

Hazard	Likelihood	Spatial Extent	Potential Impact	HAZARD RATING
Hurricanes and Tropical Storms	2	3	3	<b>8</b>
Severe Thunderstorms and Tornadoes	3	2	2	<b>7</b>
Winter Storms	2	3	2	<b>7</b>
Drought	2	2	1	<b>5</b>
Flood	2	1	1	<b>4</b>
Wildfire	2	1	1	<b>4</b>
Dam/Levee Failure	1	1	1	<b>3</b>
Earthquakes	1	1	1	<b>3</b>
Erosion	0	1	1	<b>2</b>
Landslides	0	1	1	<b>2</b>
Sinkholes	0	1	1	<b>2</b>

Hazard rankings are based on a qualitative assessment, as described below. The values assigned for each option chosen are added together for each hazard to arrive at a total score.

	Assigned Value	Definition
<b>Likelihood of Occurrence</b>		
Highly Likely	3	Near 100% annual probability
Likely	2	Between 10 and 100% annual probability
Possible	1	Between 1 and 10% annual probability
Unlikely	0	Less than 1% annual probability
<b>Spatial Extent</b>		
Large	3	More than 50% of area affected
Moderate	2	Between 10 and 50% of area affected
Small	1	Less than 10% of area affected
<b>Potential Impact</b>		
Catastrophic	4	High number of deaths/injuries possible. More than 50% of property in affected area damaged or destroyed. Complete shutdown of facilities for 30 days or more.
Critical	3	Multiple deaths/injuries possible. More than 25% of property in affected area damaged or destroyed. Complete shutdown of facilities for more than one week.
Limited	2	Minor injuries only. More than 10% of property in affected area damaged or destroyed. Complete shutdown of facilities for more than one day.
Minor	1	Very few injuries, if any. Only minor property damage and minimal disruption on quality of life. Temporary shutdown of facilities.

# **(DRAFT)**

## Detailed Information/Status of Local Mitigation Actions (includes detailed data for each action, as requested by FEMA)

<b>Cumberland County Mitigation Action 1</b>	<b>Digitize tax, building footprint, and floodplain for use with GIS.</b>	
<b>Category:</b>	Prevention	
<b>Hazard(s) Addressed:</b>	Multiple	
<b>Priority (High, Moderate, Low):</b>	Moderate/High	
<b>Estimated Cost:</b>	\$50,000 - \$75,000, based on estimates from other localities	
<b>Potential Funding Sources:</b>	Would likely seek grants from FEMA, other sources	
<b>Lead Agency/Department Responsible:</b>	County Planning Department	
<b>Implementation Schedule:</b>	Dependant on availability of funding	
<b>Status: No action taken – lack of funding/staff resources</b>		

<b>Cumberland County Mitigation Action 2</b>	<b>Upgrade shelter, emergency generators.</b>	
<b>Category:</b>	Emergency Services	
<b>Hazard(s) Addressed:</b>	Multiple	
<b>Priority (High, Moderate, Low):</b>	High	
<b>Estimated Cost:</b>	\$175,000	
<b>Potential Funding Sources:</b>	Would likely seek grant funding	
<b>Lead Agency/Department Responsible:</b>	County Building Inspector/E-911 Coordinator	
<b>Implementation Schedule:</b>	Dependant on availability of funding	
<b>Status: Completed. New middle/high school complex has been set up to operate as an emergency shelter.</b>		

Cumberland County added one (1) new mitigation action, as seen below.

<b>Cumberland County New Mitigation Action</b>	<b>Prohibit or limit floodplain development through regulatory and/or incentive-based measures.</b>	
<b>Category:</b>	Prevention/Property Protection	
<b>Hazard(s) Addressed:</b>	Flood	
<b>Priority (High, Moderate, Low):</b>	Moderate	
<b>Estimated Cost:</b>	None – would only involve changes to ordinances	
<b>Potential Funding Sources:</b>	N/A	
<b>Lead Agency/Department Responsible:</b>	County Planning Department, town staffs	
<b>Implementation Schedule:</b>	Short/near term	
<b>Status: Ongoing – enforced by County Ordinances</b>		

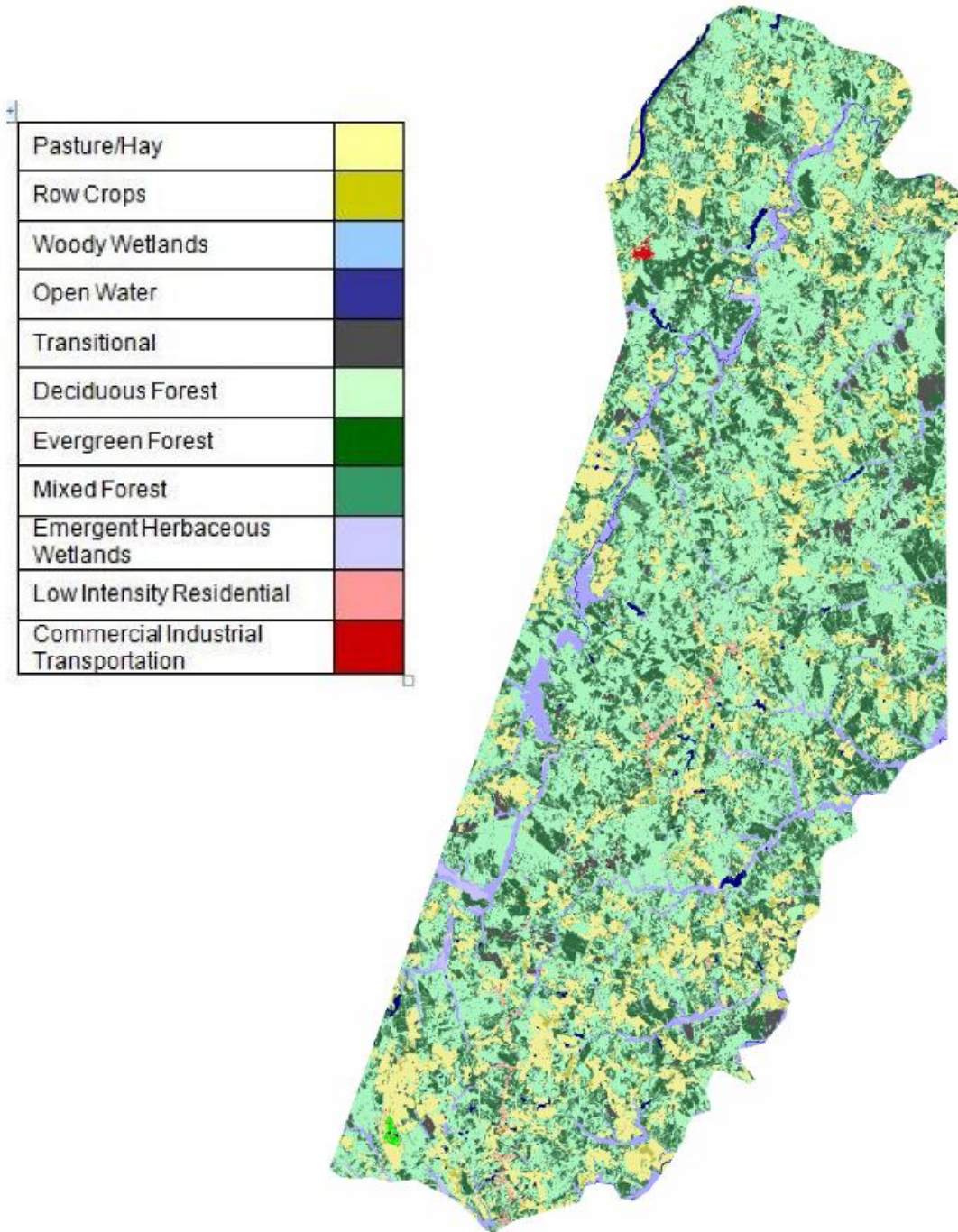
# **(DRAFT)**

## **Building Permit Data – Cumberland County**

Year	Residential Permits Issued	Commercial Permits Issued
1991	65	4
1992	113	4
1993	86	12
1994	114	8
1995	111	12
1996	N/A	N/A
1997	N/A	N/A
1998	N/A	N/A
1999	N/A	N/A
2000	N/A	N/A
2001	N/A	N/A
2002	120	4
2003	103	7
2004	86	22
2005	92	13
2006	105	13
2007	80	26
2008	66	24
2009	43	27

**(DRAFT)**

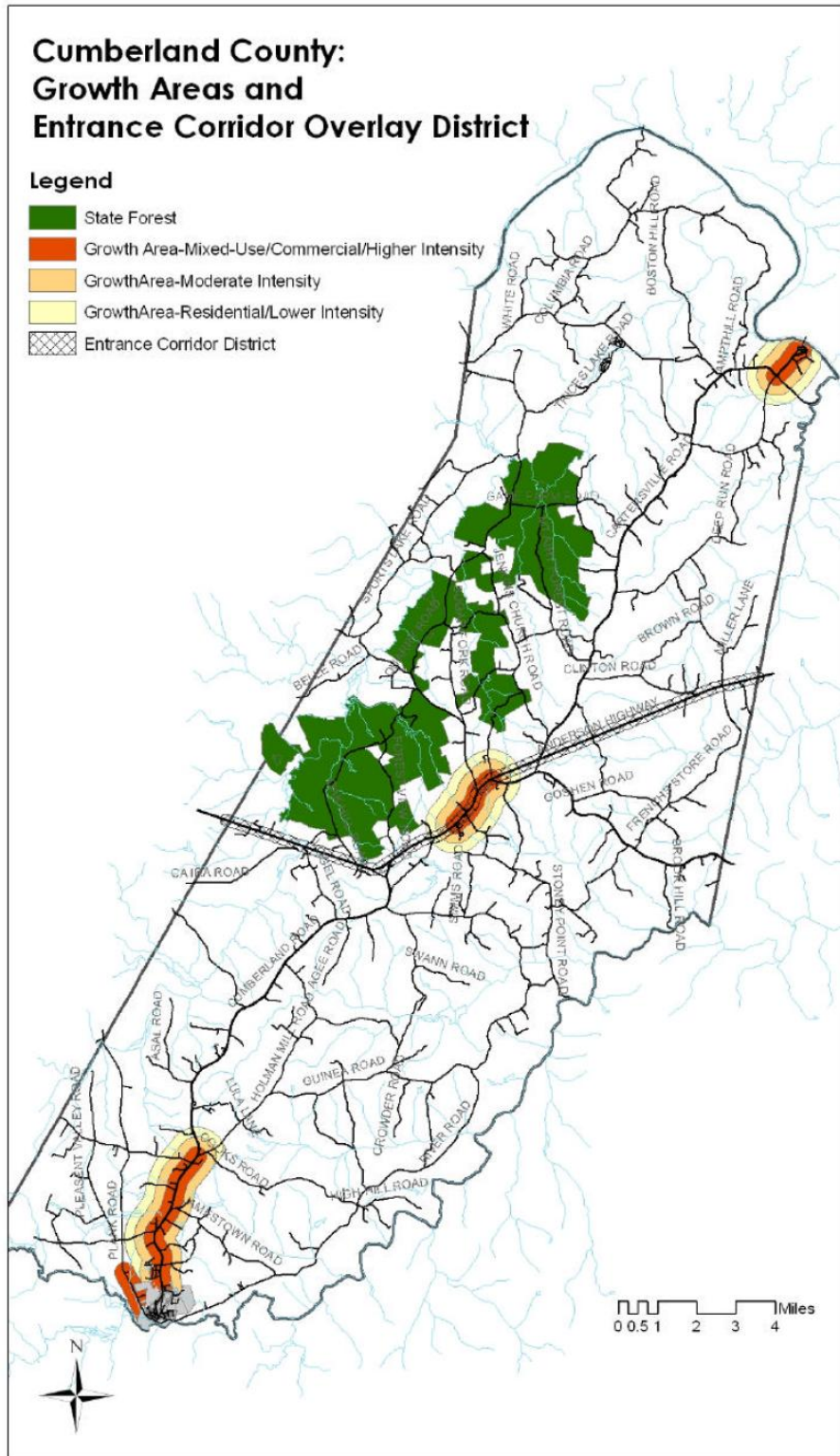
**Cumberland County Land Use Cover Map**



Created by CRC - August 2010  
Source: National Land Cover Dataset, UVA Geostat Center

**(DRAFT)**

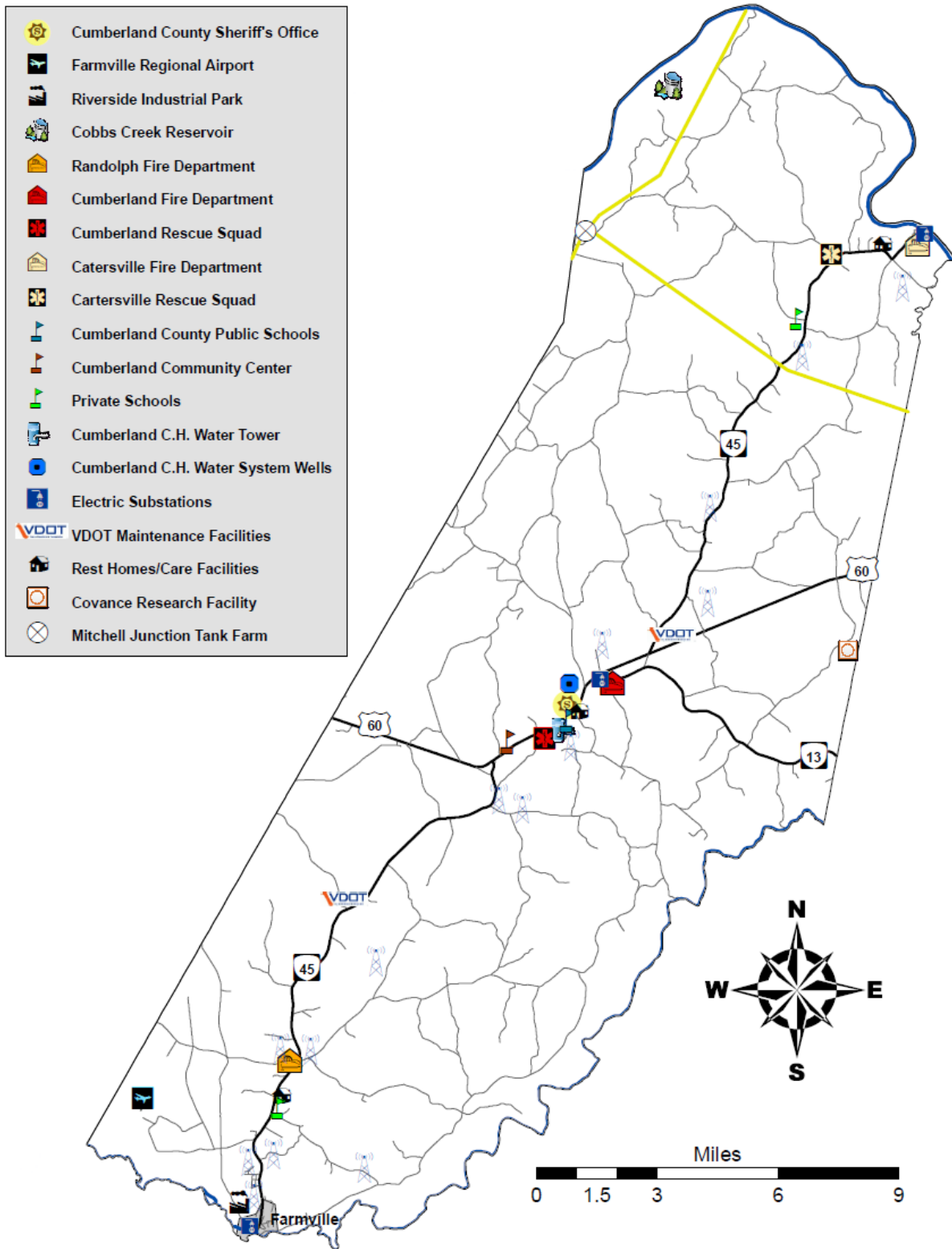
**Cumberland County Future Land Use Map**



**Source – Cumberland County Planning and Zoning**

**(DRAFT)**

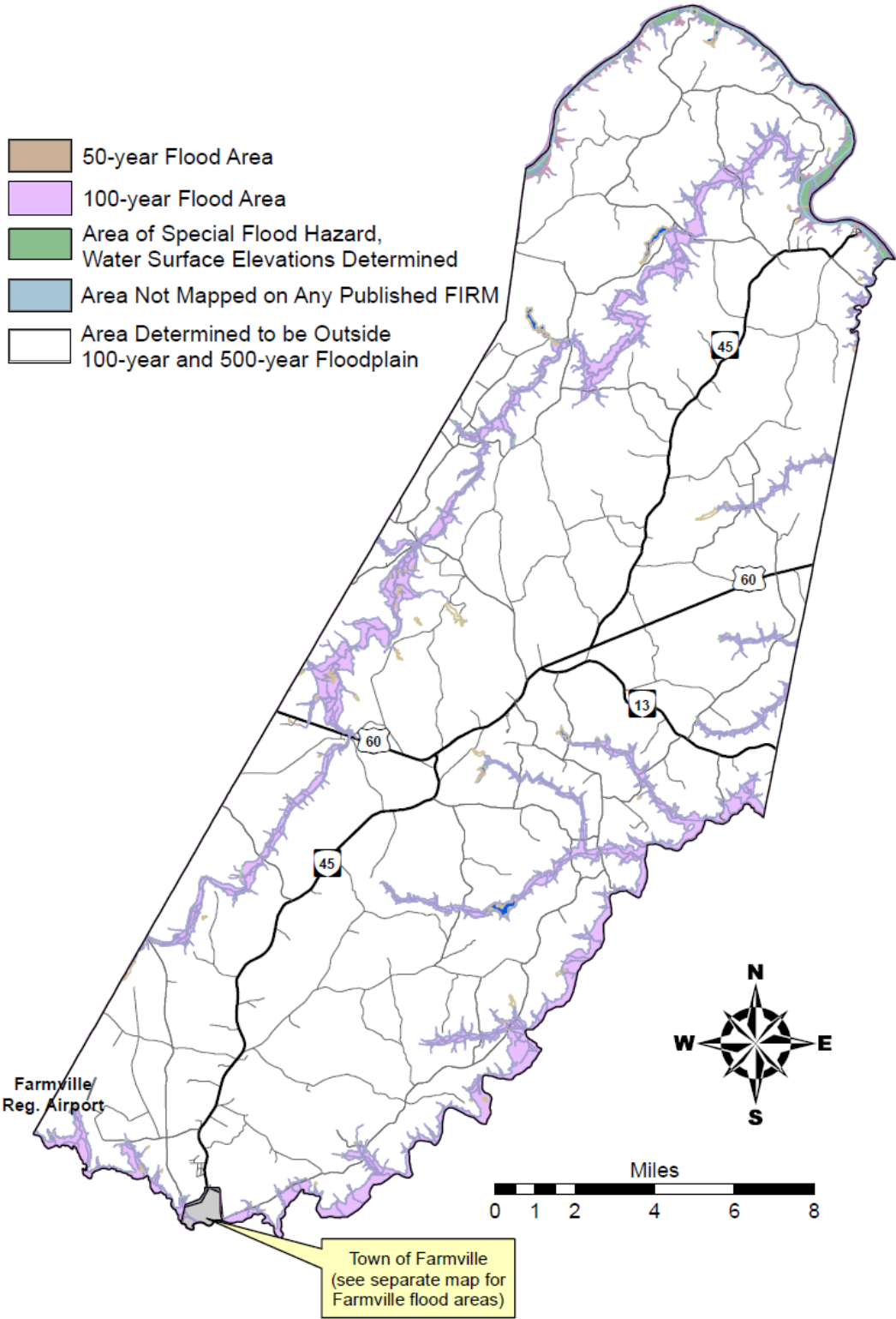
**Cumberland County Critical Facilities Map**



Map created by CRC – February 2011 (source: Cumberland County)

**(DRAFT)**

**Cumberland County Flood Zone Map**



Map created by CRC – February 2011 (source: FEMA)