

**(DRAFT)**

**APPENDIX F – NOTTOWAY COUNTY AND TOWNS OF BLACKSTONE,  
BURKEVILLE, CREWE**

Hazard Rankings

Status of Mitigation Actions

Building Permit Data

Land Use Cover Map

Future Land Use Maps

Critical Facilities Maps

Flood Zone Map

# **(DRAFT)**

## **Hazard Rankings – Nottoway Co. (From Qualitative Assessment and Local Input)**

Hazard	Likelihood	Spatial Extent	Potential Impact	HAZARD RATING
Hurricanes and Tropical Storms	2	3	3	<b>8</b>
Drought	3	2	3	<b>8</b>
Severe Thunderstorms and Tornadoes	3	2	2	<b>7</b>
Winter Storms	2	2	2	<b>6</b>
Earthquakes	1	2	1	<b>4</b>
Wildfire	2	1	1	<b>4</b>
Erosion	1	1	1	<b>3</b>
Flood	1	1	1	<b>3</b>
Dam/Levee Failure	1	1	1	<b>3</b>
Landslides	1	1	1	<b>3</b>
Sinkholes	1	1	1	<b>3</b>

Hazard rankings are based on a qualitative assessment, as described below. The values assigned for each option chosen are added together for each hazard to arrive at a total score.

	Assigned Value	Definition
<b>Likelihood of Occurrence</b>		
Highly Likely	3	Near 100% annual probability
Likely	2	Between 10 and 100% annual probability
Possible	1	Between 1 and 10% annual probability
Unlikely	0	Less than 1% annual probability
<b>Spatial Extent</b>		
Large	3	More than 50% of area affected
Moderate	2	Between 10 and 50% of area affected
Small	1	Less than 10% of area affected
<b>Potential Impact</b>		
Catastrophic	4	High number of deaths/injuries possible. More than 50% of property in affected area damaged or destroyed. Complete shutdown of facilities for 30 days or more.
Critical	3	Multiple deaths/injuries possible. More than 25% of property in affected area damaged or destroyed. Complete shutdown of facilities for more than one week.
Limited	2	Minor injuries only. More than 10% of property in affected area damaged or destroyed. Complete shutdown of facilities for more than one day.
Minor	1	Very few injuries, if any. Only minor property damage and minimal disruption on quality of life. Temporary shutdown of facilities.

# (DRAFT)

## Detailed Information/Status of Local Mitigation Actions (includes detailed data for each action, as requested by FEMA)

### Nottoway County

<b>Nottoway County Mitigation Action 1</b>	<b>Long-term plan for additional water supplies (to respond to drought/water emergency) – action applies to the County and the Towns of Burkeville, Crewe and Blackstone.</b>
<b>Category:</b>	Prevention
<b>Hazard(s) Addressed:</b>	Drought, Contamination of existing supply
<b>Priority (High, Moderate, Low):</b>	High/Moderate
<b>Estimated Cost:</b>	Unknown at this time
<b>Potential Funding Sources:</b>	Grants if available
<b>Lead Agency/Department Responsible:</b>	County Planner and/or town staffs, depending on whether they work together or separate (local utility departments)
<b>Implementation Schedule:</b>	Dependant on availability of funding/whether County and Towns work together or separately
<b>Status: In development – staff in place, awaiting funding</b>	

<b>Nottoway County Mitigation Action 2</b>	<b>Prohibit or limit floodplain development through regulatory and/or incentive-based measures.</b>
<b>Category:</b>	Prevention/Property Protection
<b>Hazard(s) Addressed:</b>	Flood
<b>Priority (High, Moderate, Low):</b>	Moderate
<b>Estimated Cost:</b>	None – would only involve changes to ordinances
<b>Potential Funding Sources:</b>	N/A
<b>Lead Agency/Department Responsible:</b>	County Planning Department, town staffs
<b>Implementation Schedule:</b>	Short/near term
<b>Status: Ongoing – enforced through County ordinances</b>	

# (DRAFT)

Nottoway County has added four new mitigation actions, as listed below:

<b>Nottoway County New Mitigation Action</b>		<b>Ensure that emergency shelters are well-equipped and readily available for all citizens of the county</b>
<b>Category:</b>		Emergency Services
<b>Hazard(s) Addressed:</b>		Multiple
<b>Priority (High, Moderate, Low):</b>		High
<b>Estimated Cost:</b>		Unknown at this time
<b>Potential Funding Sources:</b>		Grants/federal programs
<b>Lead Agency/Department Responsible:</b>		County Planning Department, town staffs
<b>Implementation Schedule:</b>		Dependant on availability of funding
<b>Status: No action taken yet, waiting for funding</b>		

<b>Nottoway County New Mitigation Action</b>		<b>Implement community early warning systems designed to notify the general public during weather related emergencies.</b>
<b>Category:</b>		Emergency Services
<b>Hazard(s) Addressed:</b>		Multiple
<b>Priority (High, Moderate, Low):</b>		High/Moderate
<b>Estimated Cost:</b>		Depends on what, if any, new equipment, staffing, and training would be required
<b>Potential Funding Sources:</b>		Grant Funding
<b>Lead Agency/Department Responsible:</b>		County Administration/Planning Department
<b>Implementation Schedule:</b>		Dependant on availability of funding
<b>Status: No action taken yet – waiting on funding</b>		

<b>Nottoway County New Mitigation Action</b>		<b>Provide public education and awareness to better inform citizens of Nottoway County about natural hazards and their role in prevention</b>
<b>Category:</b>		Public education and awareness
<b>Hazard(s) Addressed:</b>		Multiple
<b>Priority (High, Moderate, Low):</b>		High
<b>Estimated Cost:</b>		Unknown at this time
<b>Potential Funding Sources:</b>		Local, grants, planning grants
<b>Lead Agency/Department Responsible:</b>		County Administration/Planning Department
<b>Implementation Schedule:</b>		Dependant on availability of funding
<b>Status: No action taken – lack of funding/staff</b>		

# (DRAFT)

Nottoway County New Mitigation Action	Install storm water drainage system to prevent flooding in homes and buildings in flood prone areas – action applies to County and the towns of Blackstone, Burkeville, and Crewe.
<b>Category:</b>	Prevention/Property Protection
<b>Hazard(s) Addressed:</b>	Flood
<b>Priority (High, Moderate, Low):</b>	High
<b>Estimated Cost:</b>	Depending on size of area to be protected, could be anywhere from \$100,000 to \$500,000 or more per area
<b>Potential Funding Sources:</b>	FEMA grant, with local funding match
<b>Lead Agency/Department Responsible:</b>	County Administration/Planning Department, town staffs
<b>Implementation Schedule:</b>	Dependant on availability of funding
<b>Status: No action taken, lack of funding</b>	

Nottoway County chose to remove a number of mitigation actions, as listed below. Since the development of the original Plan, the County has looked at priorities and available staff/financial resources and decided some actions were not feasible at this time.

Nottoway County Mitigation Action	Develop/update water management/emergency response plan.
<b>Category:</b>	Prevention
<b>Hazard(s) Addressed:</b>	Drought
<b>Priority (High, Moderate, Low):</b>	High
<b>Estimated Cost:</b>	Minimal or none, depending on whether the County does its own or seeks outside help
<b>Potential Funding Sources:</b>	N/A
<b>Lead Agency/Department Responsible:</b>	County Administration/Planning Department
<b>Implementation Schedule:</b>	N/A
<b>Status: <u>Remove</u> – lack of staff resources</b>	

Nottoway County Mitigation Action	Require and maintain safe access for fire apparatus to wildland/urban interface neighborhoods/properties.
<b>Category:</b>	Property Protection/Emergency Services
<b>Hazard(s) Addressed:</b>	Fire
<b>Priority (High, Moderate, Low):</b>	Moderate
<b>Estimated Cost:</b>	Minimal – could be as simple as change in ordinances
<b>Potential Funding Sources:</b>	N/A
<b>Lead Agency/Department Responsible:</b>	Local governing bodies
<b>Implementation Schedule:</b>	N/A
<b>Status: <u>Remove</u> – inadequate staff resources</b>	

# (DRAFT)

Nottoway County Mitigation Action		Develop terrorism response plan.
Category:	Emergency Services	
Hazard(s) Addressed:	Terrorism/Man-made	
Priority (High, Moderate, Low):	High	
Estimated Cost:	Probably minimal – planning project	
Potential Funding Sources:	N/A	
Lead Agency/Department Responsible:	County Planning Department, possibly working with VDEM and CRC	
Implementation Schedule:	N/A	
Status: <u>Remove</u> – inadequate staff resources		

Nottoway County Mitigation Action		Work with Virginia Department of Emergency Management to increase response capabilities and equipment required to acts of terrorism.
Category:	Emergency Services	
Hazard(s) Addressed:	Terrorism/Man-made	
Priority (High, Moderate, Low):	Moderate	
Estimated Cost:	Depends on what, if any, new equipment and training would be required	
Potential Funding Sources:	If cost intensive, County might seek grants	
Lead Agency/Department Responsible:	County Planning Department/VDEM	
Implementation Schedule:	N/A	
Status: <u>Remove</u> – inadequate staff resources		

Nottoway County Mitigation Action		Digitize tax, building footprint data.
Category:	Prevention	
Hazard(s) Addressed:	Multiple	
Priority (High, Moderate, Low):	High	
Estimated Cost:	Unknown at this time	
Potential Funding Sources:	County has planned to do this before with its own money	
Lead Agency/Department Responsible:	County Administration/Planning Department	
Implementation Schedule:	N/A	
Status: <u>Remove</u> – inadequate staff resources, lack of funding		

# (DRAFT)

Nottoway County Mitigation Action		Establish emergency response procedures in coordination with operators of critical facilities.
Category:	Emergency Services	
Hazard(s) Addressed:	Multiple	
Priority (High, Moderate, Low):	High	
Estimated Cost:	Minimal-planning	
Potential Funding Sources:	N/A	
Lead Agency/Department Responsible:	County Planning Department /Police/Local Sheriff/Fire/Rescue	
Implementation Schedule:	N/A	
Status: <u>Remove</u> – inadequate staff resources		

Nottoway County Mitigation Action		Purchase generators for critical facilities and emergency shelters.
Category:	Emergency Services	
Hazard(s) Addressed:	Multiple	
Priority (High, Moderate, Low):	High	
Estimated Cost:	Depends on number and type	
Potential Funding Sources:	County would probably seek grants	
Lead Agency/Department Responsible:	County Administration/Planning Department	
Implementation Schedule:	N/A	
Status: <u>Remove</u> – lack of funding		

Nottoway County Mitigation Action		Revise Emergency Operations Plan as necessary.
Category:	Emergency Services	
Hazard(s) Addressed:	Multiple	
Priority (High, Moderate, Low):	High	
Estimated Cost:	Minimal – planning	
Potential Funding Sources:	N/A	
Lead Agency/Department Responsible:	County Planning Department	
Implementation Schedule:	N/A	
Status: <u>Remove</u> – lack of staff resources		

# (DRAFT)

## Town of Blackstone

The Town of Blackstone chose to remove its one mitigation action from the original Plan, and added six (6) new actions. They are listed below.

New actions:

<b>Blackstone Mitigation Action 1</b>	<b>Update contact information for all Citizens in the Town of Blackstone, that require special attention and services when the electricity goes out</b>
<b>Category:</b>	Prevention/ Emergency Services
<b>Hazard(s) Addressed:</b>	Natural Disasters/Electrical Outage
<b>Priority (High, Moderate, Low):</b>	High
<b>Estimated Cost:</b>	Staff Resources, Advertising
<b>Potential Funding Sources:</b>	Town of Blackstone
<b>Lead Agency/Department Responsible:</b>	Town staff
<b>Implementation Schedule:</b>	Short/near term
<b>Status: Staffing is in place to complete</b>	

<b>Blackstone Mitigation Action 2</b>	<b>Establish a formal MOU between VUMAC, Heritage Hall, Clays Rest Home and the Town of Blackstone in regards to using the facility as a staging shelter during times of emergency</b>
<b>Category:</b>	Prevention/Emergency Services
<b>Hazard(s) Addressed:</b>	Natural Disasters/Multiple
<b>Priority (High, Moderate, Low):</b>	High/Moderate
<b>Estimated Cost:</b>	Staff Resources, Basic Supplies for Shelter
<b>Potential Funding Sources:</b>	Possible Grants
<b>Lead Agency/Department Responsible:</b>	Town staff
<b>Implementation Schedule:</b>	Short/near term
<b>Status: Staffing is in place to complete</b>	

<b>Blackstone Mitigation Action 3</b>	<b>Inspect and replace fire hydrants that are outdated or not working throughout the town on a regular basis</b>
<b>Category:</b>	Prevention/Emergency Services
<b>Hazard(s) Addressed:</b>	Fire Prevention
<b>Priority (High, Moderate, Low):</b>	High
<b>Estimated Cost:</b>	Labor, Cost of Supplies
<b>Potential Funding Sources:</b>	Town of Blackstone
<b>Lead Agency/Department Responsible:</b>	Town of Blackstone Water/Sewer Operator, BVFD
<b>Implementation Schedule:</b>	Short/near term
<b>Status: Staffing is in place to complete</b>	

# (DRAFT)

<b>Blackstone Mitigation Action 4</b>	<b>Continue to work with Nottoway, Crewe, and Burkeville on the Water Supply for Nottoway County</b>
Category:	Prevention
Hazard(s) Addressed:	Drought/ Contamination
Priority (High, Moderate, Low):	High
Estimated Cost:	Unknown at this time
Potential Funding Sources:	Grants if/when available
Lead Agency/Department Responsible:	County/town staffs will work together/apart depending on where impoundment is located
Implementation Schedule:	Short/near term (talks already underway)
<b>Status: Begin as soon as agreements can be reached</b>	

<b>Blackstone Mitigation Action 5</b>	<b>Devise a Fair Fire Inspection program for all Downtown buildings and businesses between Irving Street and Tavern Street</b>
Category:	Fire Prevention
Hazard(s) Addressed:	Fire
Priority (High, Moderate, Low):	Moderate
Estimated Cost:	Staff Resources, Inspection
Potential Funding Sources:	Town of Blackstone
Lead Agency/Department Responsible:	Town staff/BVFD
Implementation Schedule:	Short/near term
<b>Status: Expect to begin as soon as possible</b>	

<b>Blackstone Mitigation Action 6</b>	<b>Prohibit or limit floodplain development through regulatory and/or incentive-based measures.</b>
Category:	Prevention/Property Protection
Hazard(s) Addressed:	Flood
Priority (High, Moderate, Low):	Moderate
Estimated Cost:	None – would only involve changes to ordinances
Potential Funding Sources:	N/A
Lead Agency/Department Responsible:	Town staff
Implementation Schedule:	Short/near term
<b>Status: Ongoing – enforced through the Town's building ordinances.</b>	

# (DRAFT)

Action the Town chose to remove:

Blackstone Mitigation Action	Run its own power line to town's water and sewer plant.
Category:	Structural Projects
Hazard(s) Addressed:	Multiple
Priority (High, Moderate, Low):	High
Estimated Cost:	\$350,000
Potential Funding Sources:	Bonds, could also be funded by grants if available
Lead Agency/Department Responsible:	Town Utility/Southside Electric would build it
Implementation Schedule:	N/A
<b>Status: <u>Remove</u> – inadequate staff resources/lack of funding</b>	

## Town of Burkeville

The Town added two (2) new mitigation actions, as seen below.

Burkeville Mitigation Action 1	Replace and Upgrade Water Lines in the Town of Burkeville
Category:	Prevention
Hazard(s) Addressed:	Multiple
Priority (High, Moderate, Low):	Moderate/High
Estimated Cost:	Unknown/Working to Determine
Potential Funding Sources:	Grants/Local funding
Lead Agency/Department Responsible:	Town staff/Water Operator
Implementation Schedule:	Dependant on availability of funding
<b>Status: In development stage – staff in place – awaiting funding</b>	

Burkeville Mitigation Action 2	Prohibit or limit floodplain development through regulatory and/or incentive-based measures.
Category:	Prevention/Property Protection
Hazard(s) Addressed:	Flood
Priority (High, Moderate, Low):	Moderate
Estimated Cost:	None – would only involve changes to ordinances
Potential Funding Sources:	N/A
Lead Agency/Department Responsible:	Town staff
Implementation Schedule:	Short/near term
<b>Status: No action taken – Would require a change to Town ordinances</b>	

# **(DRAFT)**

The Town chose to remove one mitigation action, as listed below.

<b>Burkeville Mitigation Action</b>	<b>Purchase emergency generators for water tanks, Fire Department.</b>	
<b>Category:</b>	Emergency Services	
<b>Hazard(s) Addressed:</b>	Multiple	
<b>Priority (High, Moderate, Low):</b>	High	
<b>Estimated Cost:</b>	Depends on the size of the generator	
<b>Potential Funding Sources:</b>	Town would like to secure grant funding, if possible.	
<b>Lead Agency/Department Responsible:</b>	Town staff	
<b>Implementation Schedule:</b>	N/A	
<b>Status: <u>Remove</u> – insufficient staff resources/lack of funding</b>		

## Town of Crewe

<b>Crewe Mitigation Action 1</b>	<b>Encourage residents to keep storm drains clear of debris during storms.</b>	
<b>Category:</b>	Public Education and Awareness	
<b>Hazard(s) Addressed:</b>	Flood	
<b>Priority (High, Moderate, Low):</b>	High/Moderate	
<b>Estimated Cost:</b>	Minimal	
<b>Potential Funding Sources:</b>	N/A	
<b>Lead Agency/Department Responsible:</b>	Town staff (with possible assistance from VDEM, CRC)	
<b>Implementation Schedule:</b>	Short/near term, depending on availability of staff	
<b>Status: No action taken – lack of staff resources</b>		

<b>Crewe Mitigation Action 2</b>	<b>Ensure that adequate personnel/equipment are available to fight wildfires and structural fires.</b>	
<b>Category:</b>	Prevention	
<b>Hazard(s) Addressed:</b>	Fire	
<b>Priority (High, Moderate, Low):</b>	Moderate/High	
<b>Estimated Cost:</b>	Cost to train personnel, purchase equipment	
<b>Potential Funding Sources:</b>	N/A	
<b>Lead Agency/Department Responsible:</b>	Town staff (with possible assistance from VDEM, CRC)	
<b>Implementation Schedule:</b>	Dependant on availability of funding	
<b>Status: No action taken – awaiting funding</b>		

# **(DRAFT)**

The Town added three (3) new mitigation actions, as seen below.

<b>Crewe New Mitigation Action</b>	<b>Develop plan to better control storm water drainage and inflow into sewer lines that constantly cause flooding problems to the wastewater treatment plant.</b>
<b>Category:</b>	Prevention
<b>Hazard(s) Addressed:</b>	Flood
<b>Priority (High, Moderate, Low):</b>	High
<b>Estimated Cost:</b>	Planning plus any required construction
<b>Potential Funding Sources:</b>	Town would likely seek grant funding/low-interest loans
<b>Lead Agency/Department Responsible:</b>	Town staff/Utilities Department
<b>Implementation Schedule:</b>	Short term/dependant on availability of funding
<b>Status: Ongoing- awaiting funding</b>	

<b>Crewe New Mitigation Action</b>	<b>Provide Public Education and Awareness to Better Inform Citizens about Natural Hazards</b>
<b>Category:</b>	Prevention
<b>Hazard(s) Addressed:</b>	Multiple
<b>Priority (High, Moderate, Low):</b>	High
<b>Estimated Cost:</b>	Unknown at this Time
<b>Potential Funding Sources:</b>	Local, Grants, Planning Grants
<b>Lead Agency/Department Responsible:</b>	Town staff
<b>Implementation Schedule:</b>	Dependant on availability of funding
<b>Status: No action taken – awaiting funding</b>	

<b>Crewe New Mitigation Action</b>	<b>Prohibit or limit floodplain development through regulatory and/or incentive-based measures.</b>
<b>Category:</b>	Prevention/Property Protection
<b>Hazard(s) Addressed:</b>	Flood
<b>Priority (High, Moderate, Low):</b>	Moderate
<b>Estimated Cost:</b>	None – would only involve changes to ordinances
<b>Potential Funding Sources:</b>	N/A
<b>Lead Agency/Department Responsible:</b>	Town staff
<b>Implementation Schedule:</b>	Short/near term
<b>Status: No action taken – Would require a change to Town ordinances</b>	

# (DRAFT)

The Town of Crewe chose to remove a number of mitigation actions, as listed below. Since the development of the original Plan, the Town has looked at priorities and available staff/financial resources and decided some actions were not feasible at this time.

<b>Crewe Mitigation Action</b>	<b>Set up “command post” for people to contact with questions in the event of a disaster.</b>
<b>Category:</b>	Emergency Services
<b>Hazard(s) Addressed:</b>	Multiple
<b>Priority (High, Moderate, Low):</b>	High
<b>Estimated Cost:</b>	Depends on what is involved (i.e. simple designation of existing facility versus new facility)
<b>Potential Funding Sources:</b>	If something with big cost, would want to seek grant funding
<b>Lead Agency/Department Responsible:</b>	Town Office or Police/Fire Department/Rescue Squad
<b>Implementation Schedule:</b>	N/A
<b>Status: <u>Remove</u> – insufficient staff resources</b>	

<b>Crewe Mitigation Action</b>	<b>Purchase emergency generators for critical facilities and shelters.</b>
<b>Category:</b>	Prevention
<b>Hazard(s) Addressed:</b>	Multiple
<b>Priority (High, Moderate, Low):</b>	Moderate/High
<b>Estimated Cost:</b>	Depends on size and how many
<b>Potential Funding Sources:</b>	Grants, if possible
<b>Lead Agency/Department Responsible:</b>	Town Office or Police/Fire Department/Rescue Squad
<b>Implementation Schedule:</b>	N/A
<b>Status: <u>Remove</u> – insufficient staff resources/lack of funding</b>	

# (DRAFT)

Crewe Mitigation Action	Establish emergency response procedures in coordination with operators of critical facilities.
Category:	Emergency Services
Hazard(s) Addressed:	Multiple
Priority (High, Moderate, Low):	High
Estimated Cost:	N/A – Could be simple planning matter
Potential Funding Sources:	N/A
Lead Agency/Department Responsible:	Town Office/Police/Fire/Rescue
Implementation Schedule:	N/A
Status: <u>Remove</u> – insufficient staff resources	

Crewe Mitigation Action	Develop post-disaster reconstruction plan, to facilitate decision making after an event.
Category:	Emergency Services
Hazard(s) Addressed:	Multiple
Priority (High, Moderate, Low):	High
Estimated Cost:	N/A – Could be planning process
Potential Funding Sources:	N/A
Lead Agency/Department Responsible:	Town Office/Police/Fire/Rescue Squad
Implementation Schedule:	N/A
Status: <u>Remove</u> – insufficient staff resources	

Crewe Mitigation Action	Acquire safe sites for public facilities.
Category:	Prevention
Hazard(s) Addressed:	Multiple
Priority (High, Moderate, Low):	Moderate
Estimated Cost:	Would depend on the facility and how many
Potential Funding Sources:	Probably grants (if available)
Lead Agency/Department Responsible:	Town Office/Police/Fire/Rescue Squad
Implementation Schedule:	N/A
Status: <u>Remove</u> – lack of funding	

# (DRAFT)

<b>Crewe Mitigation Action</b>	<b>Provide advanced training for local building inspectors.</b>
Category:	Prevention
Hazard(s) Addressed:	Multiple
Priority (High, Moderate, Low):	Moderate/High
Estimated Cost:	Cost of training (probably minimal)
Potential Funding Sources:	If small cost, Town could pay for it (depending on how many people to train)
Lead Agency/Department Responsible:	Town Office
Implementation Schedule:	N/A
<b>Status: <u>Remove</u> – insufficient staff resources/lack of funding</b>	

<b>Crewe Mitigation Action</b>	<b>Develop debris management plan.</b>
Category:	Prevention
Hazard(s) Addressed:	Multiple
Priority (High, Moderate, Low):	Moderate/High
Estimated Cost:	Cost of planning – minimal Cost of implementation – probably minimal (done by Town workers)
Potential Funding Sources:	N/A
Lead Agency/Department Responsible:	Town Utilities Director
Implementation Schedule:	N/A
<b>Status: <u>Remove</u> – insufficient staff resources</b>	

<b>Crewe Mitigation Action</b>	<b>Designate emergency thoroughfares and update to necessary standards.</b>
Category:	Emergency Services
Hazard(s) Addressed:	Multiple
Priority (High, Moderate, Low):	Moderate/High
Estimated Cost:	Depends on exactly what needs to be done (i.e. is any construction involved?)
Potential Funding Sources:	Depends on cost and who pays the bill
Lead Agency/Department Responsible:	Town staff/VDOT
Implementation Schedule:	N/A
<b>Status: <u>Remove</u> – insufficient staff resources</b>	

# (DRAFT)

Crewe Mitigation Action		Require burial of power, phones and cable lines.
Category:	Prevention	
Hazard(s) Addressed:	Hurricane/Tornado/Wind	
Priority (High, Moderate, Low):	Moderate	
Estimated Cost:	Depends on how much line would be buried	
Potential Funding Sources:	Depends on how costs are split	
Lead Agency/Department Responsible:	Town staff and/or Sprint, Adelphia/Comcast, Southside Electric Coop	
Implementation Schedule:	N/A	
Status: <u>Remove</u> – insufficient staff resources		

Crewe Mitigation Action		Work with Virginia Department of Emergency Management to increase capabilities and equipment required to respond to acts of terrorism.
Category:	Emergency Services	
Hazard(s) Addressed:	Terrorism/Man-made	
Priority (High, Moderate, Low):	Moderate	
Estimated Cost:	Probably minimal, but depends on whether new training/equipment required	
Potential Funding Sources:	If new equipment, probably combination of grants and Fire/Rescue funds	
Lead Agency/Department Responsible:	Town Office/VDEM	
Implementation Schedule:	N/A	
Status: <u>Remove</u> – insufficient staff resources		

Crewe Mitigation Action		Develop terrorism response plan.
Category:	Emergency Services	
Hazard(s) Addressed:	Terrorism/Man-made	
Priority (High, Moderate, Low):	High/Moderate	
Estimated Cost:	Minimal – planning project	
Potential Funding Sources:	N/A	
Lead Agency/Department Responsible:	Town Office/Police/Fire/Rescue Squad	
Implementation Schedule:	N/A	
Status: <u>Remove</u> – insufficient staff resources		

# (DRAFT)

Crewe Mitigation Action	Increase capacity of storm water detention/retention basins.
Category:	Prevention
Hazard(s) Addressed:	Flood
Priority (High, Moderate, Low):	Moderate
Estimated Cost:	Unknown at this time
Potential Funding Sources:	Depends on cost
Lead Agency/Department Responsible:	Town staff/Town Utilities Operator
Implementation Schedule:	N/A
Status: <u>Remove</u> – insufficient staff resources/lack of funding	

Crewe Mitigation Action	Increase dimensions of drainage culverts in troublesome areas.
Category:	Prevention
Hazard(s) Addressed:	Flood
Priority (High, Moderate, Low):	Moderate
Estimated Cost:	Depends on the amount of work
Potential Funding Sources:	If cost-intensive, could be a combination of available funds and grants
Lead Agency/Department Responsible:	Town Utilities Operator
Implementation Schedule:	N/A
Status: <u>Remove</u> – insufficient staff resources/lack of funding	

Crewe Mitigation Action	Flood proof sewage treatment plant in flood hazard area.
Category:	Prevention
Hazard(s) Addressed:	Flood
Priority (High, Moderate, Low):	Moderate
Estimated Cost:	Depends on the amount of work
Potential Funding Sources:	If cost-intensive, could be a combination of available funds and grants
Lead Agency/Department Responsible:	Town Utilities Operator
Implementation Schedule:	N/A
Status: <u>Remove</u> – insufficient staff resources/lack of funding	

# (DRAFT)

<b>Crewe Mitigation Action</b>	<b>Encourage homeowners to install backflow valves to prevent reverse flow floods.</b>
Category:	Prevention
Hazard(s) Addressed:	Flood
Priority (High, Moderate, Low):	Moderate/High
Estimated Cost:	Depends on the amount of work to be done
Potential Funding Sources:	If cost-intensive, could be a combination of Town money and grant funds
Lead Agency/Department Responsible:	Town Utilities Operator
Implementation Schedule:	N/A
<b>Status: <u>Remove</u> – insufficient staff resources/lack of funding</b>	

<b>Crewe Mitigation Action</b>	<b>Require fire extinguishers for all multi-family dwelling units.</b>
Category:	Prevention
Hazard(s) Addressed:	Flood
Priority (High, Moderate, Low):	Moderate/High
Estimated Cost:	Should be minimal
Potential Funding Sources:	N/A
Lead Agency/Department Responsible:	Town Office or Utilities Operator (CRC might be able to assist)
Implementation Schedule:	N/A
<b>Status: <u>Remove</u> – insufficient staff resources</b>	

<b>Crewe Mitigation Action</b>	<b>Ensure that local firefighters become properly trained and exercised in brush/forest firefighting techniques.</b>
Category:	Emergency Services
Hazard(s) Addressed:	Fire
Priority (High, Moderate, Low):	High/Moderate
Estimated Cost:	Depends on how much training/equipment would be required
Potential Funding Sources:	If new training, equipment needed, Town might seek grant funding to help with costs
Lead Agency/Department Responsible:	Town Office/Fire Department
Implementation Schedule:	N/A
<b>Status: <u>Remove</u> – insufficient staff resources/lack of funding</b>	

# (DRAFT)

<b>Crewe Mitigation Action</b>	<b>Require and maintain safe access for fire equipment to wildland/urban interface neighborhoods/properties.</b>
<b>Category:</b>	Emergency Services
<b>Hazard(s) Addressed:</b>	Fire
<b>Priority (High, Moderate, Low):</b>	High/Moderate
<b>Estimated Cost:</b>	Cost of training (probably minimal, but depends on scope of training and how many to train)
<b>Potential Funding Sources:</b>	If cost-intensive, could be a combination of Town funds and grants
<b>Lead Agency/Department Responsible:</b>	Fire Department
<b>Implementation Schedule:</b>	N/A
<b>Status: <u>Remove</u> – insufficient staff resources/lack of funding</b>	

<b>Crewe Mitigation Action</b>	<b>Routinely inspect the functioning of fire hydrants.</b>
<b>Category:</b>	Emergency Services/Prevention
<b>Hazard(s) Addressed:</b>	Fire
<b>Priority (High, Moderate, Low):</b>	High/Moderate
<b>Estimated Cost:</b>	Minimal – Requirement could be as simple as change to Town ordinances – Maintenance could be done by Town Public Works (cost probably minimal)
<b>Potential Funding Sources:</b>	N/A
<b>Lead Agency/Department Responsible:</b>	Town Utilities Operator/Fire Department, possibly in conjunction with state agencies
<b>Implementation Schedule:</b>	N/A
<b><u>Remove</u> – insufficient staff resources</b>	

# **(DRAFT)**

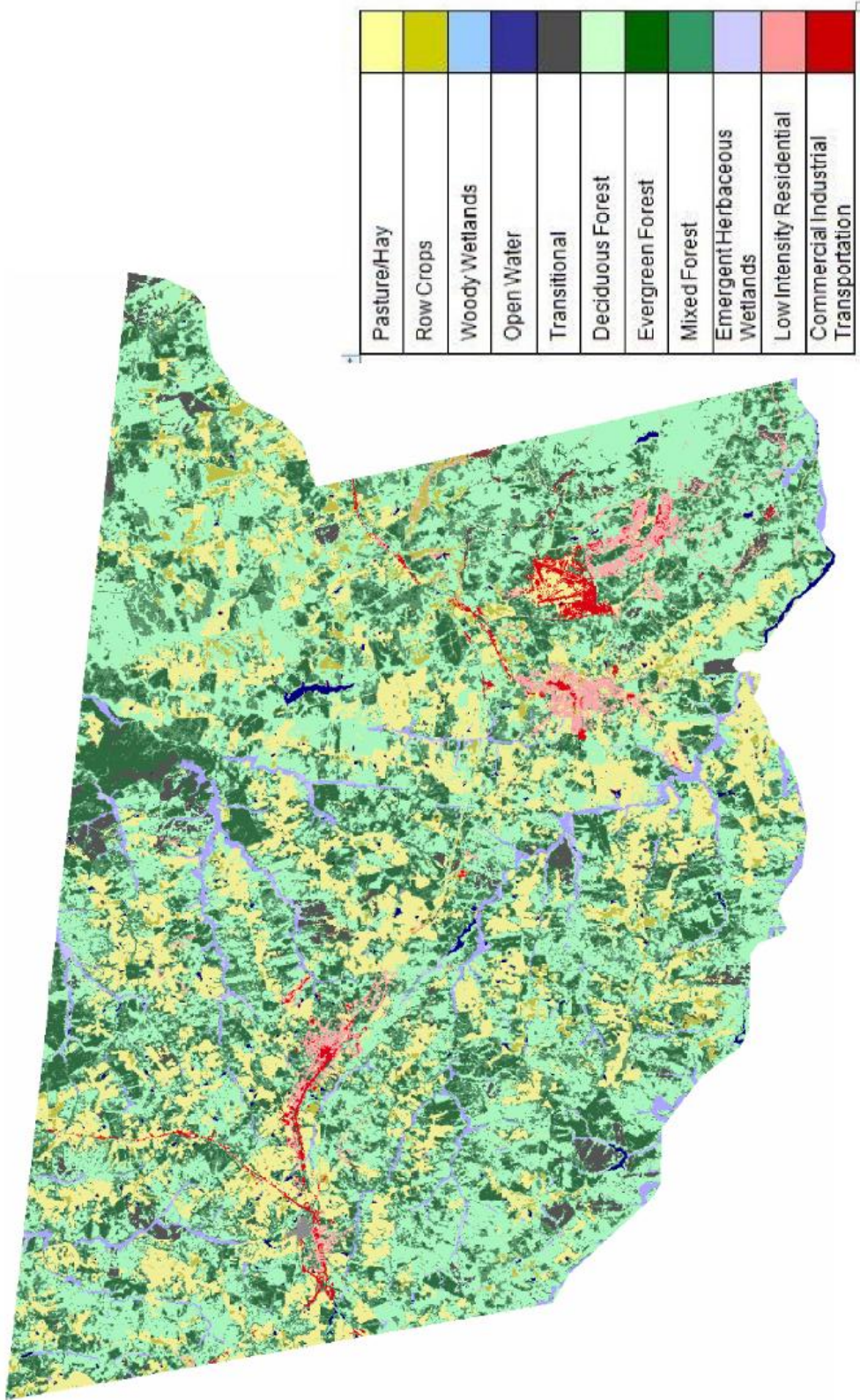
## **Building Permit Data – Nottoway County**

Year	Residential Permits Issued	Commercial Permits Issued
1995	91	9
1996	100	13
1997	91	11
1998	96	11
1999	114	17
2000	81	10
2001	83	15
2002	92	5
2003	70	3
2004	91	3
2005	96	7
2006	82	3
2007	69	2
2008	93	3
2009	60	1

NOTE: Building permits for the Towns of Blackstone, Burkeville, and Crewe are handled through the Nottoway County Building Inspector's Office.

**(DRAFT)**

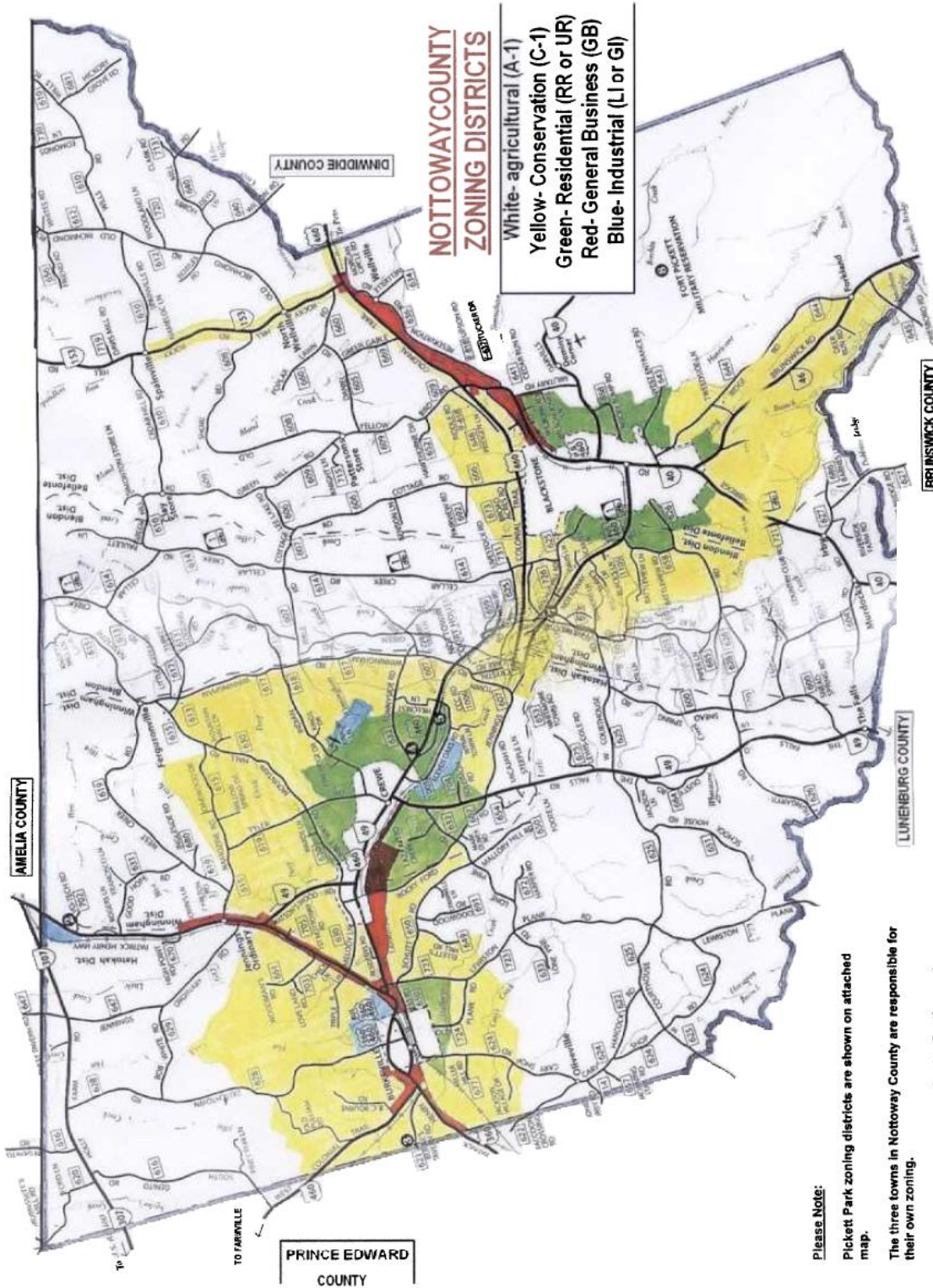
**Nottoway County Land Use Cover Map**



Created by CRC - August 2010  
Source: National Land Cover Dataset, UVA Geostat Center

(DRAFT)

Nottoway County Future Land Use Map

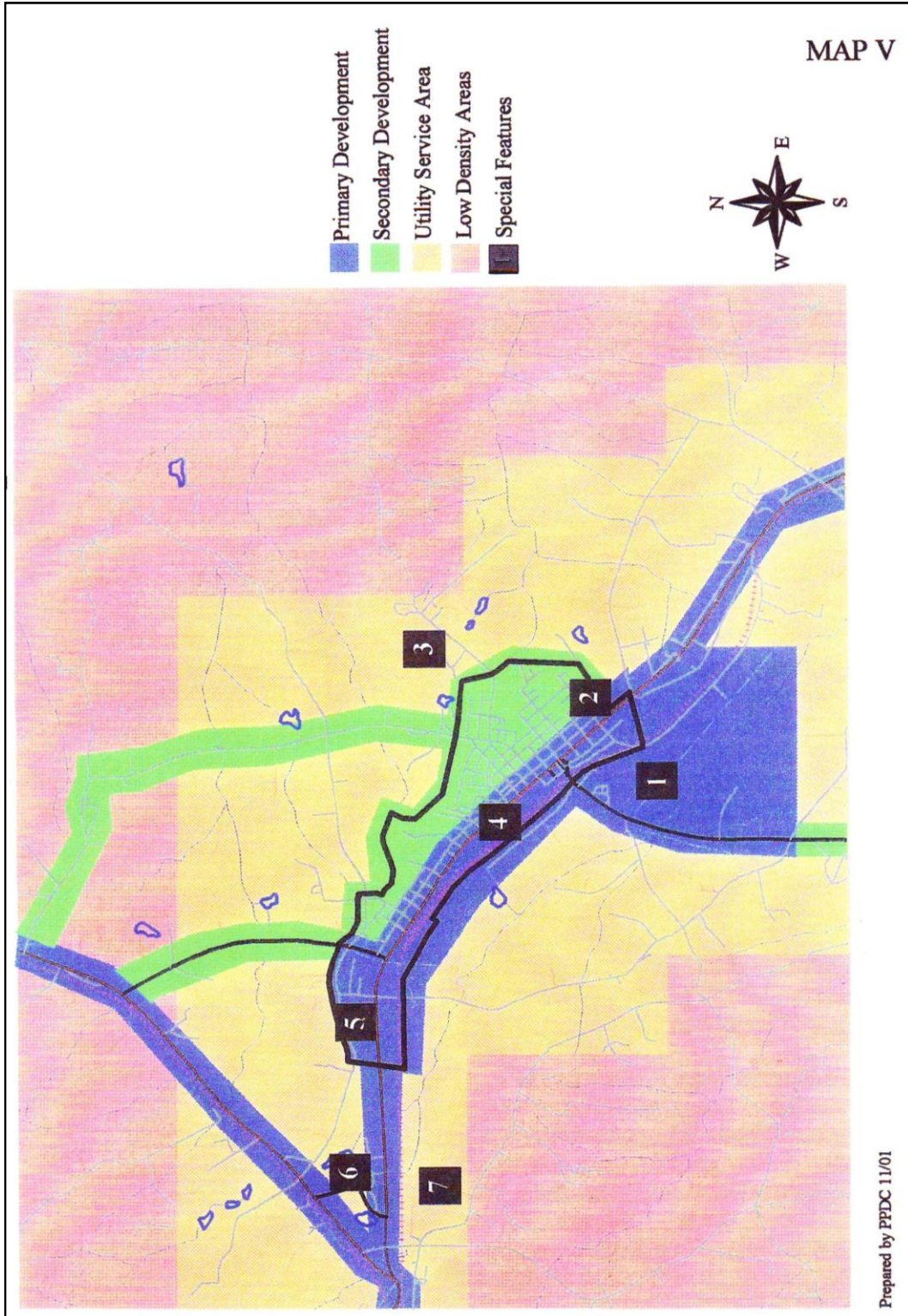


**Please Note:**  
Pickett Park zoning districts are shown on attached map.  
The three towns in Nottoway County are responsible for their own zoning.  
Lines on this map are approximate. For the most precise delineation of zoning districts, please visit the County Administrator's Office at Nottoway, Virginia.

Source: Nottoway County Planning

**(DRAFT)**

**Town of Crewe Future Land Use Map**

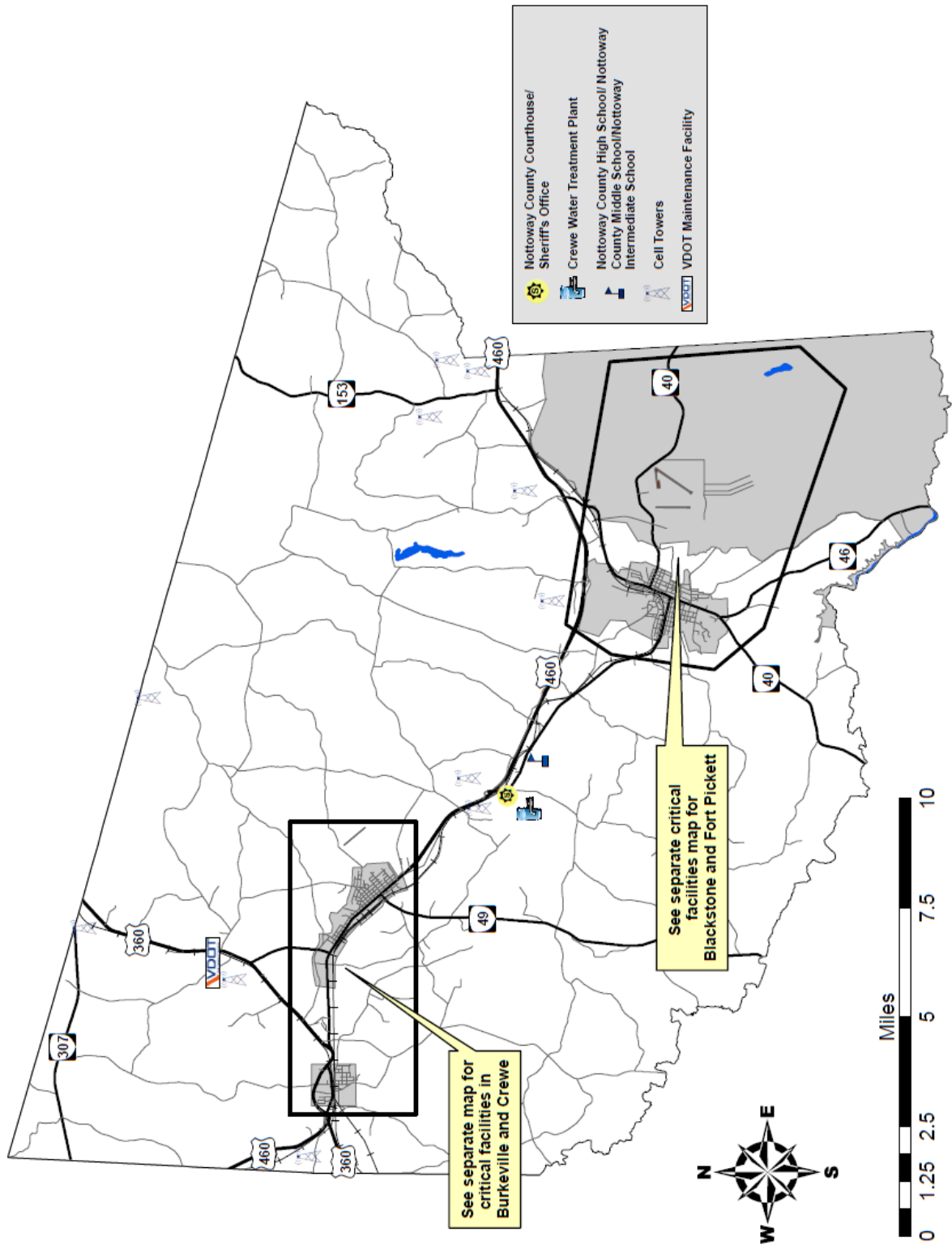


Map prepared by CRC – November 2001 (source: Crewe Comprehensive Plan)

NOTE: Crewe is the only Town in Nottoway County for which the CRC has a future land use map at this time.

**(DRAFT)**

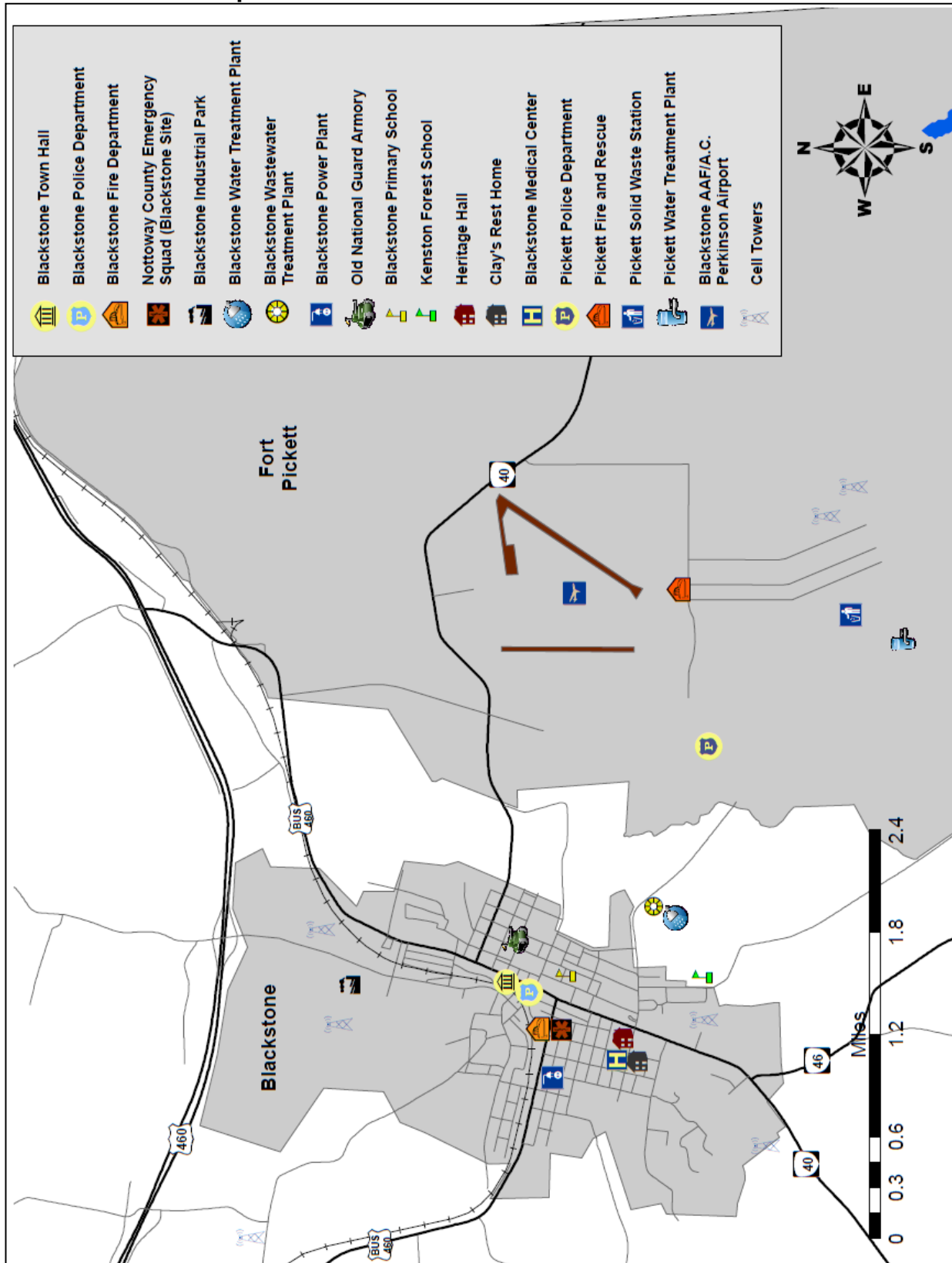
**Nottoway County Critical Facilities Map**



Map created by CRC – February 2011 (source: Nottoway County)

(DRAFT)

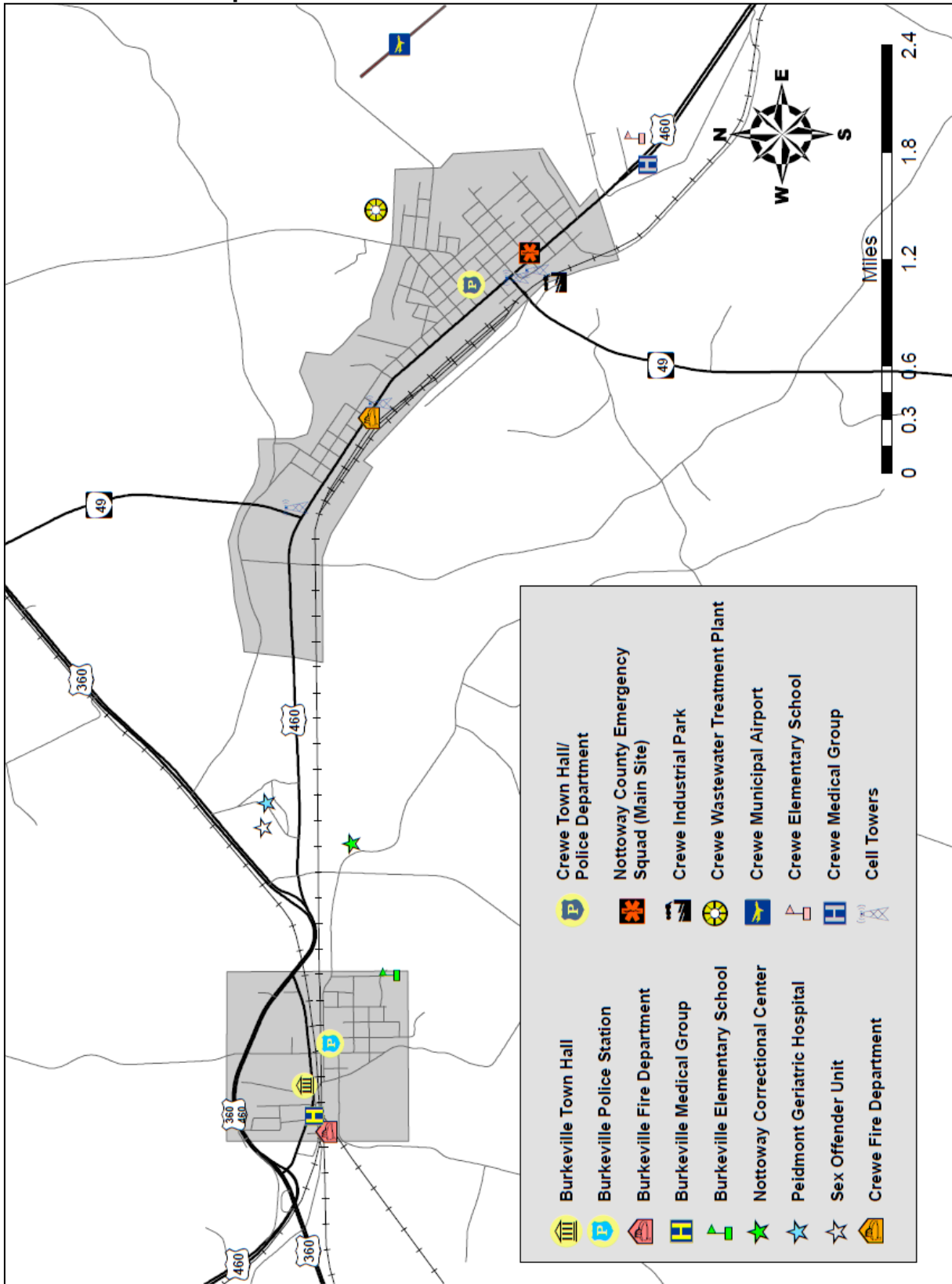
Critical Facilities Map – Blackstone/Fort Pickett Area



Map created by CRC – February 2011 (source: Nottoway County)

**(DRAFT)**

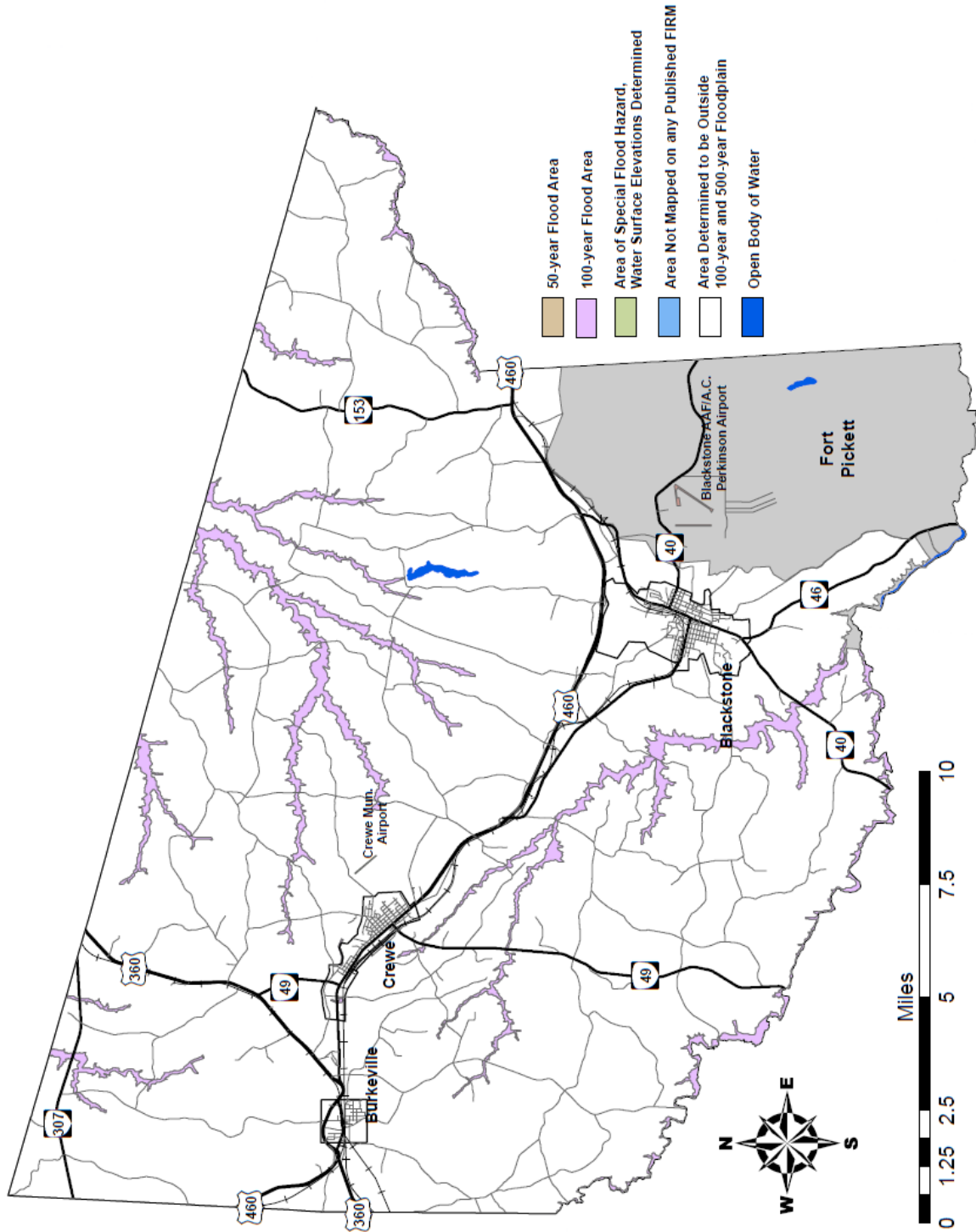
**Critical Facilities Map – Burkeville/Crewe Area**



Map created by CRC – February 2011 (source: Nottoway County)

**(DRAFT)**

**Nottoway County Flood Zone Map**



Map created by CRC – February 2011 (source: FEMA)