

**(DRAFT)**

**APPENDIX G – PRINCE EDWARD COUNTY**

Hazard Rankings

Status of Mitigation Actions

Building Permit Data

Land Use Cover Map

Future Land Use Map

Critical Facilities Map

Flood Zone Map

# **(DRAFT)**

## **Hazard Rankings – Pr. Edward Co. (From Qualitative Assessment and Local Input)**

Hazard	Likelihood	Spatial Extent	Potential Impact	HAZARD RATING
Hurricanes and Tropical Storms	2	3	3	<b>8</b>
Drought	2	3	2	<b>7</b>
Severe Thunderstorms and Tornadoes	3	2	2	<b>7</b>
Winter Storms	2	3	2	<b>7</b>
Flood	3	2	1	<b>6</b>
Dam/Levee Failure	1	2	3	<b>6</b>
Erosion	1	1	1	<b>3</b>
Wildfire	1	1	1	<b>3</b>
Earthquakes	1	1	1	<b>3</b>
Landslides	0	1	1	<b>2</b>
Sinkholes	0	1	1	<b>2</b>

Hazard rankings are based on a qualitative assessment, as described below. The values assigned for each option chosen are added together for each hazard to arrive at a total score.

	Assigned Value	Definition
<b>Likelihood of Occurrence</b>		
Highly Likely	3	Near 100% annual probability
Likely	2	Between 10 and 100% annual probability
Possible	1	Between 1 and 10% annual probability
Unlikely	0	Less than 1% annual probability
<b>Spatial Extent</b>		
Large	3	More than 50% of area affected
Moderate	2	Between 10 and 50% of area affected
Small	1	Less than 10% of area affected
<b>Potential Impact</b>		
Catastrophic	4	High number of deaths/injuries possible. More than 50% of property in affected area damaged or destroyed. Complete shutdown of facilities for 30 days or more.
Critical	3	Multiple deaths/injuries possible. More than 25% of property in affected area damaged or destroyed. Complete shutdown of facilities for more than one week.
Limited	2	Minor injuries only. More than 10% of property in affected area damaged or destroyed. Complete shutdown of facilities for more than one day.
Minor	1	Very few injuries, if any. Only minor property damage and minimal disruption on quality of life. Temporary shutdown of facilities.

# **(DRAFT)**

## Detailed Information/Status of Local Mitigation Actions (includes detailed data for each action, as requested by FEMA)

<b>Prince Edward County Mitigation Action 1</b>	<b>Purchase generator (30kw) for Prince Edward County Middle School which serves as an emergency shelter.</b>	
<b>Category:</b>	Emergency Services	
<b>Hazard(s) Addressed:</b>	Multiple	
<b>Priority (High, Moderate, Low):</b>	High/Moderate	
<b>Estimated Cost:</b>	\$15,000	
<b>Potential Funding Sources:</b>	County, with help from grant funds	
<b>Lead Agency/Department Responsible:</b>	Prince Edward County Administrator's Office	
<b>Implementation Schedule:</b>	Dependant on availability of funding	
<b>Status: Completed. Generator purchased in 2009 using DHS grant funds.</b>		

<b>Prince Edward County Mitigation Action 2</b>	<b>Digitize tax maps and implement GIS.</b>	
<b>Category:</b>	Prevention	
<b>Hazard(s) Addressed:</b>	Multiple	
<b>Priority (High, Moderate, Low):</b>	Moderate/High	
<b>Estimated Cost:</b>	\$60,000	
<b>Potential Funding Sources:</b>	Would likely seek grant funding	
<b>Lead Agency/Department Responsible:</b>	Prince Edward County Administrator's Office	
<b>Implementation Schedule:</b>	Dependant on availability of funding	
<b>Status: County received grant from VITA in 2009 for this activity. Project ongoing.</b>		

Prince Edward County added one (1) mitigation action, as seen below.

<b>Prince Edward County New Mitigation Action</b>	<b>Prohibit or limit floodplain development through regulatory and/or incentive-based measures.</b>	
<b>Category:</b>	Prevention/Property Protection	
<b>Hazard(s) Addressed:</b>	Flood	
<b>Priority (High, Moderate, Low):</b>	Moderate	
<b>Estimated Cost:</b>	None – would only involve changes to ordinances	
<b>Potential Funding Sources:</b>	N/A	
<b>Lead Agency/Department Responsible:</b>	County Planning Department, Building Inspector	
<b>Implementation Schedule:</b>	Short/near term	
<b>Status: Ongoing – enforced through County ordinances</b>		

# **(DRAFT)**

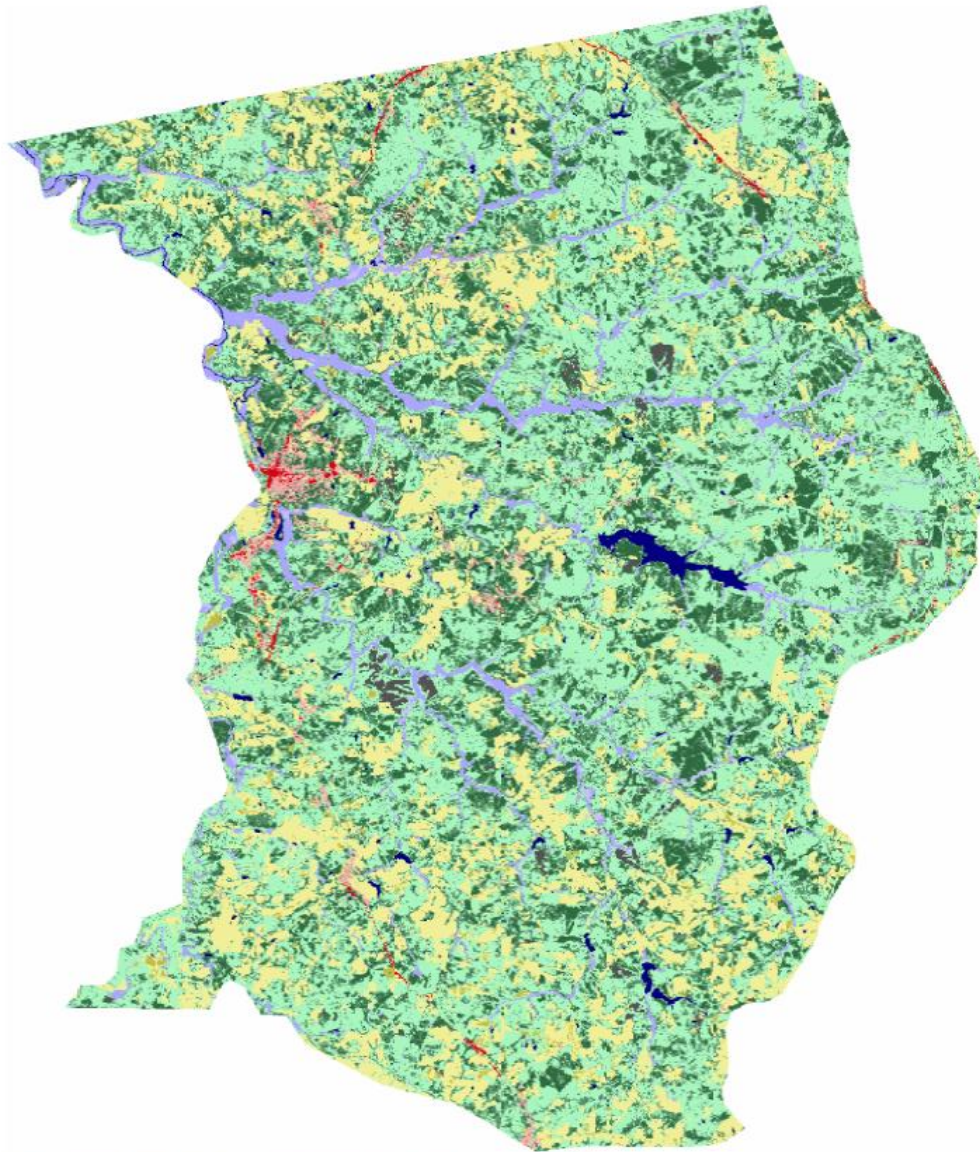
## **Building Permit Data – Prince Edward County**

Year	Residential Permits Issued	Commercial Permits Issued
1997	188	6
1998	202	4
1999	195	9
2000	178	17
2001	148	7
2002	182	11
2003	147	7
2004	158	9
2005	164	16
2006	187	16
2007	161	9
2008	126	3
2009	97	5

NOTE: These numbers do NOT include the Town of Farmville. The Town handles its own building permits.

**(DRAFT)**

**Prince Edward County Land Use Cover Map**



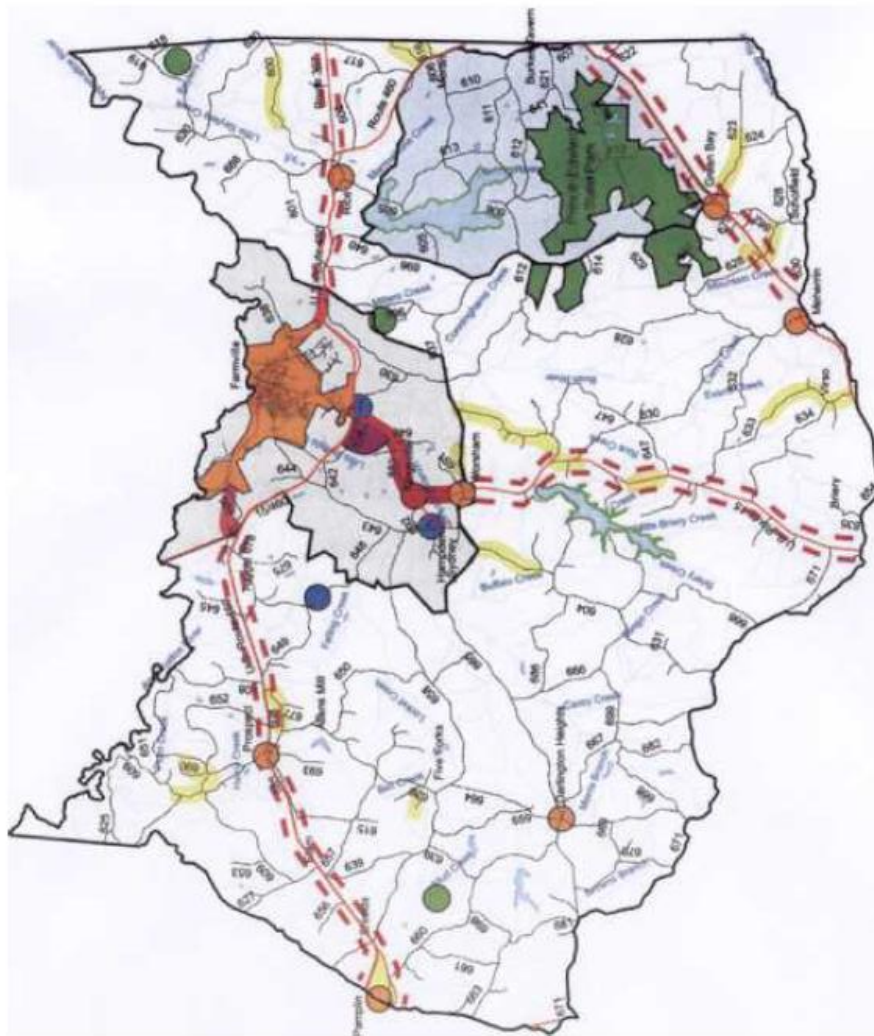
Pasture/Hay	Yellow
Row Crops	Light Green
Woody Wetlands	Light Blue
Open Water	Dark Blue
Transitional	Dark Grey
Deciduous Forest	Light Green
Evergreen Forest	Dark Green
Mixed Forest	Medium Green
Emergent Herbaceous Wetlands	Light Purple
Low Intensity Residential	Light Red
Commercial Industrial Transportation	Dark Red

Created by CRC - August 2010  
Source: National Land Cover Dataset, UVA Geostat Center

(DRAFT)

# Prince Edward County Future Land Use Map

- LEGEND**
- PROPOSED SANDY RIVER WATERSHED OVERLAY DISTRICT
  - DEVELOPMENT
  - COMMERCIAL
  - PUBLIC/INSTITUTIONAL
  - INDUSTRIAL
  - PARKS/CONSERVATION
  - AGRICULTURAL/FORESTAL
  - VILLAGE CENTERS
  - RURAL RESIDENTIAL
  - SPECIAL POLICY AREAS



MarshWitt Associates, P.C.



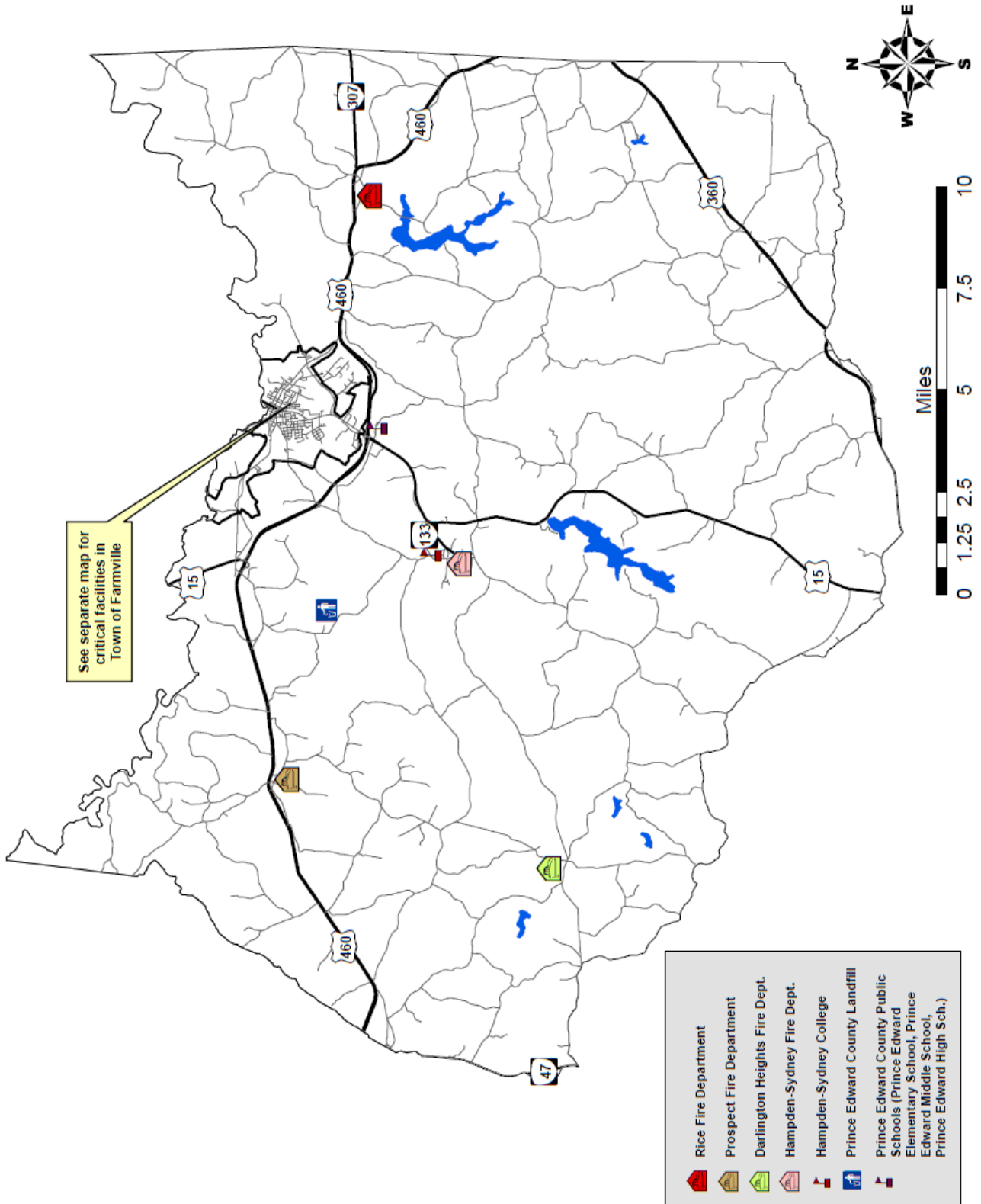
MILES

Source: Various

Source: Prince Edward County Comprehensive Plan

**(DRAFT)**

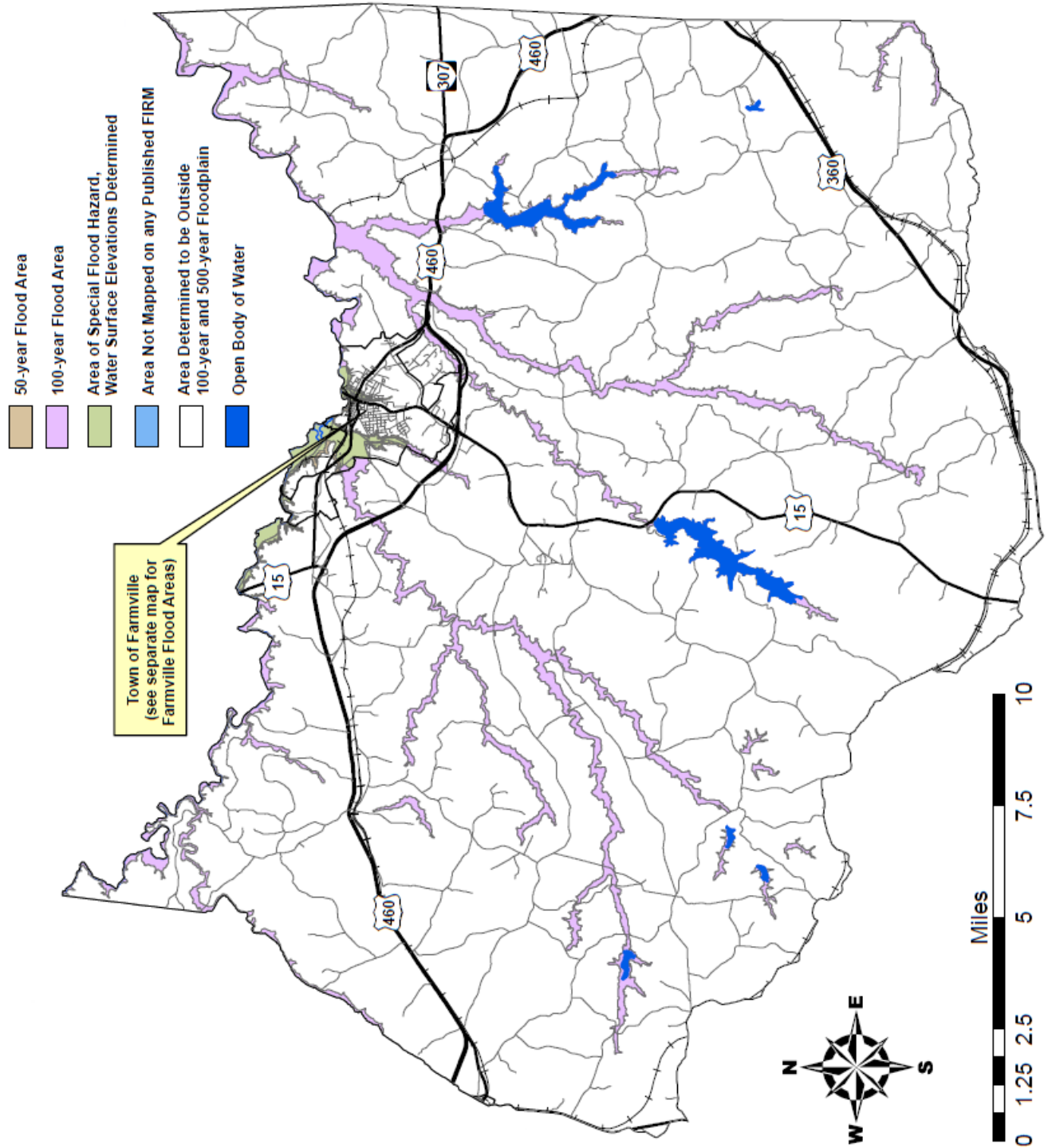
**Prince Edward County Critical Facilities Map**



Map created by CRC – February 2011 (Source: Prince Edward County)

**(DRAFT)**

**Prince Edward County Flood Zone Map**



Map created by CRC – February 2011 (Source: FEMA)