

APPENDIX B – BUCKINGHAM COUNTY, TOWN OF DILLWYN

Locality Map

Hazard Rankings

Status of Mitigation Actions

Building Permit Data

Land Use Cover Map

Future Land Use Maps

Critical Facilities Maps

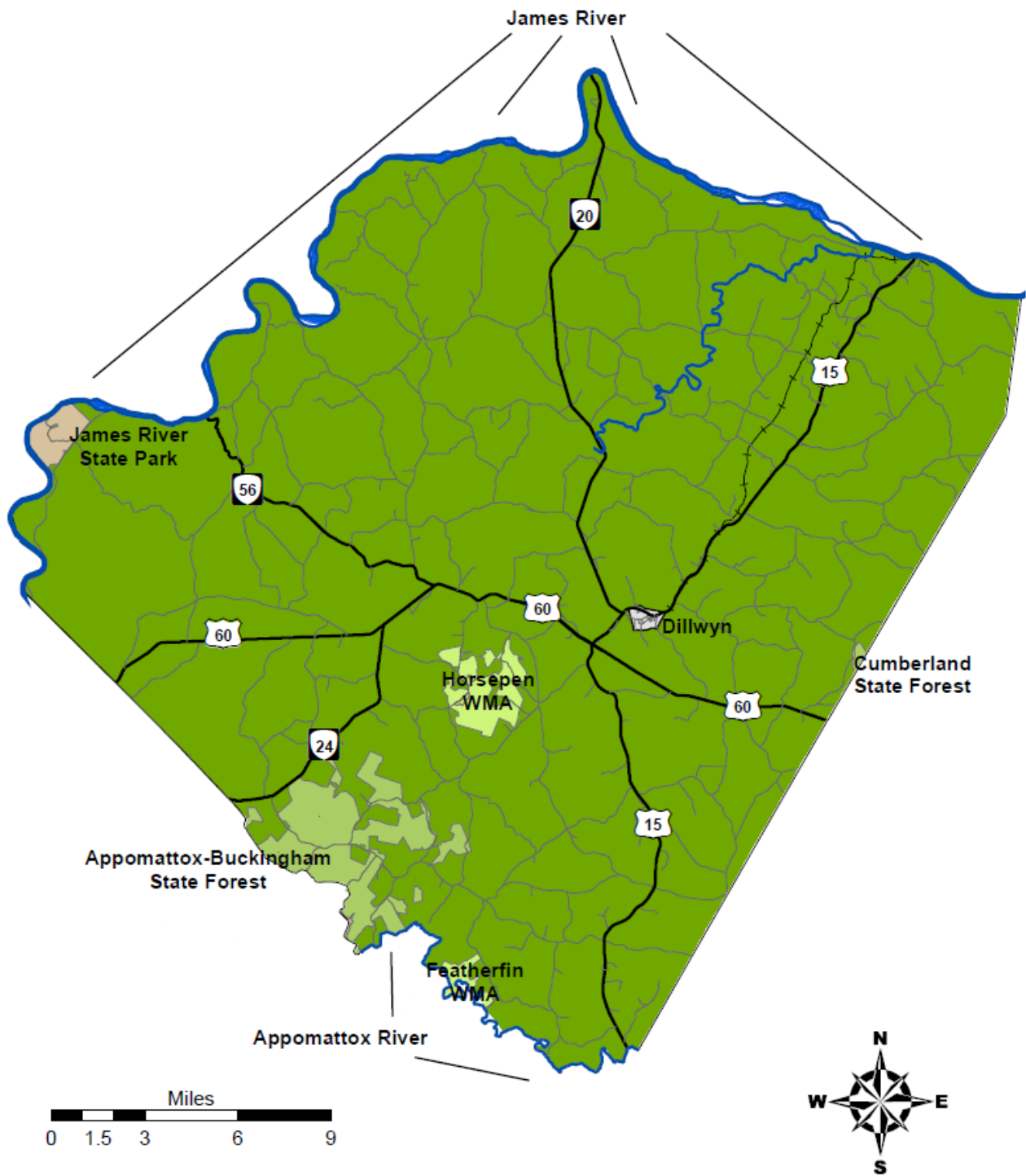
NFIP Survey Results

Flood Zone Map

NOTES:

- 1) For this update, the methodology for ranking hazards was changed. Localities were not actually tasked with scoring/ranking covered hazards directly. Table 6.17 in Section 6 of the Plan shows the risk ratings for the region based on quantitative and qualitative analysis as well as anecdotal input from the Project Management Team, but is not based on a locality ranking system. As a result, the "Hazard Ranking" table that appeared in the local appendices for the previous Plan updates has been supplanted by the "Hazard Risk Ratings" table (Table 6.17) in Section 6.
- 2) For the status of mitigation actions, any actions that were removed per previous Plan updates are not shown in this update. This section was also amended to list actions completed per prior Plan updates separately.

Buckingham County



Map created by CRC – May 2010

Detailed Information/Status of Local Mitigation Actions
(includes detailed data for each action, as requested by FEMA)

Buckingham County

Buckingham County Mitigation Action 1	Install quick-connect generators for hook-ups for critical facilities.	
Category:	Prevention/Emergency Services	
Hazard(s) Addressed:	Multiple	
Priority (High, Moderate, Low):	High	
Estimated Cost:	Depends on how many	
Potential Funding Sources:	BRIC, HMGP (with local matching funds)	
Lead Agency/Department Responsible:	County Emergency Services (E-911 Coordinator)	
Implementation Schedule:	Dependant on availability of funding	
Status: No action taken – awaiting funds		

Buckingham County Mitigation Action 2	Purchase generators for critical facilities and shelters (for emergency power).	
Category:	Prevention/Emergency Services	
Hazard(s) Addressed:	Multiple	
Priority (High, Moderate, Low):	High	
Estimated Cost:	Depends on size and number	
Potential Funding Sources:	BRIC, HMGP (with local matching funds), VDEM, USDA RD equipment grants	
Lead Agency/Department Responsible:	County Emergency Services (E-911 Coordinator)	
Implementation Schedule:	Dependant on availability of funding	
Status: No action taken – awaiting funds		

Buckingham County Mitigation Action 3	Routinely inspect functioning of fire hydrants.	
Category:	Property Protection/Emergency Services	
Hazard(s) Addressed:	Fire	
Priority (High, Moderate, Low):	High/Moderate	
Estimated Cost:	Minimal if done by county or local fire departments	
Potential Funding Sources:	Could be made part of routine job responsibilities	
Lead Agency/Department Responsible:	County Emergency Services (E-911 Coordinator)	
Implementation Schedule:	Short term (if little or no cost)	
Status: Ongoing. The County does this on a yearly basis.		

Buckingham County Mitigation Action 4	Review all permits for new development and substantial improvements for compliance with the County’s floodplain ordinance.	
Category:	Prevention/Property Protection	
Hazard(s) Addressed:	Flood	
Priority (High, Moderate, Low):	Moderate	
Estimated Cost:	None	
Potential Funding Sources:	N/A	
Lead Agency/Department Responsible:	County Planning Department	
Implementation Schedule:	Short/near term	
Status: Ongoing – enforced through the County’s Floodplain Ordinance.		

Buckingham County Mitigation Action 5	Address flooding issues in Little Georgia Creek Subdivision (located in northern Buckingham County) through modifications to creek to minimize flooding, construction of additional road to provide secondary access route for residents in the area, or other means	
Category:	Prevention/Property Protection	
Hazard(s) Addressed:	Flood	
Priority (High, Moderate, Low):	Moderate	
Estimated Cost:	Depends on project, could be \$500,000 to \$1 million or more	
Potential Funding Sources:	VDOT Six-Year Program, Army Corps of Engineers funding, FMA, BRIC, HMGP	
Lead Agency/Department Responsible:	County Planning Department	
Implementation Schedule:	Dependant on availability of funding	
Status: No action taken – awaiting funds		

Town of Dillwyn

Dillwyn Mitigation Action 1	Develop a canned public awareness campaign for use in times of high fire danger.	
Category:	Public Education and Awareness	
Hazard(s) Addressed:	Wildfire	
Priority (High, Moderate, Low):	High	
Estimated Cost:	Minimal cost of brochures/presentations	
Potential Funding Sources:	N/A	
Lead Agency/Department Responsible:	County Planning Department, possibly in conjunction with VDOF/CRC	
Implementation Schedule:	Short/Near term	
Status: No action taken – lack of staff resources		

Dillwyn Mitigation Action 2	Routinely clean and repair storm water drains.
Category:	Prevention
Hazard(s) Addressed:	Flood
Priority (High, Moderate, Low):	High
Estimated Cost:	N/A – Could be added to routine maintenance
Potential Funding Sources:	N/A
Lead Agency/Department Responsible:	VDOT
Implementation Schedule:	Short term
Status: No action taken – lack of funding/staff resources	

Dillwyn Mitigation Action 3	Encourage homeowners to install backflow valves to prevent reverse-flow floods.
Category:	Prevention/Public Education
Hazard(s) Addressed:	Flood
Priority (High, Moderate, Low):	High/Moderate
Estimated Cost:	Minimal – Could be amendment to ordinances or public education program
Potential Funding Sources:	N/A
Lead Agency/Department Responsible:	County Building Inspector
Implementation Schedule:	Short term
Status: No action taken – lack of staff resources	

Dillwyn Mitigation Action 4	Establish emergency response procedures in coordination with operators of critical facilities.
Category:	Emergency Services
Hazard(s) Addressed:	Multiple
Priority (High, Moderate, Low):	High
Estimated Cost:	Depends on amount of planning
Potential Funding Sources:	Depends on cost
Lead Agency/Department Responsible:	County Emergency Services/operators of critical facilities (with support from town)
Implementation Schedule:	Short/near term
Status: No action taken – lack of staff resources	

Dillwyn Mitigation Action 5	Install quick-connect emergency generator hook-ups for critical facilities.	
Category:	Emergency Services	
Hazard(s) Addressed:	Multiple	
Priority (High, Moderate, Low):	High	
Estimated Cost:	Depends on how many needed	
Potential Funding Sources:	BRIC, HMGP (with local matching funds), USDA RD equipment grants	
Lead Agency/Department Responsible:	County Emergency Services (E-911 Coordinator)	
Implementation Schedule:	Dependant on availability of funding	
Status: No action taken – awaiting funds		

Dillwyn Mitigation Action 6	Install storm water drainage system to prevent flooding in buildings on Main Street	
Category:	Prevention/Property Protection	
Hazard(s) Addressed:	Flood	
Priority (High, Moderate, Low):	High	
Estimated Cost:	Approx. \$250,000	
Potential Funding Sources:	BRIC, HMGP, FMA (with local matching funds), USDA RD	
Lead Agency/Department Responsible:	Town staff	
Implementation Schedule:	Dependant on availability of funding	
Status: Pending. Grant application previously submitted, but withdrawn due to lack of matching funds; Town to re-evaluate feasibility.		

Dillwyn Mitigation Action 7	Review all permits for new development and substantial improvements for compliance with the Town’s ordinances as they relate to flood areas.	
Category:	Prevention/Property Protection	
Hazard(s) Addressed:	Flood	
Priority (High, Moderate, Low):	Moderate	
Estimated Cost:	None	
Potential Funding Sources:	N/A	
Lead Agency/Department Responsible:	Town staff	
Implementation Schedule:	Short/near term	
Status: Ongoing – Town ordinances restrict building/development within areas subject to flooding.		

NOTE: Buckingham County and the Town of Dillwyn have determined that acquisition, relocation, elevation, or floodproofing is not a priority for them, due to the lack of flooding issues in those localities. Consequently, they do not have a mitigation strategy addressing this.

Mitigation actions completed per previous Plan updates:
Buckingham County

- Identify and strengthen facilities to function as public shelters – Completed during the 2012 Plan update.

Town of Dillwyn

- Develop or update water management/emergency response plan – Completed per the 2018 Plan update.

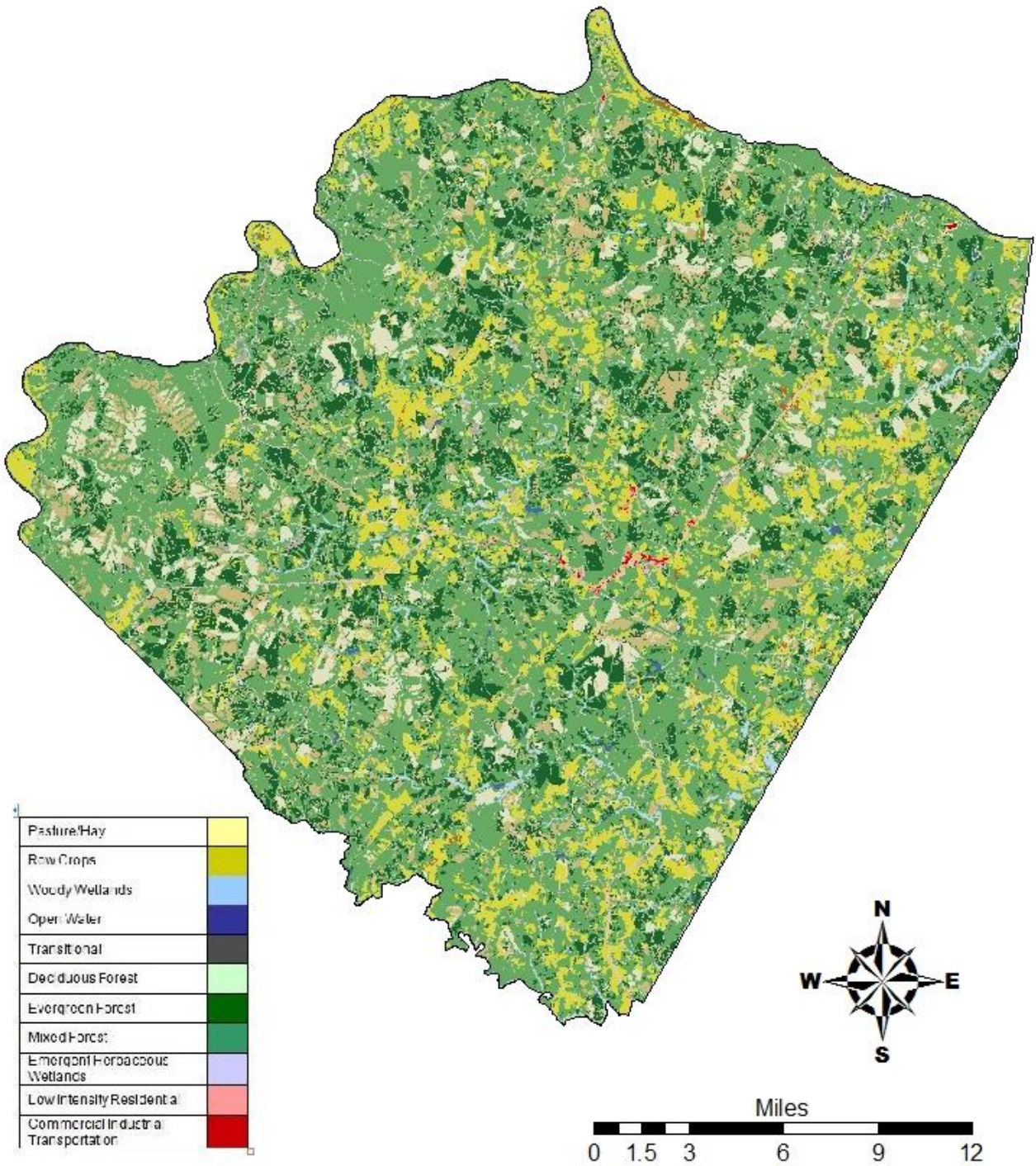
Building Permit Data – Buckingham County/Town of Dillwyn

Year	Residential Permits Issued	Commercial Permits Issued
2001	137	17
2002	158	10
2003	147	12
2004	192	23
2005	202	12
2006	173	11
2007	162	9
2008	146	7
2009	94	3
2010	65	0
2011	59	3
2012	61	11
2013	64	13
2014	60	9
2015	67	14
2016	62	3
2017	70	5
2018	47	2
2019	87	2
2020	92	5
2021	84	8
2022 (through July 2022)	69	2

NOTE: Permits for the Town of Dillwyn are handled through the Buckingham County Building Inspector's Office.

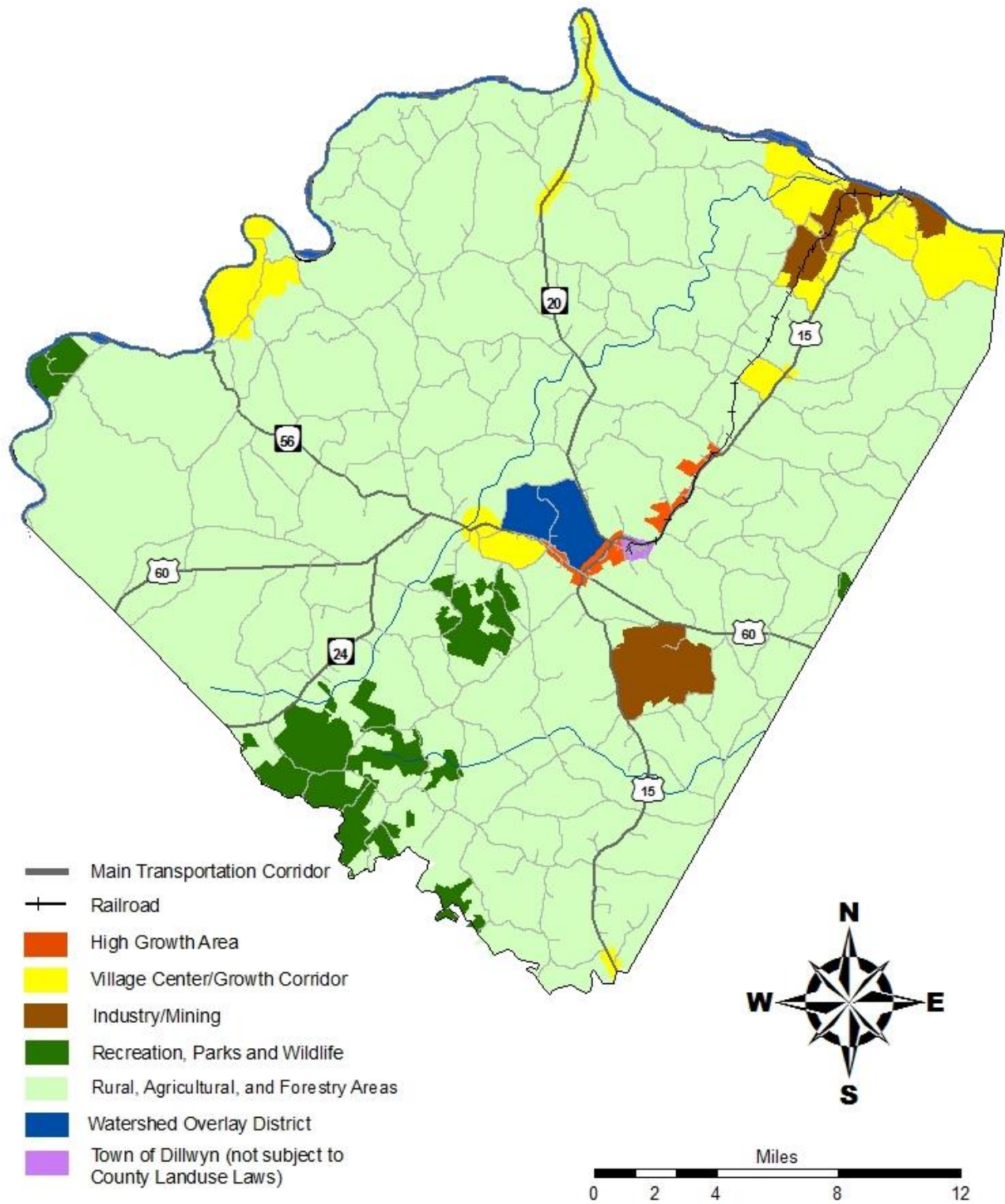
Buckingham County follows the 2018 Virginia Uniform Statewide Building Code – Sections 113.3.2 and 113.3.3 – and the 2018 Virginia Construction Code – Sections 1612.1, 1612.1.1, 1612.2, 1612.3, 1612.3.1, 1612.3.2, and 1612.4 – in regulating the issuance of building permits for construction in flood hazard areas. Buckingham County staff are not aware of any new permits being issued for construction in flood hazard areas since 2018, indicating no increase in development for these areas.

Buckingham County Land Use Cover Map



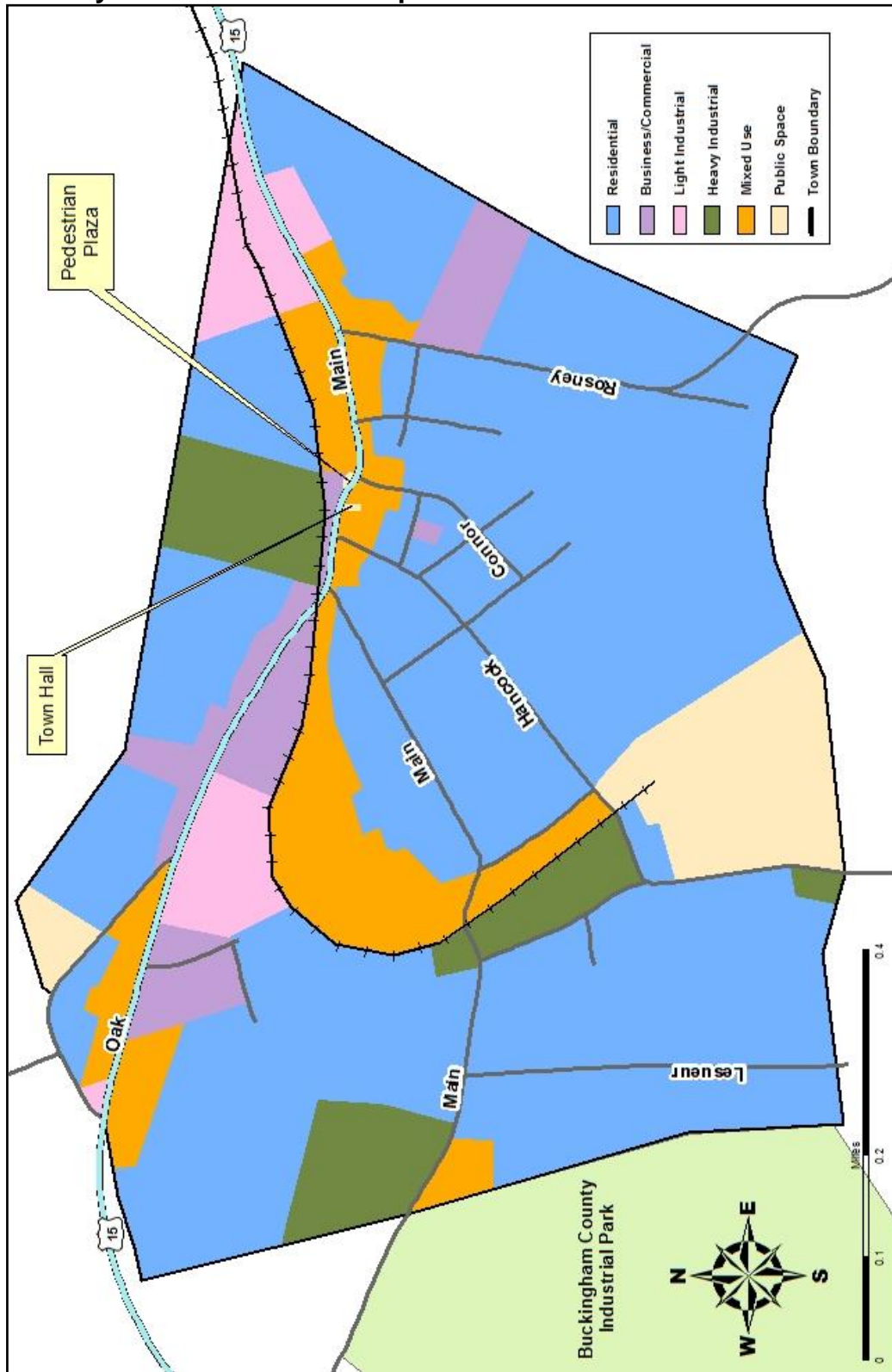
Map created by CRC - October 2015
Source: 2011 National Land Use Cover Dataset

Buckingham County Future Land Use Map



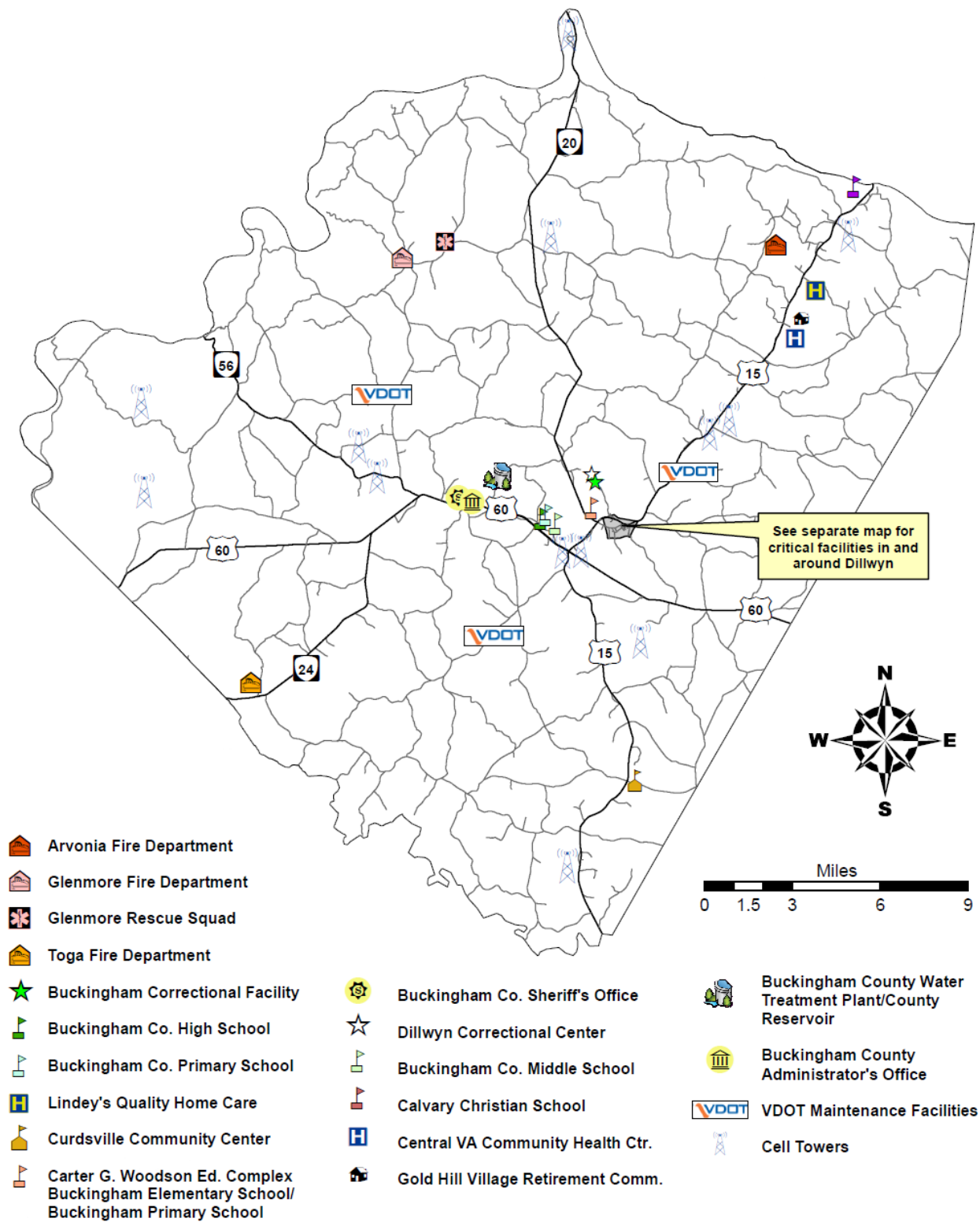
Map created by CRC – March 2015

Town of Dillwyn Future Land Use Map

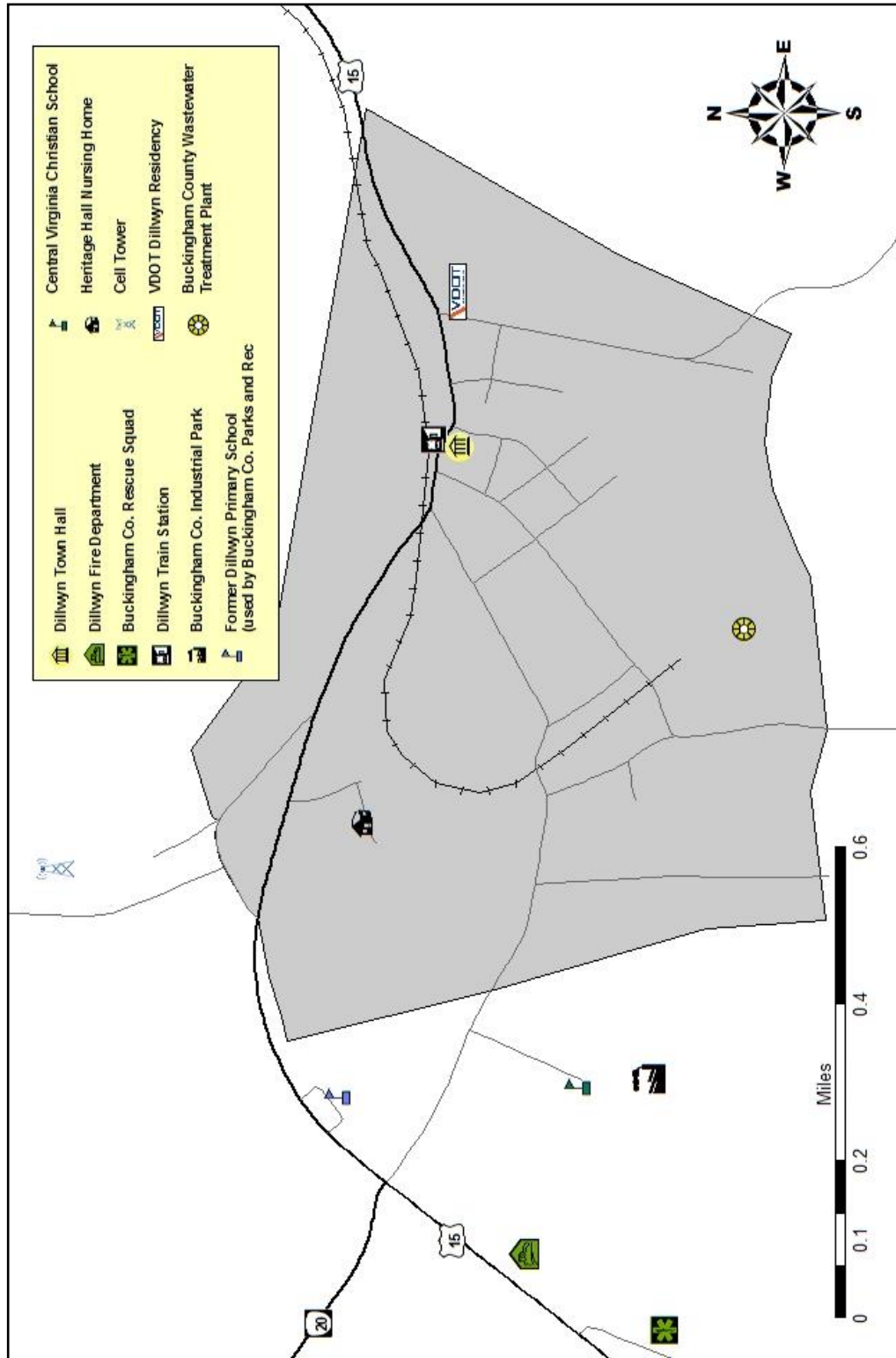


Map created by CRC – August 2016

Buckingham County Critical Facilities Map



Town of Dillwyn (and surround areas) Critical Facilities Map



Map created by CRC – June 2016

Source: Buckingham County Emergency Management, Town of Dillwyn

NFIP Survey Results – Buckingham County

The County was asked to review its previous responses to this survey as part of the Plan update process. County staff advised that there are no changes.

NATIONAL FLOOD INSURANCE PROGRAM (NFIP) SURVEY

MUNICIPALITY: BUCKINGHAM COUNTY

1. FLOODPLAIN IDENTIFICATION AND MAPPING			
Requirement	Recommended Action	Yes/No	Comments
a. Does the municipality maintain accessible copies of an effective Flood Insurance Rate Map (FIRM)/Digital Flood Insurance Rate Map (DFIRM)? Does the municipality maintain accessible copies of the most recent Flood Insurance Study (FIS)?	Place these documents in the local libraries or make available publicly.	yes	
b. Has the municipality adopted the most current DFIRM/FIRM and FIS?	State the date of adoption, if approved.	yes	March 2008
c. Does the municipality support request for map updates?	If yes, state how.	yes	Answer any questions that are asked for clarification
d. Does the municipality share with Federal Emergency Management Agency (FEMA) any new technical or scientific data that could result in map revisions within 6 months of creation or identification of new data?	If yes, specify how.	no	
e. Does the municipality provide assistance with local floodplain determinations?	If yes, specify how.	no	
f. Does the municipality maintain a record of approved Letters of Map Change?	If yes, specify the responsible office.	yes	Zoning/ Planning office

2. FLOODPLAIN MANAGEMENT			
Requirement	Recommended Action	Yes/No	Comments
a. Has the municipality adopted a compliant floodplain management ordinance that, at a minimum, regulates the following:	If yes, answer questions (1) through (4) below.	yes	March 2008
(1) Does the municipality issue permits for all proposed development in the Special Flood Hazard Areas (SFHAs)?	If yes, specify the office responsible.	yes	Zoning/Planning
(2) Does the municipality obtain, review, and utilize any Base Flood Elevation (BFE) and floodway data, and/or require BFE data for subdivision proposals and other development proposals larger than 50 lots or 5 acres?	If yes, specify the office responsible.	yes	Zoning/Planning
(3) Does the municipality identify measures to keep all new and substantially improved construction reasonably safe from flooding to or above the BFE, including anchoring, using flood-resistant materials, and designing or locating utilities and service facilities to prevent water damage?	If yes, specify the office responsible.	yes	Building inspector
(4) Does the municipality document and maintain records of elevation data that document lowest floor elevation for new or substantially improved structures?	If yes, specify the office responsible.	yes	Building Inspector
b. If a compliant floodplain ordinance was adopted, does the municipality enforce the ordinance by monitoring compliance and taking remedial action to correct violations?	If yes, specify how.	yes	Building inspector

2. FLOODPLAIN MANAGEMENT			
<i>Requirement</i>	<i>Recommended Action</i>	<i>Yes/No</i>	<i>Comments</i>
c. Has the municipality considered adopting activities that extend beyond the minimum requirements? Examples include: <ul style="list-style-type: none"> • Participation in the Community Rating System • Prohibition of production or storage of chemicals in SFHA • Prohibition of certain types of structures, such as hospitals, nursing homes, and jails in SFHA • Prohibition of certain types of residential housing (manufactured homes) in SFHA • Floodplain ordinances that prohibit any new residential or nonresidential structures in SFHA 	If yes, specify activities.	no	

3. FLOOD INSURANCE			
<i>Requirement</i>	<i>Recommended Action</i>	<i>Yes/No</i>	<i>Comments</i>
a. Does the municipality educate community members about the availability and value of flood insurance?	If yes, specify how.	yes	Make them aware that flood insurance is required
b. Does the municipality inform community property owners about changes to the DFIRM/FIRM that would impact their insurance rates?	If yes, specify how.	no	
c. Does the municipality provide general assistance to community members regarding insurance issues?	If yes, specify how.	yes	Information store

NFIP Survey Results – Dillwyn

The Town was asked to review its previous responses to this survey as part of the Plan update process. Town staff and officials advised that there are no changes.

NATIONAL FLOOD INSURANCE PROGRAM (NFIP) SURVEY

MUNICIPALITY: TOWN OF DILLWYN – BUCKINGHAM COUNTY

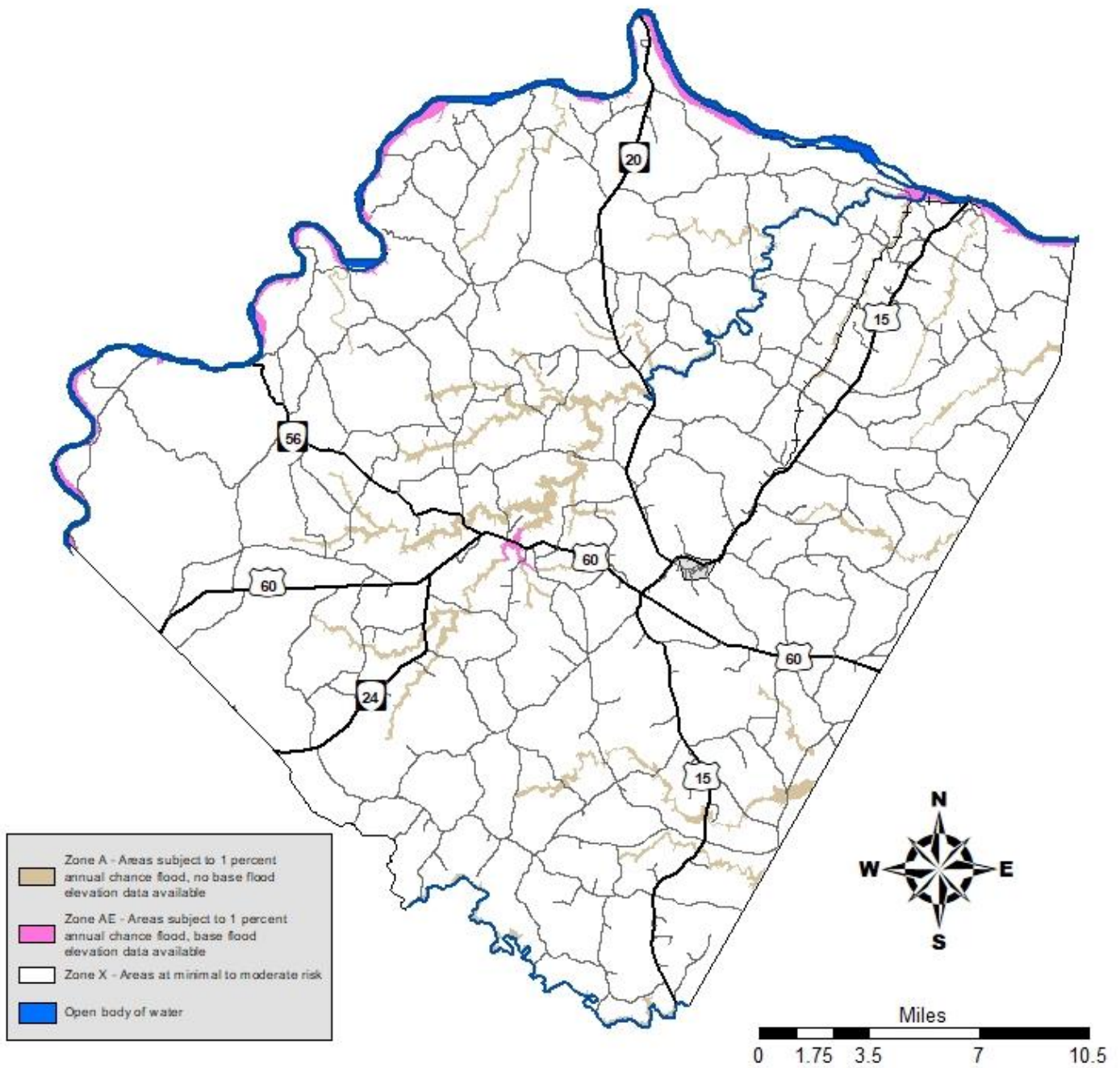
1. FLOODPLAIN IDENTIFICATION AND MAPPING			
Requirement	Recommended Action	Yes/No	Comments
a. Does the municipality maintain accessible copies of an effective Flood Insurance Rate Map (FIRM)/Digital Flood Insurance Rate Map (DFIRM)? Does the municipality maintain accessible copies of the most recent Flood Insurance Study (FIS)?	Place these documents in the local libraries or make available publicly.	no	County maintains
b. Has the municipality adopted the most current DFIRM/FIRM and FIS?	State the date of adoption, if approved.	yes	March 2008 -
c. Does the municipality support request for map updates?	If yes, state how.	yes	Answer any questions that are asked for clarification
d. Does the municipality share with Federal Emergency Management Agency (FEMA) any new technical or scientific data that could result in map revisions within 6 months of creation or identification of new data?	If yes, specify how.	no	
e. Does the municipality provide assistance with local floodplain determinations?	If yes, specify how.	no	
f. Does the municipality maintain a record of approved Letters of Map Change?	If yes, specify the responsible office.	yes	County Zoning/ Planning office

2. FLOODPLAIN MANAGEMENT			
Requirement	Recommended Action	Yes/No	Comments
a. Has the municipality adopted a compliant floodplain management ordinance that, at a minimum, regulates the following:	If yes, answer questions (1) through (4) below.	yes	March 2008
(1) Does the municipality issue permits for all proposed development in the Special Flood Hazard Areas (SFHAs)?	If yes, specify the office responsible.	yes	County Zoning/Planning
(2) Does the municipality obtain, review, and utilize any Base Flood Elevation (BFE) and floodway data, and/or require BFE data for subdivision proposals and other development proposals larger than 50 lots or 5 acres?	If yes, specify the office responsible.	yes	County Zoning/Planning
(3) Does the municipality identify measures to keep all new and substantially improved construction reasonably safe from flooding to or above the BFE, including anchoring, using flood-resistant materials, and designing or locating utilities and service facilities to prevent water damage?	If yes, specify the office responsible.	yes	County Building inspector
(4) Does the municipality document and maintain records of elevation data that document lowest floor elevation for new or substantially improved structures?	If yes, specify the office responsible.	yes	County Building Inspector
b. If a compliant floodplain ordinance was adopted, does the municipality enforce the ordinance by monitoring compliance and taking remedial action to correct violations?	If yes, specify how.	yes	County Building inspector

2. FLOODPLAIN MANAGEMENT			
<i>Requirement</i>	<i>Recommended Action</i>	<i>Yes/No</i>	<i>Comments</i>
c. Has the municipality considered adopting activities that extend beyond the minimum requirements? Examples include: <ul style="list-style-type: none"> • Participation in the Community Rating System • Prohibition of production or storage of chemicals in SFHA • Prohibition of certain types of structures, such as hospitals, nursing homes, and jails in SFHA • Prohibition of certain types of residential housing (manufactured homes) in SFHA • Floodplain ordinances that prohibit any new residential or nonresidential structures in SFHA 	If yes, specify activities.	no	

3. FLOOD INSURANCE			
<i>Requirement</i>	<i>Recommended Action</i>	<i>Yes/No</i>	<i>Comments</i>
a. Does the municipality educate community members about the availability and value of flood insurance?	If yes, specify how.	yes	Make them aware that flood insurance is required
b. Does the municipality inform community property owners about changes to the DFIRM/FIRM that would impact their insurance rates?	If yes, specify how.	no	
c. Does the municipality provide general assistance to community members regarding insurance issues?	If yes, specify how.	yes	Information store

Buckingham County Flood Zone Maps



Map created by CRC – July 2022 (Source – FEMA)

