

## **APPENDIX F – NOTTOWAY COUNTY AND TOWNS OF BLACKSTONE, BURKEVILLE, CREWE**

Locality Map

Status of Mitigation Actions

Building Permit Data

Land Use Cover Map

Future Land Use Maps

Critical Facilities Maps

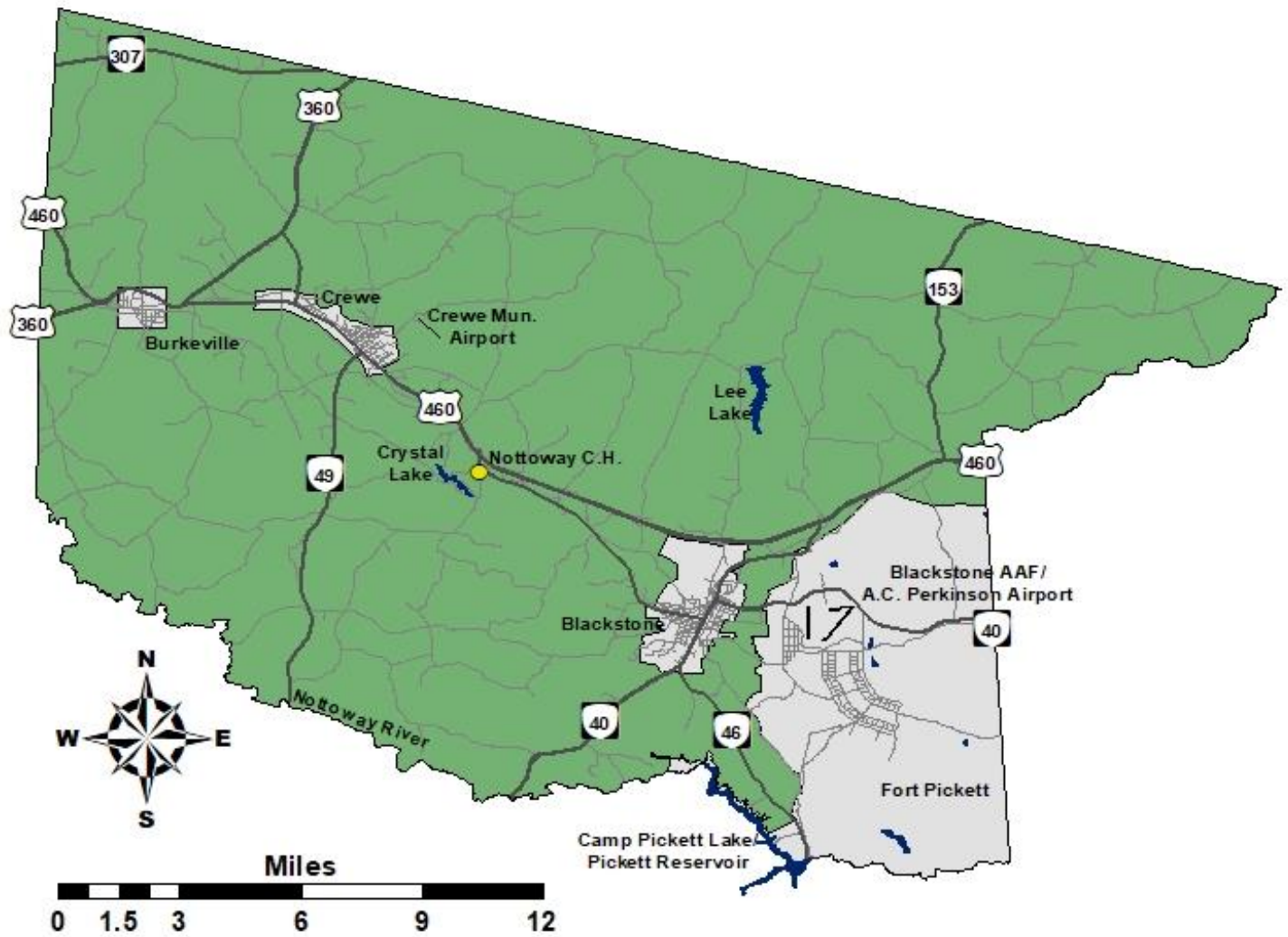
NFIP Survey Results

Flood Zone Maps

### **NOTES:**

- 1) For this update, the methodology for ranking hazards was changed. Localities were not actually tasked with scoring/ranking covered hazards directly. Table 6.17 in Section 6 of the Plan shows the risk ratings for the region based on quantitative and qualitative analysis as well as anecdotal input from the Project Management Team but is not based on a locality ranking system. As a result, the "Hazard Ranking" table that appeared in the local appendices for the previous Plan updates has been supplanted by the "Hazard Risk Ratings" table (Table 6.17) in Section 6.
- 2) For the status of mitigation actions, any actions that were removed per previous Plan updates are not shown in this update. This section was also amended to list actions completed per prior Plan updates separately.

## Nottoway County



Map created by CRC – May 2010 (amended September 2022)

## Detailed Information/Status of Local Mitigation Actions

(includes detailed data for each action, as requested by FEMA)

### Nottoway County

<b>Nottoway County Mitigation Action 1</b>	<b>Plan for additional water supply, water line replacements and extended water lines (to respond to drought/fire protection emergencies) – action applies to Nottoway County and the Towns of Blackstone, Burkeville, and Crewe.</b>	
<b>Category:</b>	Prevention/Emergency Services	
<b>Hazard(s) Addressed:</b>	Insufficient Fire Protection Water Flow, Drought	
<b>Priority (High, Moderate, Low):</b>	High	
<b>Estimated Cost:</b>	Unknown at this time, needs product and installation research, request for proposals	
<b>Potential Funding Sources:</b>	VDH-ODW or USDA RD planning grant (with local matching funds as required)	
<b>Lead Agency/Department Responsible:</b>	County Planning & Economic Development, County Dept. of Emergency Services, Town Staff	
<b>Implementation Schedule:</b>	Dependent on availability of funding and whether County and Towns partner or pursue separately	
<b>Status: In planning stage – staff in place, research needed on water needs and construction designs, pursuing state and federal grants for funding</b>		

<b>Nottoway County Mitigation Action 2</b>	<b>Prohibit or limit floodplain development through regulatory and/or incentive-based measures.</b>	
<b>Category:</b>	Prevention/Property Protection	
<b>Hazard(s) Addressed:</b>	Flood	
<b>Priority (High, Moderate, Low):</b>	Moderate	
<b>Estimated Cost:</b>	None – would only involve changes to ordinances	
<b>Potential Funding Sources:</b>	N/A	
<b>Lead Agency/Department Responsible:</b>	County Planning & Economic Development, Town Staff	
<b>Implementation Schedule:</b>	Short/near term	
<b>Status: Ongoing – managed through County ordinances that address floodplain areas</b>		

<b>Nottoway County NEW Mitigation Action 3</b>	<b>Purchase and install emergency back-up generators and automatic transfer capability that will provide electrical power to critical infrastructure facilities and are adequate to cover the entire facility in need.</b>
<b>Category:</b>	Emergency Services
<b>Hazard(s) Addressed:</b>	Power Outage in Critical Infrastructure Facilities, specific needs at County Emergency Operations Center (EOC), Landfill Facility, Animal Shelter Facility, Public Schools Maintenance Facility; Tower Sites for public safety communications
<b>Priority (High, Moderate, Low):</b>	High
<b>Estimated Cost:</b>	Depends on the structure, will vary in electrical load
<b>Potential Funding Sources:</b>	BRIC, HMGP, USDA RD (with local matching funds)
<b>Lead Agency/Department Responsible:</b>	County Admin., County Dept. of Emergency Services, County Building & Grounds Staff,
<b>Implementation Schedule:</b>	Dependent on availability of funding
<b>Status: In planning stage – staff in place, research completed for adequate size and location of generators; electrical load analysis and quotes obtained; pursuing state and federal grants for funding</b>	

<b>Nottoway County NEW Mitigation Action 4</b>	<b>Implement early warning siren systems in each town and any other areas that are not covered within each town's audible alerting range to notify the general public of severe weather-related emergencies.</b>
<b>Category:</b>	Emergency Services
<b>Hazard(s) Addressed:</b>	Multiple
<b>Priority (High, Moderate, Low):</b>	High
<b>Estimated Cost:</b>	Unknown at this time, quotes will be requested
<b>Potential Funding Sources:</b>	BRIC, HMGP, USDA RD (with local matching funds)
<b>Lead Agency/Department Responsible:</b>	County Dept. of Emergency Services, Town Staffs
<b>Implementation Schedule:</b>	Dependent on availability of funding
<b>Status: Researching vendors, determining best locations, and collecting quotes on sirens plus installation costs; pursuing state and federal grants for funding</b>	

<b>Nottoway County NEW Mitigation Action 5</b>	<b>Install hurricane-rated protective covering over windows in the county emergency operations center (EOC) and the Sheriff's Office facility with the 9-1-1 emergency communications center. Also install hurricane-rated protective covering over the exterior doors of the Sheriff's Office facility and the exterior door to the county emergency operations center.</b>	
<b>Category:</b>	Emergency Services/Property Protection	
<b>Hazard(s) Addressed:</b>	Severe Weather/Damage from Wind/Debris	
<b>Priority (High, Moderate, Low):</b>	High	
<b>Estimated Cost:</b>	Approx. \$45,000	
<b>Potential Funding Sources:</b>	BRIC, HMGP, USDA RD (with local matching funds)	
<b>Lead Agency/Department Responsible:</b>	County Dept. of Emergency Services	
<b>Implementation Schedule:</b>	Dependent on availability of funding	
<b>Status: Researching vendors, determining best product types for specific building application, collected quotes on sirens plus installation costs; pursuing state and federal grants for funding</b>		

<b>Nottoway County</b> <b>NEW Mitigation Action 6</b>	<b>Establish a Fire Prevention Inspection and Code Enforcement program for commercial buildings, multi-family occupancies, etc. that would fall under the Virginia Statewide Fire Prevention Code and partner with the Towns of Blackstone, Burkeville, and Crewe to inspect their structures and enforce the code by a process similar to the building code program.</b>	
<b>Category:</b>	Fire Prevention	
<b>Hazard(s) Addressed:</b>	Fire	
<b>Priority (High, Moderate, Low):</b>	Moderate	
<b>Estimated Cost:</b>	Unknown, consider partnership	
<b>Potential Funding Sources:</b>	County budget; partnership with towns, revenue recovery	
<b>Lead Agency/Department Responsible:</b>	County Administration	
<b>Implementation Schedule:</b>	Short/near term	
<b>Status: Waiting for adoption of the fire prevention code. Planning meetings should be scheduled with each town to review an agreement with the county for fire prevention inspections and code enforcement by a process similar to the building code program.</b>		

<b>Nottoway County NEW Mitigation Action 7</b>	<b>Advocate for the clearing of vegetation to establish a protection area of limited natural fuel load in the wildland/urban interface. Request a Wildfire Risk Assessment for the Firewise Virginia Community Hazard Mitigation from the Virginia Dept. of Forestry (VDOF) as a guide to determining if Nottoway County has the need for any of the eligible mitigation projects to reduce the wildfire hazard due to natural wildland growth and homes in the wildland/urban interface.</b>
<b>Category:</b>	Fire Prevention / Rural Water Supplies
<b>Hazard(s) Addressed:</b>	Fire, community water source shortages
<b>Priority (High, Moderate, Low):</b>	Moderate
<b>Estimated Cost:</b>	Unknown at this time
<b>Potential Funding Sources:</b>	VDOF and partner agency grant programs
<b>Lead Agency/Department Responsible:</b>	Local VDOF Office, County Dept. of Emergency Services
<b>Implementation Schedule:</b>	Short/near term
<b>Status: County will consult with local VDOF Forest Managers to assess the areas around the county for wildland vegetation impinging on residential neighborhoods and the available rural water supply sources.</b>	

**Mitigation actions completed since previous plan**

<b>Nottoway County Mitigation Action</b>	<b>Ensure that designated emergency shelters are well-equipped and readily available for all citizens of the county.</b>
<b>Category:</b>	Emergency Services
<b>Hazard(s) Addressed:</b>	Multiple
<b>Priority (High, Moderate, Low):</b>	High
<b>Estimated Cost:</b>	Unknown at this time
<b>Potential Funding Sources:</b>	Grants/federal programs
<b>Lead Agency/Department Responsible:</b>	County Dept. of Emergency Services, County Dept. of Social Services, and Town Staff Liaisons
<b>Implementation Schedule:</b>	Dependent on availability of funding
<b>Status: COMPLETED – Shelter Upgrade Grant awarded for generator upgrades and interior portable signage purchased. Three designated shelters stay in ready mode with a capacity of 175 persons each in all shelters.</b>	

<b>Nottoway County Mitigation Action</b>	<b>Implement community early warning systems designed to notify the general public during weather related emergencies.</b>
<b>Category:</b>	Emergency Services
<b>Hazard(s) Addressed:</b>	Multiple
<b>Priority (High, Moderate, Low):</b>	High/Moderate
<b>Estimated Cost:</b>	Depends on what, if any, new equipment, staffing, and training would be required
<b>Potential Funding Sources:</b>	Grant Funding
<b>Lead Agency/Department Responsible:</b>	County Dept. of Emergency Services, County Emergency Communications Center, Town Staff
<b>Implementation Schedule:</b>	Dependent on availability of funding
<b>Status: COMPLETED (June 2022) – County has consolidated the CodeRED notification system that now includes one system for the county and three towns.</b>	

<b>Nottoway County Mitigation Action</b>	<b>Provide public education and awareness to better inform citizens of Nottoway County about natural hazards and their role in prevention</b>
<b>Category:</b>	Public education and awareness
<b>Hazard(s) Addressed:</b>	Multiple
<b>Priority (High, Moderate, Low):</b>	High
<b>Estimated Cost:</b>	Unknown at this time
<b>Potential Funding Sources:</b>	Local, grants, planning grants
<b>Lead Agency/Department Responsible:</b>	County Administration, County Dept. of Emergency Services
<b>Implementation Schedule:</b>	Dependent on availability of funding
<b>Status: COMPLETED – County website and Facebook page established to share information about hazards and preparedness steps; CodeRED was also consolidated into one umbrella notification system.</b>	

The following Mitigation Actions that have been identified by Nottoway County to be removed from the plan due to lack of funding or considered to be not feasible at this time.

<b>Nottoway County Mitigation Action</b>	<b>Install storm water drainage system to prevent flooding in homes and buildings in flood prone areas – action applies to County and the Towns of Blackstone, Burkeville, and Crewe.</b>
<b>Category:</b>	<b>Prevention/Property Protection</b>
<b>Hazard(s) Addressed:</b>	<b>Flood</b>
<b>Priority (High, Moderate, Low):</b>	<b>High</b>
<b>Estimated Cost:</b>	<b>Depending on size of area to be protected, could be anywhere from \$100,000 to \$500,000 or more per area</b>
<b>Potential Funding Sources:</b>	<b>FEMA grant, with local funding match</b>
<b>Lead Agency/Department Responsible:</b>	<b>Town Admin. Staff, County Planning &amp; Economic Development, County Dept. of Emergency Services</b>
<b>Implementation Schedule:</b>	<b>Dependent on availability of funding</b>
<b>Status: REMOVE – Not currently considered a priority, no action taken, lack of funding.</b>	

<b>Nottoway County Mitigation Action</b>	<b>Protect repetitively flooded structures from flood damage. Actions could include flood proofing retrofits, elevation of structure and/or critical components, acquisition and demolition, relocation or repurposing of structure.</b>
<b>Category:</b>	<b>Prevention/Property Protection</b>
<b>Hazard(s) Addressed:</b>	<b>Flood</b>
<b>Priority (High, Moderate, Low):</b>	<b>Low-Moderate</b>
<b>Estimated Cost:</b>	<b>Depending on the structure(s), could be up to \$500,000 or more per structure</b>
<b>Potential Funding Sources:</b>	<b>FEMA grant, with local funding match</b>
<b>Lead Agency/Department Responsible:</b>	<b>County Planning &amp; Economic Development, County Dept. of Emergency Services</b>
<b>Implementation Schedule:</b>	<b>Dependent on availability of funding</b>
<b>Status: REMOVE – Not currently considered a priority based on lack of flooding incidents of this type, minimal threat where this action would be needed.</b>	



## Town of Blackstone

NOTE: The Town of Blackstone has determined that acquisition, relocation, elevation, or floodproofing is not a priority for them, due to the lack of flooding issues in their locality. Consequently, they do not have a mitigation strategy addressing this.

<b>Blackstone Mitigation Action 1</b>	<b>Inspect and replace fire hydrants on a regular basis, which are outdated or not working throughout the town and on any extension line beyond the town limits.</b>
<b>Category:</b>	Prevention/Emergency Services
<b>Hazard(s) Addressed:</b>	Fire Prevention
<b>Priority (High, Moderate, Low):</b>	High
<b>Estimated Cost:</b>	Labor, Cost of Supplies
<b>Potential Funding Sources:</b>	Town of Blackstone budget; infrastructure grants
<b>Lead Agency/Departments Involved:</b>	Town of Blackstone, Town Public Works, Blackstone VFD
<b>Implementation Schedule:</b>	Short/near term (as soon as possible)
<b>Status: Staffing is in place to complete. Additional funding needed.</b>	

<b>Blackstone NEW Mitigation Action 2</b>	<b>Plan for additional water supply, water line replacements and extended water lines (to respond to drought/fire protection emergencies) – action applies to Nottoway County and the Towns of Blackstone, Burkeville, and Crewe.</b>
<b>Category:</b>	Prevention/Emergency Services
<b>Hazard(s) Addressed:</b>	Insufficient Fire Protection Water Flow, Drought
<b>Priority (High, Moderate, Low):</b>	High
<b>Estimated Cost:</b>	Unknown at this time
<b>Potential Funding Sources:</b>	VDH-ODW or USDA RD (with any required local match)
<b>Lead Agency/Department Responsible:</b>	County Planning & Economic Development, County Dept. of Emergency Services, Town Admin. Staff, Town Public Works (depending on whether the localities partner or pursue separately)
<b>Implementation Schedule:</b>	Short/near term, dependent on availability of funding, and whether County and Towns partner or pursue separately
<b>Status: In planning stage – staff in place, discussions underway, research needed on water needs and construction designs, pursuing state and federal grants for funding; and jurisdictional agreements need to be completed.</b>	

<b>Blackstone NEW Mitigation Action 3</b>	<b>Convert the Water Treatment Plant process from chlorine to a hypochloride solution treatment to mitigate the haz-mat potential.</b>
<b>Category:</b>	Prevention
<b>Hazard(s) Addressed:</b>	Aging system, reliability, need for safety through water treatment options by eliminating the need to use and store chlorine for treatment process
<b>Priority (High, Moderate, Low):</b>	Moderate
<b>Estimated Cost:</b>	Unknown at this time, research and quotes needed
<b>Potential Funding Sources:</b>	VDH-ODW, USDA RD
<b>Lead Agency/Department Responsible:</b>	Town Admin. Staff, Town Public Works
<b>Implementation Schedule:</b>	Dependent on availability of funding
<b>Status: In planning stage – staff in place, discussions underway, research needed on water treatment options, pursuing state and federal grants for funding.</b>	

<b>Blackstone NEW Mitigation Action 4</b>	<b>Purchase and install emergency back-up generators and automatic transfer capability that will provide electrical power to critical infrastructure facilities, which are adequate to cover the entire facility in need.</b>
<b>Category:</b>	Emergency Services
<b>Hazard(s) Addressed:</b>	Power Outage in Critical Infrastructure Facilities; specifically, Harris Memorial Armory
<b>Priority (High, Moderate, Low):</b>	High
<b>Estimated Cost:</b>	Depends on the structure, will vary in electrical load
<b>Potential Funding Sources:</b>	BRIC, HMGP, or USDA RD (with local matching funds)
<b>Lead Agency/Department Responsible:</b>	Town Admin. Staff, Town Public Works
<b>Implementation Schedule:</b>	Dependent on availability of funding
<b>Status: In planning stage – staff in place, research needed for adequate size and location of generators; electrical load analysis and quotes needed; pursuing state and federal grants for funding.</b>	

<b>Blackstone Mitigation Action 5</b>	<b>Partner with Nottoway County to establish a Fire Prevention Inspection and Code Enforcement program for town buildings that would fall under the Virginia Statewide Fire Prevention Code.</b>
<b>Category:</b>	Fire Prevention
<b>Hazard(s) Addressed:</b>	Fire
<b>Priority (High, Moderate, Low):</b>	Moderate
<b>Estimated Cost:</b>	Unknown, consider partnership
<b>Potential Funding Sources:</b>	Town of Blackstone; partnership with county, revenue recovery
<b>Lead Agency/Department Responsible:</b>	Town Admin. Staff, County Code Official, Blackstone VFD, County Dept. of Emergency Services
<b>Implementation Schedule:</b>	Short/near term
<b>Status: Waiting for adoption of the fire prevention code. Planning meetings should be scheduled with each town and complete an agreement with the county for fire prevention inspections and code enforcement similar to the building inspection code process.</b>	

<b>Blackstone Mitigation Action 6</b>	<b>Review all permits for new development and substantial improvements for compliance with the Town's ordinances as they relate to flood areas.</b>
<b>Category:</b>	Prevention/Property Protection
<b>Hazard(s) Addressed:</b>	Flood
<b>Priority (High, Moderate, Low):</b>	Moderate
<b>Estimated Cost:</b>	None
<b>Potential Funding Sources:</b>	N/A
<b>Lead Agency/Department Responsible:</b>	Town Staff
<b>Implementation Schedule:</b>	Short/near term
<b>Status: Ongoing – enforced through the Town's Subdivision Ordinance.</b>	

### Town of Burkeville

<b>Burkeville NEW Mitigation Action 1</b>	<b>Inspect and replace fire hydrants on a regular basis, which are outdated or not working throughout the town and any extension lines beyond the town limits.</b>	
<b>Category:</b>	Prevention/Emergency Services	
<b>Hazard(s) Addressed:</b>	Multiple	
<b>Priority (High, Moderate, Low):</b>	High	
<b>Estimated Cost:</b>	Labor, Cost of Supplies	
<b>Potential Funding Sources:</b>	Town of Burkeville budget; infrastructure grants	
<b>Lead Agency/Departments Involved:</b>	Town of Burkeville, Burkeville VFD, Water System Operator	
<b>Implementation Schedule:</b>	Short/near term (as soon as possible)	
<b>Status: Staffing is in place to complete. Additional funding needed.</b>		

<b>Burkeville Mitigation Action 2</b>	<b>Plan for additional water supply, water line replacements and extended water lines (to respond to drought/fire protection emergencies) – action applies to Nottoway County and the Towns of Blackstone, Burkeville, and Crewe.</b>	
<b>Category:</b>	Prevention/Emergency Services	
<b>Hazard(s) Addressed:</b>	Insufficient Fire Protection Water Flow, Drought	
<b>Priority (High, Moderate, Low):</b>	High	
<b>Estimated Cost:</b>	Unknown at this time	
<b>Potential Funding Sources:</b>	VDH-ODW or USDA RD (with any required local match)	
<b>Lead Agency/Department Responsible:</b>	County Planning & Economic Development, County Dept. of Emergency Services, Town Admin. Staff, Town Public Works (depending on whether the localities partner or pursue separately)	
<b>Implementation Schedule:</b>	Dependent on availability of funding/whether County and Towns partner or pursue the project separately	
<b>Status: In planning stage – staff in place, discussions underway, research needed on water needs and construction designs, pursuing state and federal grants for funding; and jurisdictional agreements need to be completed.</b>		

<b>Burkeville NEW Mitigation Action 3</b>	<b>Purchase and install emergency back-up generators and automatic transfer capability that will provide electrical power to critical infrastructure facilities, which are adequate to cover the entire facility in need.</b>
<b>Category:</b>	Emergency Services
<b>Hazard(s) Addressed:</b>	Power Outage in Critical Infrastructure Facilities; specifically, Sewerage Pump Facility, Town Office Facility, Well Water Pumping System
<b>Priority (High, Moderate, Low):</b>	High
<b>Estimated Cost:</b>	Depends on the structure, will vary in electrical load
<b>Potential Funding Sources:</b>	BRIC, HMGP, or USDA RD (with local matching funds)
<b>Lead Agency/Department Responsible:</b>	Town Admin. Staff, assistance from County Dept. of Emergency Services
<b>Implementation Schedule:</b>	Dependent on availability of funding
<b>Status: In planning stage – staff in place, research needed for adequate size and location of generators; electrical load analysis and quotes needed; pursuing state and federal grants for funding.</b>	

The following Mitigation Actions that have been identified to be removed from the plan due to lack of funding or considered to be not feasible at this time.

<b>Burkeville Mitigation Action</b>	<b>Amend the zoning/subdivision ordinances to include restrictions on building in areas subject to flooding.</b>
<b>Category:</b>	Prevention/Property Protection
<b>Hazard(s) Addressed:</b>	Flood
<b>Priority (High, Moderate, Low):</b>	Moderate
<b>Estimated Cost:</b>	None – would only involve changes to ordinances
<b>Potential Funding Sources:</b>	N/A
<b>Lead Agency/Department Responsible:</b>	Town Admin. Staff
<b>Implementation Schedule:</b>	Short/near term
<b>Status: REMOVE - No action taken – Would require a change to Town ordinances</b>	

<b>Burkeville Mitigation Action</b>	<b>Protect structures at risk of flooding from flood damage. Actions could include flood proofing retrofits, elevation of structure and/or critical components, acquisition and demolition, relocation or repurposing of structure.</b>
<b>Category:</b>	Prevention/Property Protection
<b>Hazard(s) Addressed:</b>	Flood
<b>Priority (High, Moderate, Low):</b>	Low-Moderate
<b>Estimated Cost:</b>	Depending on the structure(s), could be up to \$500,000 or more per structure
<b>Potential Funding Sources:</b>	FEMA grant, with local funding match
<b>Lead Agency/Department Responsible:</b>	Town Admin. Staff
<b>Implementation Schedule:</b>	Dependent on availability of funding
<b>Status: REMOVE - No action taken, will depend on available funding and the presence of affected buildings for which action is needed.</b>	

#### **Town of Crewe**

<b>Crewe NEW Mitigation Action 1</b>	<b>Inspect and replace fire hydrants on a regular basis, which are outdated or not working throughout the town and any extension lines beyond the town limits.</b>
<b>Category:</b>	Prevention/Emergency Services
<b>Hazard(s) Addressed:</b>	Fire Prevention
<b>Priority (High, Moderate, Low):</b>	High
<b>Estimated Cost:</b>	Labor, Cost of Supplies
<b>Potential Funding Sources:</b>	Town of Crewe budget; infrastructure grants
<b>Lead Agency/Departments Involved:</b>	Town Admin. Staff, Town Public Works, Crewe VFD
<b>Implementation Schedule:</b>	Short/near term (as soon as possible)
<b>Status: Staffing is in place to complete. Additional funding needed.</b>	

<b>Crewe NEW Mitigation Action 2</b>	<b>Plan for additional water supply, water line replacements and extended water lines (to respond to drought/fire protection emergencies) – action applies to Nottoway County and the Towns of Blackstone, Burkeville, and Crewe.</b>
<b>Category:</b>	Prevention/Emergency Services
<b>Hazard(s) Addressed:</b>	Insufficient Fire Protection Water Flow, Drought
<b>Priority (High, Moderate, Low):</b>	High
<b>Estimated Cost:</b>	Unknown at this time
<b>Potential Funding Sources:</b>	VDH-ODW or USDA RD (with any required local matching funds)
<b>Lead Agency/Department Responsible:</b>	County Planning & Economic Development, County Dept. of Emergency Services, Town Admin. Staff, Town Public Works (depending on whether the localities partner or pursue separately)
<b>Implementation Schedule:</b>	Dependent on availability of funding and whether County and Towns partner or pursue project separately
<b>Status: In planning stage – staff in place, discussions underway, research needed on water needs and construction designs, pursuing state and federal grants for funding; and jurisdictional agreements need to be completed.</b>	

<b>Crewe NEW Mitigation Action 3</b>	<b>Purchase and install emergency back-up generators and automatic transfer capability that will provide electrical power to critical infrastructure facilities, which are adequate to cover the entire facility in need.</b>
<b>Category:</b>	Emergency Services
<b>Hazard(s) Addressed:</b>	Power Outage in Critical Infrastructure Facilities; specifically, Crewe Community Center and Town Hall
<b>Priority (High, Moderate, Low):</b>	High
<b>Estimated Cost:</b>	Depends on the structure, will vary in electrical load
<b>Potential Funding Sources:</b>	BRIC, HMGP, or USDA RD (with local matching funds)
<b>Lead Agency/Department Responsible:</b>	Town Admin. Staff., Town Public Works, assistance from County Dept. of Emergency Services
<b>Implementation Schedule:</b>	Dependent on availability of funding
<b>Status: In planning stage – staff in place, research needed for adequate size and location of generators; electrical load analysis and quotes needed; pursuing state and federal grants for funding.</b>	

<b>Crewe Mitigation Action 4</b>	<b>Develop plan to better control storm water drainage and inflow into sewer lines that constantly cause flooding problems to the wastewater treatment plant.</b>	
<b>Category:</b>	Prevention	
<b>Hazard(s) Addressed:</b>	Flood	
<b>Priority (High, Moderate, Low):</b>	High	
<b>Estimated Cost:</b>	Planning plus any required construction	
<b>Potential Funding Sources:</b>	BRIC, HMGP, or USDA RD (with any required local matching funds)	
<b>Lead Agency/Department Responsible:</b>	Town Admin. Staff, Utilities Department	
<b>Implementation Schedule:</b>	Short term/dependent on availability of funding	
<b>Status: Ongoing- awaiting funding; check to see if this is still a hazard mitigation issue</b>		

Crewe Mitigation Action 5	Amend the zoning/subdivision ordinances to include restrictions on building in areas subject to flooding.	
Category:	Prevention/Property Protection	
Hazard(s) Addressed:	Flood	
Priority (High, Moderate, Low):	Moderate	
Estimated Cost:	None – would only involve changes to ordinances	
Potential Funding Sources:	N/A	
Lead Agency/Department Responsible:	Town Admin. Staff, County Planning & Economic Development	
Implementation Schedule:	Short/near term	
Status: No action taken – Requires a change to Town ordinances		

Crewe Mitigation Action 6	Protect repetitively flooded structures from flood damage. Actions could include flood proofing retrofits, elevation of structure and/or critical components, acquisition and demolition, relocation or repurposing of structure.	
Category:	Prevention/Property Protection	
Hazard(s) Addressed:	Flood	
Priority (High, Moderate, Low):	Low-Moderate	
Estimated Cost:	Depending on the structure(s), could be up to \$500,000 or more per structure	
Potential Funding Sources:	BRIC, HMGP, or USDA RD (with local matching funds)	
Lead Agency/Department Responsible:	Town Admin. Staff, Town Public Works, County Code Official, County Planning & Economic Development, County Dept. of Emergency Services	
Implementation Schedule:	Dependent on availability of funding	
Status: No action taken, will depend on available funding and the presence of potential buildings for which action is needed.		



<b>Crewe NEW Mitigation Action 7</b>	<b>Convert the Water Treatment Plant process from chlorine to a hypochloride solution treatment to mitigate the haz-mat potential.</b>
<b>Category:</b>	Prevention
<b>Hazard(s) Addressed:</b>	Aging system, reliability, need for safety through water treatment options by eliminating the need to use and store chlorine for treatment process
<b>Priority (High, Moderate, Low):</b>	Moderate
<b>Estimated Cost:</b>	Unknown at this time, research and quotes needed
<b>Potential Funding Sources:</b>	VDH-ODW or USDA RD
<b>Lead Agency/Department Responsible:</b>	Town Admin. Staff, Town Public Works
<b>Implementation Schedule:</b>	Dependent on availability of funding
<b>Status: In planning stage – staff in place, discussions underway, research needed on water treatment options, pursuing state and federal grants for funding.</b>	

**Mitigation actions completed per previous Plan updates:**

- Provide Public Education and Awareness to better inform citizens about natural hazards – completed per the 2018 Plan Update.

**The following Mitigation Actions that have been identified to be removed from the plan due to lack of funding or considered to be not feasible at this time.**

<b>Crewe Mitigation Action</b>	<b>Encourage residents to keep storm drains clear of debris during storms.</b>
<b>Category:</b>	Public Education and Awareness
<b>Hazard(s) Addressed:</b>	Flood
<b>Priority (High, Moderate, Low):</b>	High/Moderate
<b>Estimated Cost:</b>	Minimal
<b>Potential Funding Sources:</b>	N/A
<b>Lead Agency/Department Responsible:</b>	Town Staff (with possible assistance from VDEM, CRC)
<b>Implementation Schedule:</b>	Short/near term, depending on availability of staff
<b>Status: REMOVE - No funding needed – Unable to enforce</b>	

<b>Crewe Mitigation Action</b>	<b>Ensure that adequate personnel/equipment are available to fight wildfires and structural fires.</b>
<b>Category:</b>	Prevention
<b>Hazard(s) Addressed:</b>	Fire
<b>Priority (High, Moderate, Low):</b>	Moderate/High
<b>Estimated Cost:</b>	Cost to train personnel, purchase equipment
<b>Potential Funding Sources:</b>	Grants/local funding
<b>Lead Agency/Dept. Responsible:</b>	Town Admin. Staff (with assistance from County Dept. of Emer. Services)
<b>Implementation Schedule:</b>	Dependent on availability of funding
<b>Status: REMOVE - No action taken – requires different funding stream for paying personnel.</b>	

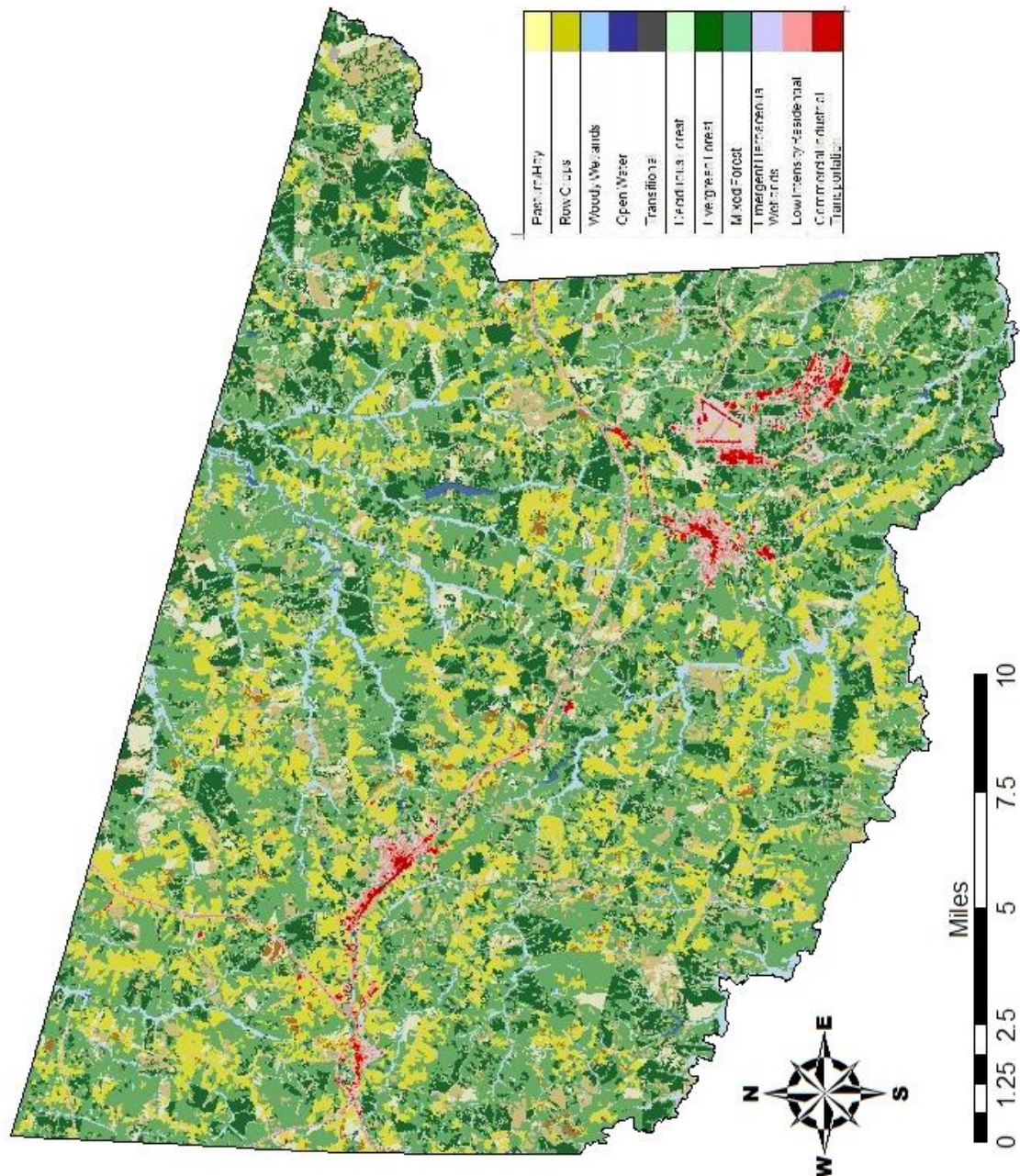
## Building Permit Data – Nottoway County

Year	Residential Permits Issued	Commercial Permits Issued
1995	91	9
1996	100	13
1997	91	11
1998	96	11
1999	114	17
2000	81	10
2001	83	15
2002	92	5
2003	70	3
2004	91	3
2005	96	7
2006	82	3
2007	69	2
2008	93	3
2009	60	1
2010	252	66
2011	214	59
2012	215	63
2013	199	75
2014	224	68
2015	262	83
2016	337	47
2017	248	58
2018	262	36
2019	333	51
2020	332	51
2021	448	59

NOTE: Building permits for the Towns of Blackstone, Burkeville, and Crewe are handled through the Nottoway County Building Inspector's Office.

Nottoway County uses its Zoning Ordinance – Sections 3-1-18 through 3-1-21 – to regulate the issuance of building permits in flood hazards areas. These sections reference the Virginia Uniform Statewide Building Code and have requirements including elevation, other permitting requirements (US Army Corps of Engineers, Virginia Department of Environmental Quality, etc.), and location of utilities. Nottoway County's Building Permit Technician, Susan Tucker, has advised that Nottoway County has not issued any building permits for construction in flood prone areas since 2004, which is when she started working for the County, indicating no increase in development for these areas.

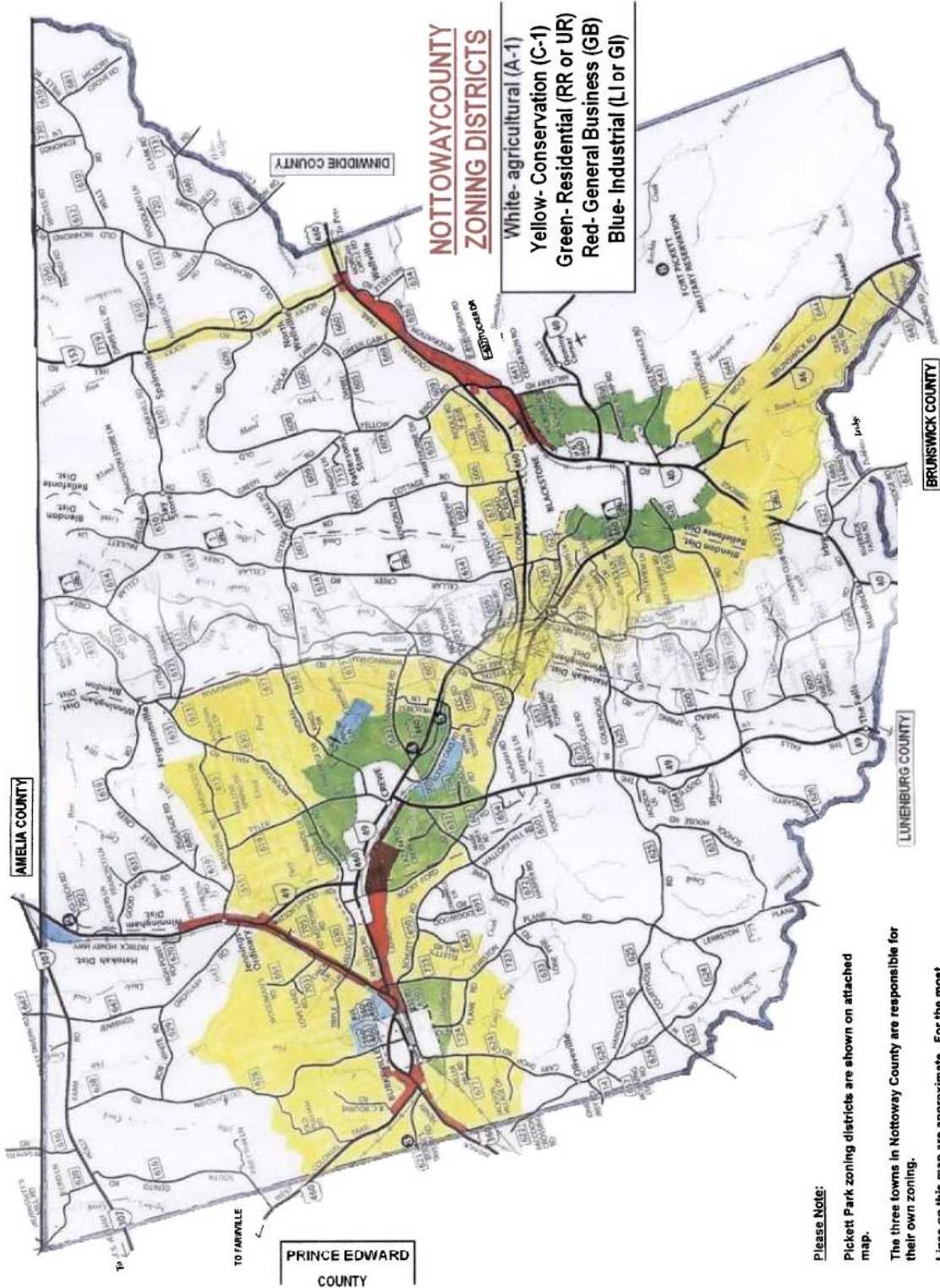
# Nottoway County Land Use Cover Map



Map created by CRC - October 2015  
Source: 2011 National Land Use Cover Dataset

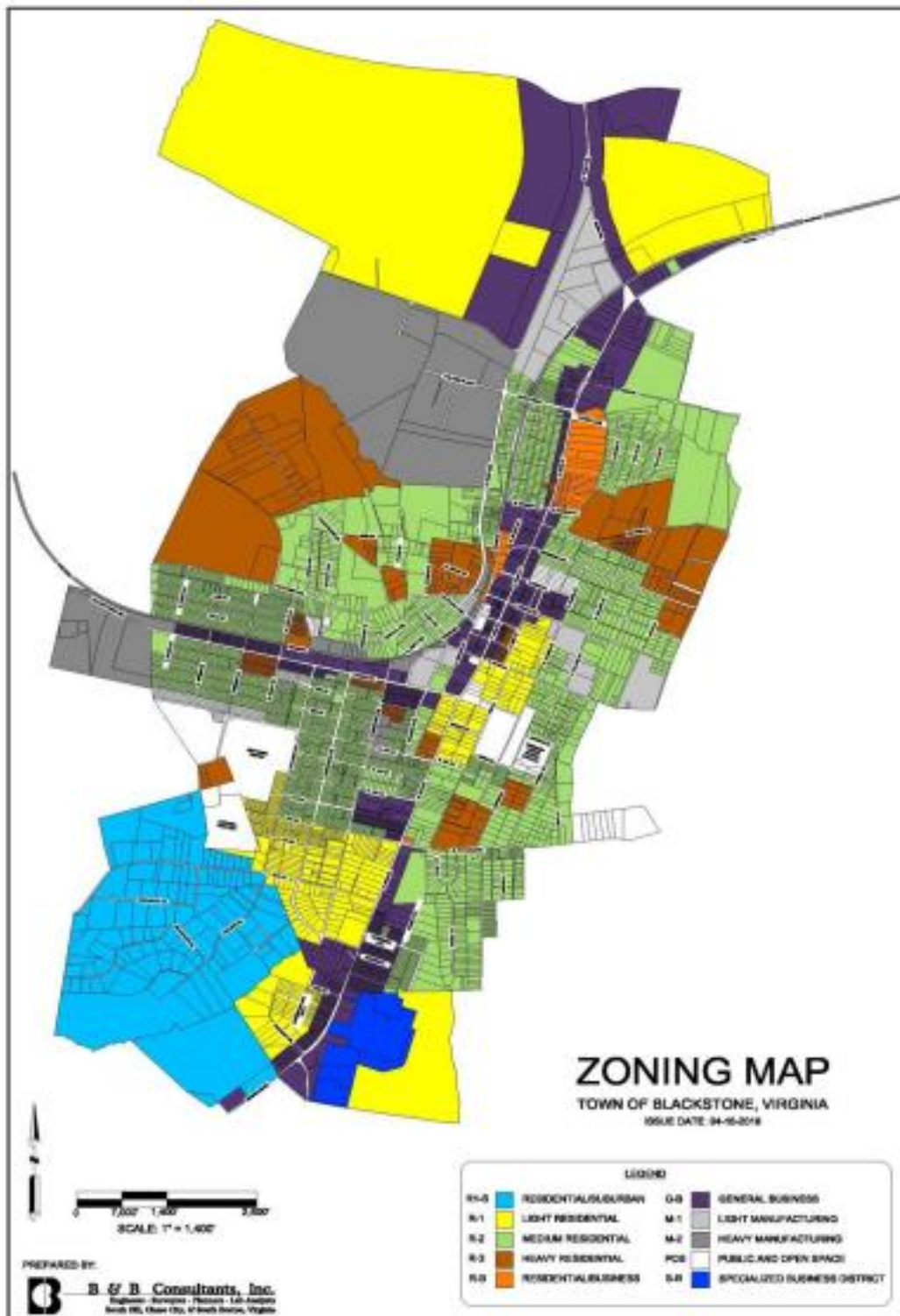


# Nottoway County Future Land Use Map



Source: Nottoway County Planning

## Town of Blackstone Zoning Map



Source: Town of Blackstone Comprehensive Plan, 2020



December 8, 2021

**Town Zoning**

- Residential R-1
- Residential R-2
- Residential R-3
- Residential RMH
- Commercial C-1
- Industrial
- Industrial M-1
- Industrial M-2
- Town Limits

1:54,168

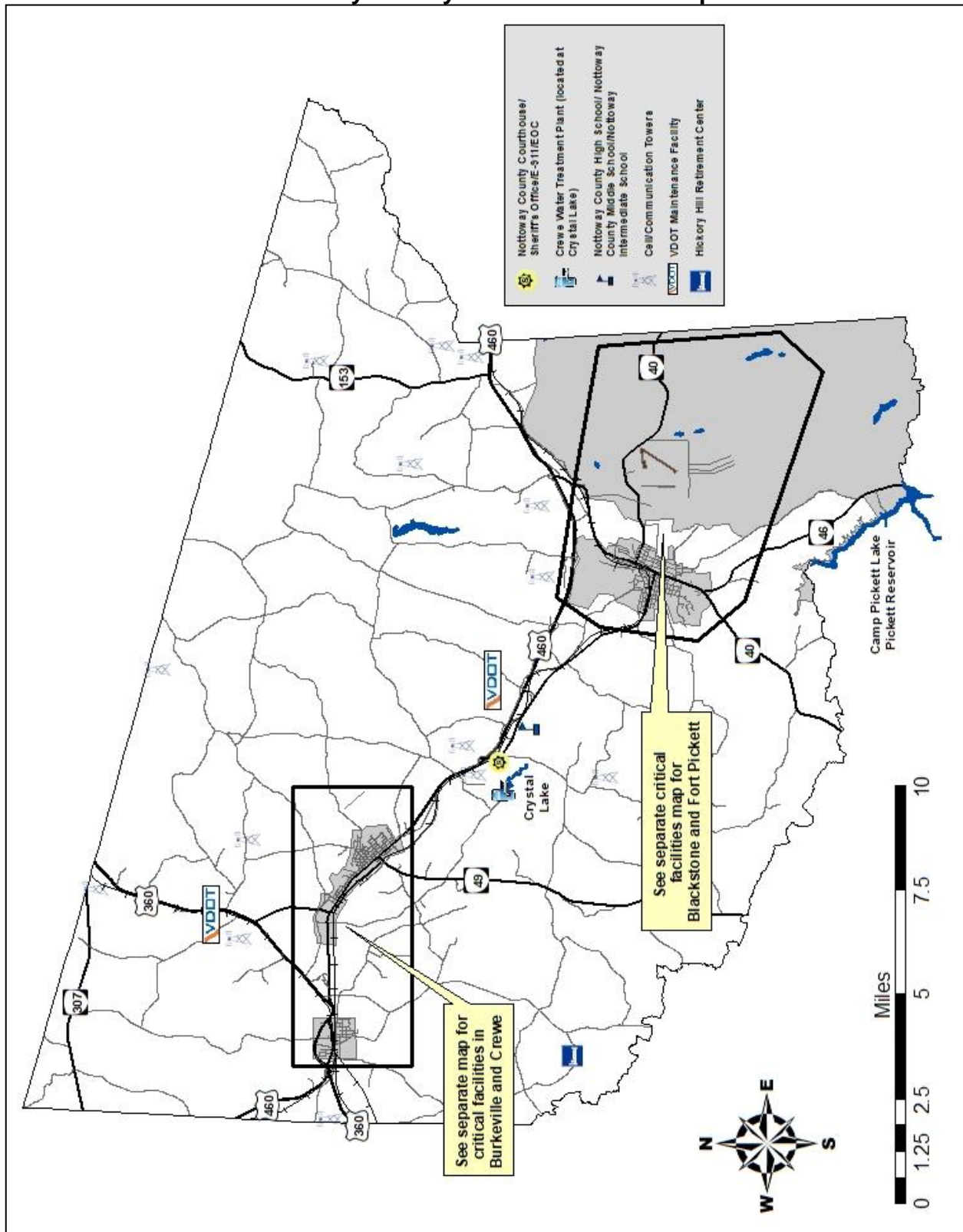
0 0.38 0.75 1.5 mi

0 0.5 1 2 km

Sources: Esri, HERE, Garmin, Intermap, increment P Corp., GEBCO, USGS, FAO, NPS, NRCAN, GeoBase, IGN, Kadaster NL, Ordnance Survey, Esri

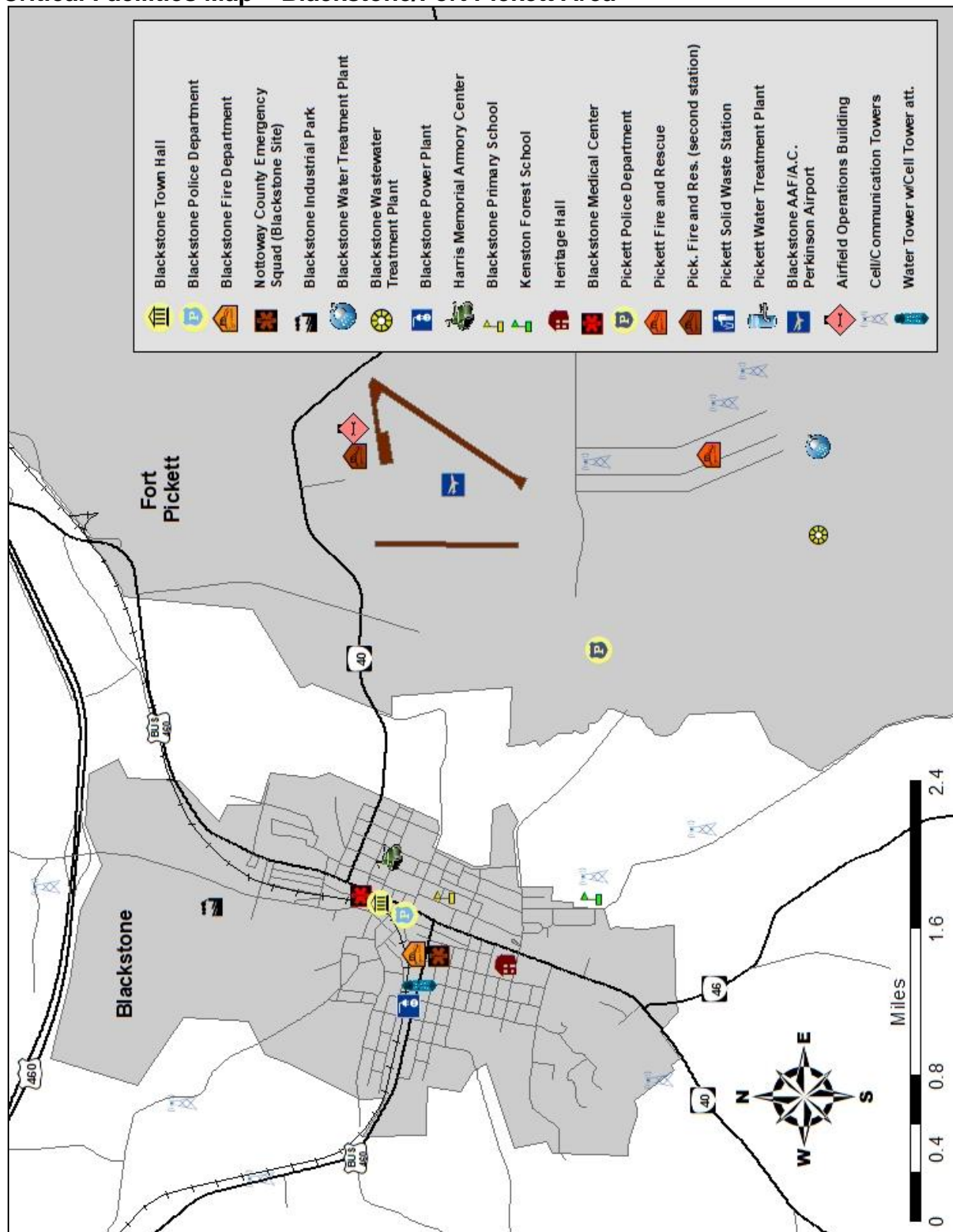
F-22

# Nottoway County Critical Facilities Map



Map created by CRC – July 2016 (amended September 2022)  
Source: Nottoway County

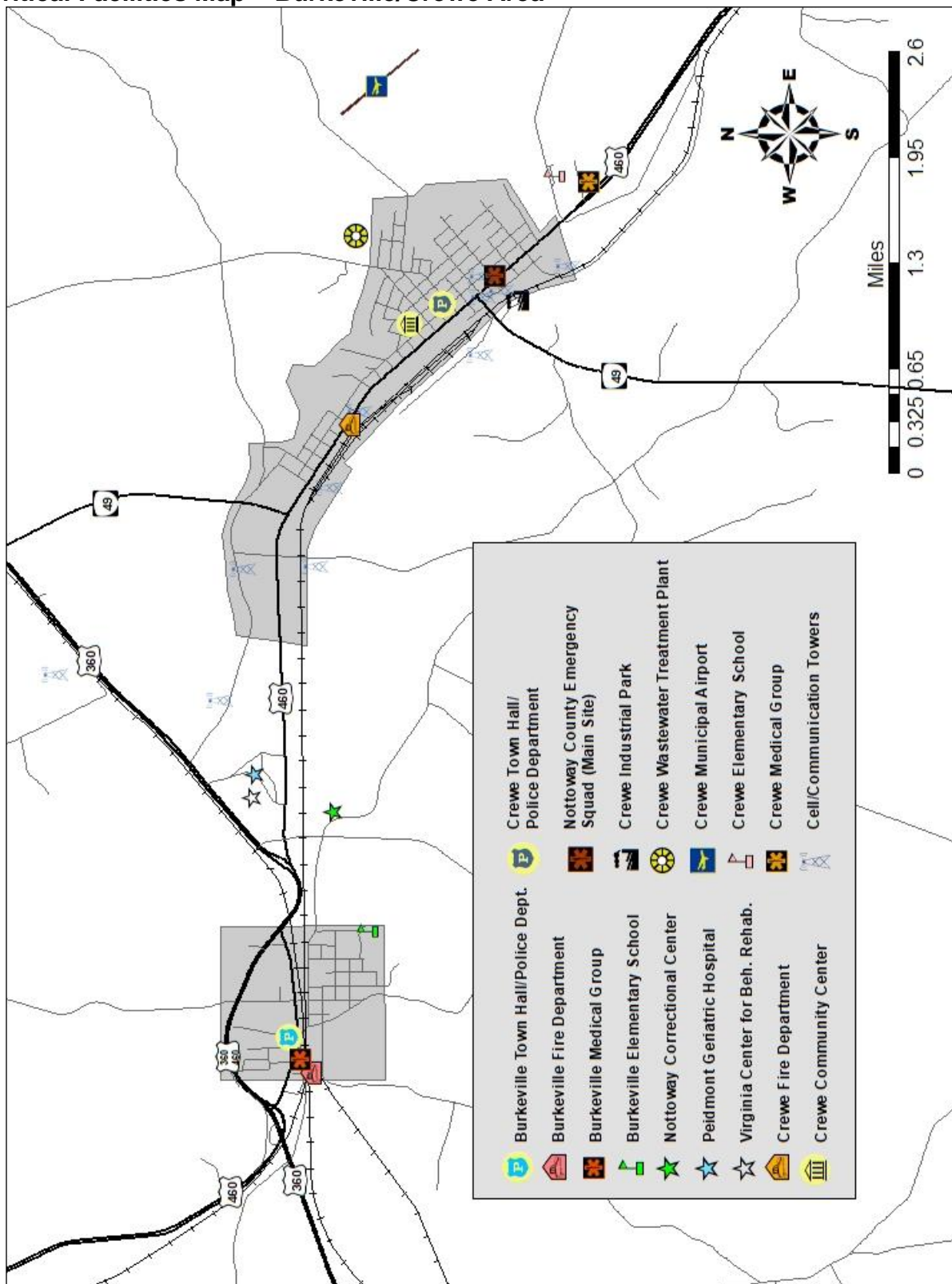
## Critical Facilities Map – Blackstone/Fort Pickett Area –



Map created by CRC – July 2016 (amended September 2022)  
Source: Nottoway County



## Critical Facilities Map – Burkeville/Crewe Area



Map created by CRC – July 2016 (amended September 2022)  
Source: Nottoway County

## NFIP Survey Results

### Nottoway County

The County was asked to review its previous responses to this survey as part of the Plan update process. County staff advised that there are no changes.

#### NATIONAL FLOOD INSURANCE PROGRAM (NFIP) SURVEY

MUNICIPALITY: NOTTOWAY COUNTY

1. FLOODPLAIN IDENTIFICATION AND MAPPING			
Requirement	Recommended Action	Yes/No	Comments
a. Does the municipality maintain accessible copies of an effective Flood Insurance Rate Map (FIRM)/Digital Flood Insurance Rate Map (DFIRM)? Does the municipality maintain accessible copies of the most recent Flood Insurance Study (FIS)?	Place these documents in the local libraries or make available publicly.	Yes	The copies are available at the Administrator's Office for anyone to publicly view.
b. Has the municipality adopted the most current DFIRM/FIRM and FIS?	State the date of adoption, if approved.	Yes	As far as we know the current one that we have is the most updated one.
c. Does the municipality support request for map updates?	If yes, state how.	No	Not sure what mean by support
d. Does the municipality share with Federal Emergency Management Agency (FEMA) any new technical or scientific data that could result in map revisions within 6 months of creation or identification of new data?	If yes, specify how.	No	We would if we had any changes to make but we haven't had any changes to make.
e. Does the municipality provide assistance with local floodplain determinations?	If yes, specify how.	Yes	This is done at the Administrator's Office
f. Does the municipality maintain a record of approved Letters of Map Change?	If yes, specify the responsible office.	No	We haven't had any changes.

2. FLOODPLAIN MANAGEMENT			
Requirement	Recommended Action	Yes/No	Comments
a. Has the municipality adopted a compliant floodplain management ordinance that, at a minimum, regulates the following:	If yes, answer questions (1) through (4) below.	Yes	
(1) Does the municipality issue permits for all proposed development in the Special Flood Hazard Areas (SFHAs)?	If yes, specify the office responsible.	No	Nottoway County does not allow this.
(2) Does the municipality obtain, review, and utilize any Base Flood Elevation (BFE) and floodway data, and/or require BFE data for subdivision proposals and other development proposals larger than 50 lots or 5 acres?	If yes, specify the office responsible.	No	Nottoway County does not require that, but we do look to see if it's in a flood plain or not.
(3) Does the municipality identify measures to keep all new and substantially improved construction reasonably safe from flooding to or above the BFE, including anchoring, using flood-resistant materials, and designing or locating utilities and service facilities to prevent water damage?	If yes, specify the office responsible.	No	
(4) Does the municipality document and maintain records of elevation data that document lowest floor elevation for new or substantially improved structures?	If yes, specify the office responsible.	No	
b. If a compliant floodplain ordinance was adopted, does the municipality enforce the ordinance by monitoring compliance and taking remedial action to correct violations?	If yes, specify how.	Yes, somewhat	We do during the building process. If the house is in flood plain then we don't let them build there.

2. FLOODPLAIN MANAGEMENT			
Requirement	Recommended Action	Yes/No	Comments
c. Has the municipality considered adopting activities that extend beyond the minimum requirements? Examples include: <ul style="list-style-type: none"> <li>• Participation in the Community Rating System</li> <li>• Prohibition of production or storage of chemicals in SFHA</li> <li>• Prohibition of certain types of structures, such as hospitals, nursing homes, and jails in SFHA</li> <li>• Prohibition of certain types of residential housing (manufactured homes) in SFHA</li> <li>• Floodplain ordinances that prohibit any new residential or nonresidential structures in SFHA</li> </ul>	If yes, specify activities.	No	

3. FLOOD INSURANCE			
Requirement	Recommended Action	Yes/No	Comments
a. Does the municipality educate community members about the availability and value of flood insurance?	If yes, specify how.	No	
b. Does the municipality inform community property owners about changes to the DFIRM/FIRM that would impact their insurance rates?	If yes, specify how.	No	Nottoway County does not because there has not been any changes.
c. Does the municipality provide general assistance to community members regarding insurance issues?	If yes, specify how.	No	

## Town of Blackstone

The Town was asked to review its previous responses to this survey as part of the Plan update process. Town staff and officials advised that there are no changes.

### NATIONAL FLOOD INSURANCE PROGRAM (NFIP) SURVEY

MUNICIPALITY: Town of Blackstone

1. FLOODPLAIN IDENTIFICATION AND MAPPING			
Requirement	Recommended Action	Yes/No	Comments
a. Does the municipality maintain accessible copies of an effective Flood Insurance Rate Map (FIRM)/Digital Flood Insurance Rate Map (DFIRM)? Does the municipality maintain accessible copies of the most recent Flood Insurance Study (FIS)?	Place these documents in the local libraries or make available publicly.	yes.	
b. Has the municipality adopted the most current DFIRM/FIRM and FIS?	State the date of adoption, if approved.	NO.	
c. Does the municipality support request for map updates?	If yes, state how.	yes.	As requested by Nottoway Co.
d. Does the municipality share with Federal Emergency Management Agency (FEMA) any new technical or scientific data that could result in map revisions within 6 months of creation or identification of new data?	If yes, specify how.	yes.	
e. Does the municipality provide assistance with local floodplain determinations?	If yes, specify how.	NO.	
f. Does the municipality maintain a record of approved Letters of Map Change?	If yes, specify the responsible office.	NO.	

2. FLOODPLAIN MANAGEMENT			
Requirement	Recommended Action	Yes/No	Comments
a. Has the municipality adopted a compliant floodplain management ordinance that, at a minimum, regulates the following:	If yes, answer questions (1) through (4) below.	NO	
(1) Does the municipality issue permits for all proposed development in the Special Flood Hazard Areas (SFHAs)?	If yes, specify the office responsible.		
(2) Does the municipality obtain, review, and utilize any Base Flood Elevation (BFE) and floodway data, and/or require BFE data for subdivision proposals and other development proposals larger than 50 lots or 5 acres?	If yes, specify the office responsible.		
(3) Does the municipality identify measures to keep all new and substantially improved construction reasonably safe from flooding to or above the BFE, including anchoring, using flood-resistant materials, and designing or locating utilities and service facilities to prevent water damage?	If yes, specify the office responsible.		
(4) Does the municipality document and maintain records of elevation data that document lowest floor elevation for new or substantially improved structures?	If yes, specify the office responsible.		
b. If a compliant floodplain ordinance was adopted, does the municipality enforce the ordinance by monitoring compliance and taking remedial action to correct violations?	If yes, specify how.	yes	

2. FLOODPLAIN MANAGEMENT			
Requirement	Recommended Action	Yes/No	Comments
c. Has the municipality considered adopting activities that extend beyond the minimum requirements? Examples include: <ul style="list-style-type: none"> <li>Participation in the Community Rating System</li> <li>Prohibition of production or storage of chemicals in SFHA</li> <li>Prohibition of certain types of structures, such as hospitals, nursing homes, and jails in SFHA</li> <li>Prohibition of certain types of residential housing (manufactured homes) in SFHA</li> <li>Floodplain ordinances that prohibit any new residential or nonresidential structures in SFHA</li> </ul>	If yes, specify activities.	NO	

3. FLOOD INSURANCE			
Requirement	Recommended Action	Yes/No	Comments
a. Does the municipality educate community members about the availability and value of flood insurance?	If yes, specify how.	NO	
b. Does the municipality inform community property owners about changes to the DFIRM/FIRM that would impact their insurance rates?	If yes, specify how.	yes	
c. Does the municipality provide general assistance to community members regarding insurance issues?	If yes, specify how.	yes	if requested.



## Town of Burkeville

The Town was asked to review its previous responses to this survey as part of the Plan update process. Town staff and officials advised that there are no changes.

### NATIONAL FLOOD INSURANCE PROGRAM (NFIP) SURVEY

MUNICIPALITY: TOWN OF BURKEVILLE

#### 1. FLOODPLAIN IDENTIFICATION AND MAPPING

Requirement	Recommended Action	Yes/No	Comments
a. Does the municipality maintain accessible copies of an effective Flood Insurance Rate Map (FIRM)/Digital Flood Insurance Rate Map (DFIRM)? Does the municipality maintain accessible copies of the most recent Flood Insurance Study (FIS)?	Place these documents in the local libraries or make available publicly.	No	There are no areas within the Town limits that fall under a flood plain. Any hazard mitigation for the Town of Burkeville is governed by Nottoway County.  Most recent flood map on file in the Town office is dated 2009.
b. Has the municipality adopted the most current DFIRM/FIRM and FIS?	State the date of adoption, if approved.	No	Most recent flood map on file in the Town office is dated 2009.
c. Does the municipality support request for map updates?	If yes, state how.	No	
d. Does the municipality share with Federal Emergency Management Agency (FEMA) any new technical or scientific data that could result in map revisions within 6 months of creation or identification of new data?	If yes, specify how.	No	
e. Does the municipality provide assistance with local floodplain determinations?	If yes, specify how.	No	
f. Does the municipality maintain a record of approved Letters of Map Change?	If yes, specify the responsible office.	No	

#### 2. FLOODPLAIN MANAGEMENT

Requirement	Recommended Action	Yes/No	Comments
a. Has the municipality adopted a compliant floodplain management ordinance that, at a minimum, regulates the following:	If yes, answer questions (1) through (4) below.	No	
(1) Does the municipality issue permits for all proposed development in the Special Flood Hazard Areas (SFHAs)?	If yes, specify the office responsible.	No	
(2) Does the municipality obtain, review, and utilize any Base Flood Elevation (BFE) and floodway data, and/or require BFE data for subdivision proposals and other development proposals larger than 50 lots or 5 acres?	If yes, specify the office responsible.	No	
(3) Does the municipality identify measures to keep all new and substantially improved construction reasonably safe from flooding to or above the BFE, including anchoring, using flood-resistant materials, and designing or locating utilities and service facilities to prevent water damage?	If yes, specify the office responsible.	No	
(4) Does the municipality document and maintain records of elevation data that document lowest floor elevation for new or substantially improved structures?	If yes, specify the office responsible.	No	
b. If a compliant floodplain ordinance was adopted, does the municipality enforce the ordinance by monitoring compliance and taking remedial action to correct violations?	If yes, specify how.	No	

2. FLOODPLAIN MANAGEMENT			
Requirement	Recommended Action	Yes/No	Comments
c. Has the municipality considered adopting activities that extend beyond the minimum requirements? Examples include: <ul style="list-style-type: none"> <li>• Participation in the Community Rating System</li> <li>• Prohibition of production or storage of chemicals in SFHA</li> <li>• Prohibition of certain types of structures, such as hospitals, nursing homes, and jails in SFHA</li> <li>• Prohibition of certain types of residential housing (manufactured homes) in SFHA</li> <li>• Floodplain ordinances that prohibit any new residential or nonresidential structures in SFHA</li> </ul>	If yes, specify activities.	No	

3. FLOOD INSURANCE			
Requirement	Recommended Action	Yes/No	Comments
a. Does the municipality educate community members about the availability and value of flood insurance?	If yes, specify how.	No	
b. Does the municipality inform community property owners about changes to the DFIRM/FIRM that would impact their insurance rates?	If yes, specify how.	No	
c. Does the municipality provide general assistance to community members regarding insurance issues?	If yes, specify how.	No	

## Town of Crewe

The Town was asked to review its previous responses to this survey as part of the Plan update process. Town staff and officials advised that there are no changes.

### NATIONAL FLOOD INSURANCE PROGRAM (NFIP) SURVEY

MUNICIPALITY: TOWN OF CREWE

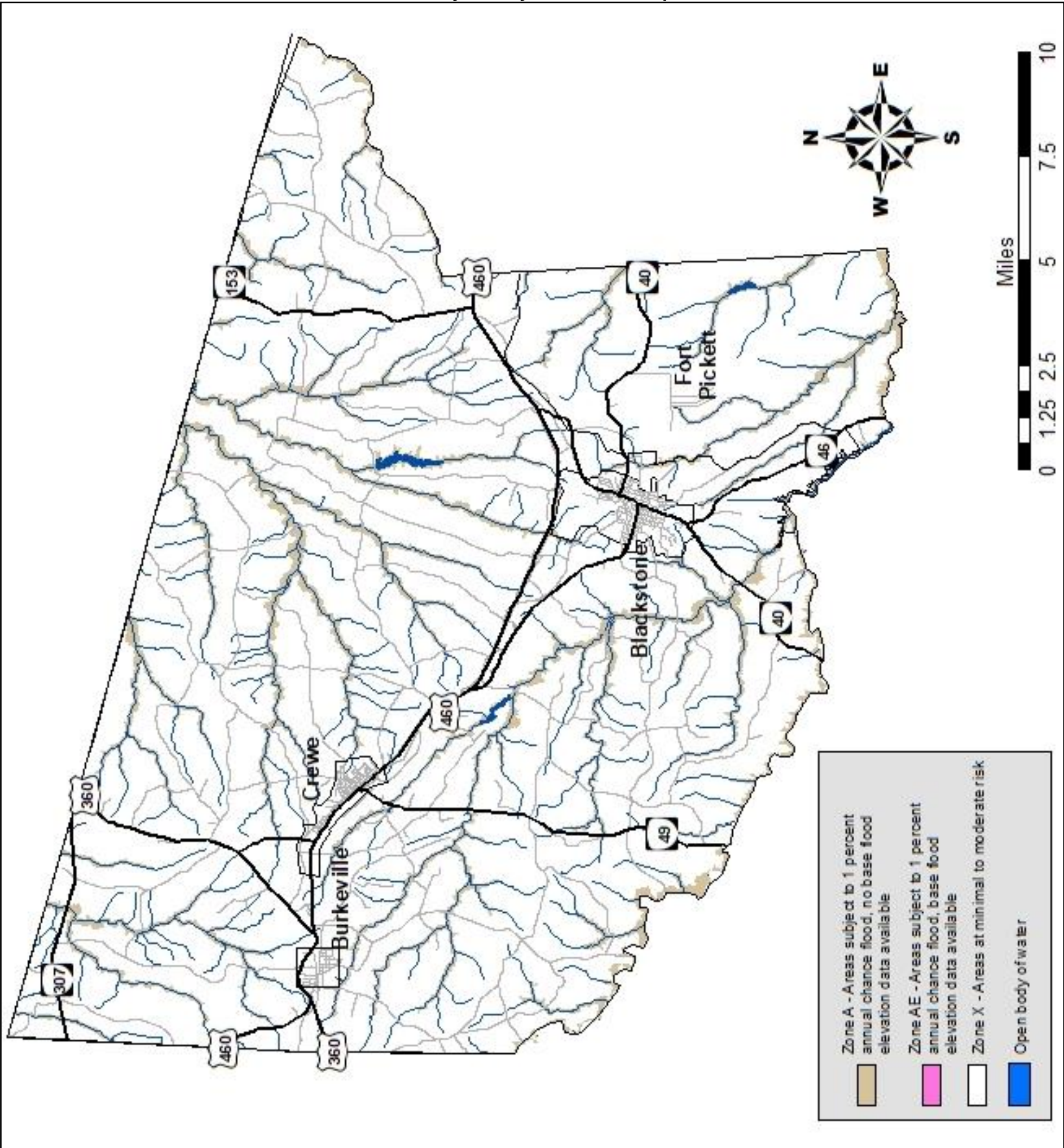
1. FLOODPLAIN IDENTIFICATION AND MAPPING			
Requirement	Recommended Action	Yes/No	Comments
a. Does the municipality maintain accessible copies of an effective Flood Insurance Rate Map (FIRM)/Digital Flood Insurance Rate Map (DFIRM)? Does the municipality maintain accessible copies of the most recent Flood Insurance Study (FIS)?	Place these documents in the local libraries or make available publicly.	No	There are no areas within the Town limits that fall under a flood plain. Any hazard mitigation for the Town of Crewe is governed by Nottoway County.
b. Has the municipality adopted the most current DFIRM/FIRM and FIS?	State the date of adoption, if approved.	No	
c. Does the municipality support request for map updates?	If yes, state how.	No	
d. Does the municipality share with Federal Emergency Management Agency (FEMA) any new technical or scientific data that could result in map revisions within 6 months of creation or identification of new data?	If yes, specify how.	No	
e. Does the municipality provide assistance with local floodplain determinations?	If yes, specify how.	No	
f. Does the municipality maintain a record of approved Letters of Map Change?	If yes, specify the responsible office.	No	

2. FLOODPLAIN MANAGEMENT			
Requirement	Recommended Action	Yes/No	Comments
a. Has the municipality adopted a compliant floodplain management ordinance that, at a minimum, regulates the following:	If yes, answer questions (1) through (4) below.	No	
(1) Does the municipality issue <u>permits</u> for all proposed development in the Special Flood Hazard Areas (SFHAs)?	If yes, specify the office responsible.	No	
(2) Does the municipality obtain, review, and utilize any Base Flood Elevation (BFE) and floodway data, and/or require BFE data for subdivision proposals and other development proposals larger than 50 lots or 5 acres?	If yes, specify the office responsible.	No	
(3) Does the municipality identify measures to keep all new and substantially improved construction reasonably safe from flooding to or above the BFE, including anchoring, using flood-resistant materials, and designing or locating utilities and service facilities to prevent water damage?	If yes, specify the office responsible.	No	
(4) Does the municipality document and maintain records of elevation data that document lowest floor elevation for new or substantially improved structures?	If yes, specify the office responsible.	No	
b. If a compliant floodplain ordinance was adopted, does the municipality enforce the ordinance by monitoring compliance and taking remedial action to correct violations?	If yes, specify how.	No	

2. FLOODPLAIN MANAGEMENT			
Requirement	Recommended Action	Yes/No	Comments
c. Has the municipality considered adopting activities that extend beyond the minimum requirements? Examples include: <ul style="list-style-type: none"> <li>Participation in the Community Rating System</li> <li>Prohibition of production or storage of chemicals in SFHA</li> <li>Prohibition of certain types of structures, such as hospitals, nursing homes, and jails in SFHA</li> <li>Prohibition of certain types of residential housing (manufactured homes) in SFHA</li> <li>Floodplain ordinances that prohibit any new residential or nonresidential structures in SFHA</li> </ul>	If yes, specify activities.	No	

3. FLOOD INSURANCE			
Requirement	Recommended Action	Yes/No	Comments
a. Does the municipality educate community members about the availability and value of flood insurance?	If yes, specify how.	No	
b. Does the municipality inform community property owners about changes to the DFIRM/FIRM that would impact their insurance rates?	If yes, specify how.	No	
c. Does the municipality provide general assistance to community members regarding insurance issues?	If yes, specify how.	No	

Nottoway County Flood Zone Map



Map created by CRC – September 2022 (source: FEMA)





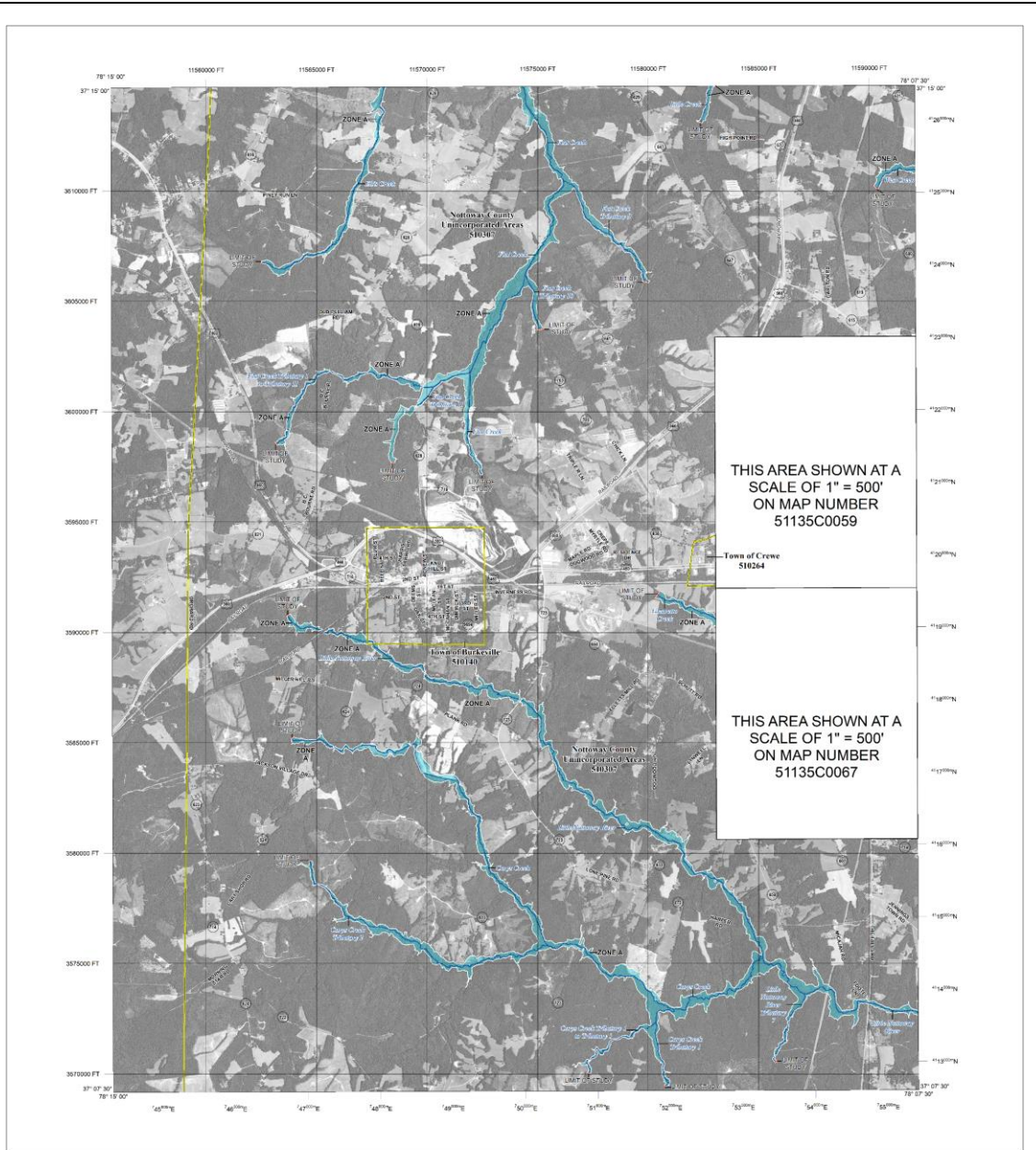






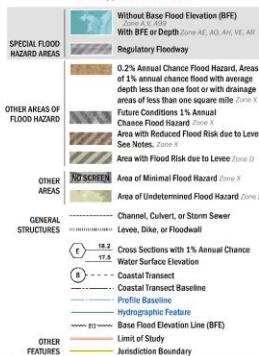






#### FLOOD HAZARD INFORMATION

SEE FIS REPORT FOR DETAILED LEGEND AND INDEX MAP FOR FIRM PANEL LAYOUT  
THE INFORMATION DEPICTED ON THIS MAP AND SUPPORTING  
DOCUMENTATION ARE ALSO AVAILABLE IN DIGITAL FORMAT AT  
[HTTPS://MSC.FEMA.GOV](https://msc.fema.gov)



#### NOTES TO USERS

For information and questions about the Flood Insurance Rate Map (FIRM), available products associated with the FIRM, including: hazard, regulatory, and other map data for each FIRM panel, how to order products, or the National Flood Insurance Program (NFIP) in general, please call the Flood Insurance and Insurance Administration at 1-877-FIRM-HELP (1-877-346-4373) or visit the FIRM Flood Map Request Center website at [floodmaprequest.fema.gov](https://floodmaprequest.fema.gov). Additional products, including: historical maps of the Change in Flood Insurance Study, Report, and/or, Right-of-Way, are available at the same website. These products can be ordered in electronic format from the website.

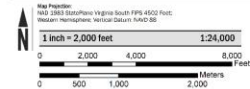
Communities seeking to be added to the FIRM must obtain a current copy of the Flood Insurance Study as well as the current Flood Map. These may be ordered directly from the Flood Map Request Center at the number listed above.

For community and insurance map data refer to the Flood Insurance Study report for the jurisdiction.

To determine if flood insurance is available in the community, contact your insurance agent or call the National Flood Insurance Program at 1-800-648-6800.

Base map information shown on the FIRM was derived from multiple sources, including the United States Geological Survey, United States Census Bureau, and the National Geographic Information System. Community data used 2010 was published in digital format as a Community Information System. Department of Agriculture - Farm Service Agency - National Flood Insurance Study (NFIP) 2010.

#### SCALE



#### PANEL LOCATOR

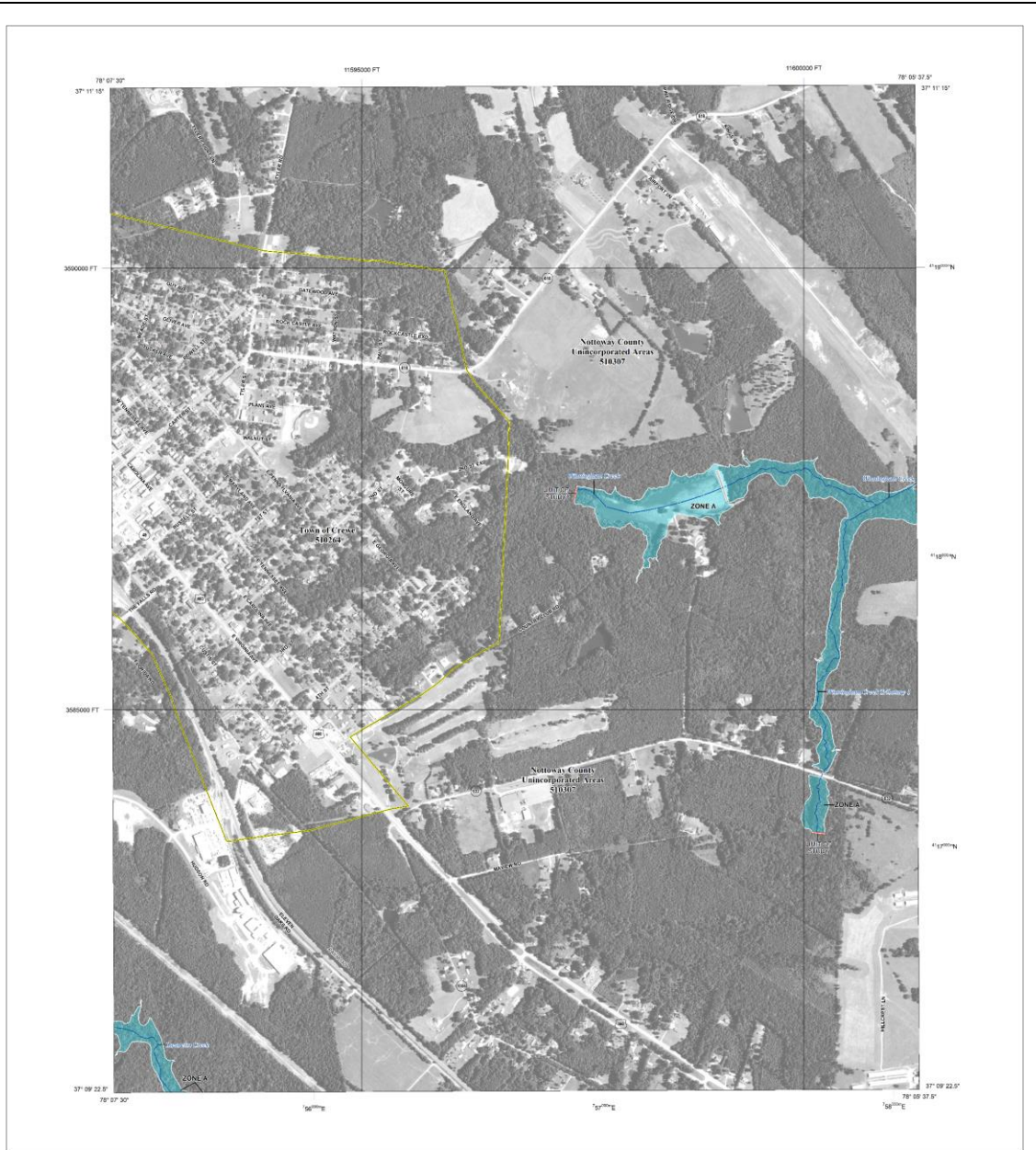


NATIONAL FLOOD INSURANCE PROGRAM  
FLOOD INSURANCE RATE MAP  
NOTTOWAY COUNTY, VIRGINIA  
Panel 75 of 250

COMMUNITY	NUMBER	PANEL	SUFFIX
BURNVILLE TOWN OF	00140	0075	D
CREWE TOWN OF	00204	0075	D
NOTTOWAY COUNTY	00307	0075	D

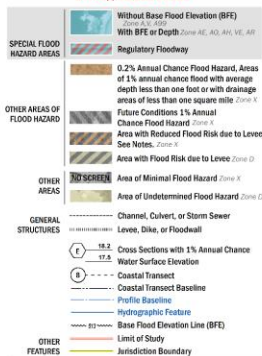
VERSION NUMBER  
2.5.3.6  
MAP NUMBER  
51135C0075D  
Map Revised  
MAY 3, 2022





# FLOOD HAZARD INFORMATION

SEE FIS REPORT FOR DETAILED LEGEND AND INDEX MAP FOR FIRM PANEL LAYOUT  
THE INFORMATION DEPICTED ON THIS MAP AND SUPPORTING  
DOCUMENTATION ARE ALSO AVAILABLE IN DIGITAL FORMAT AT  
[HTTPS://MSC.FEMA.GOV](https://msc.fema.gov)



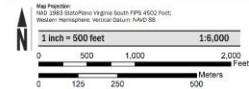
# NOTES TO USERS

For information and questions about the Flood Insurance Rate Map (FIRM), available products associated with the FIRM, including: "water" symbols, the printed map sheet for each FIRM panel, how to order products, or the National Flood Insurance Program (NFIP) in general, please call the Flood Insurance and Insurance Administration at 877-452-6842 or 877-352-6842 or visit the FIRM Panel Map. Panel Maps are available at <https://msc.fema.gov>. Additional products, including digital versions of the FIRM, are available at <https://msc.fema.gov>. Please contact the National Flood Insurance Administration at 877-452-6842 or 877-352-6842 for more information. For information about the FIRM, please contact the National Flood Insurance Administration at 877-452-6842 or 877-352-6842.

Communities planning to build on adjacent FIRM panels must obtain a current copy of the adjacent panel as well as the current FIRM panel. These may be obtained directly from the Flood Map Service Center at the National Flood Insurance Administration. For information and questions about the FIRM, please contact the National Flood Insurance Administration at 877-452-6842 or 877-352-6842.

Base map information shown on the FIRM was derived from multiple sources, including the United States Geological Survey, United States Census Bureau, and the National Oceanic and Atmospheric Administration. Community data used on the FIRM was provided in digital format as a vector file to the United States Department of Agriculture - Farm Service Agency - Rural Flood Office (USDA-RFO).

# SCALE



# PANEL LOCATOR

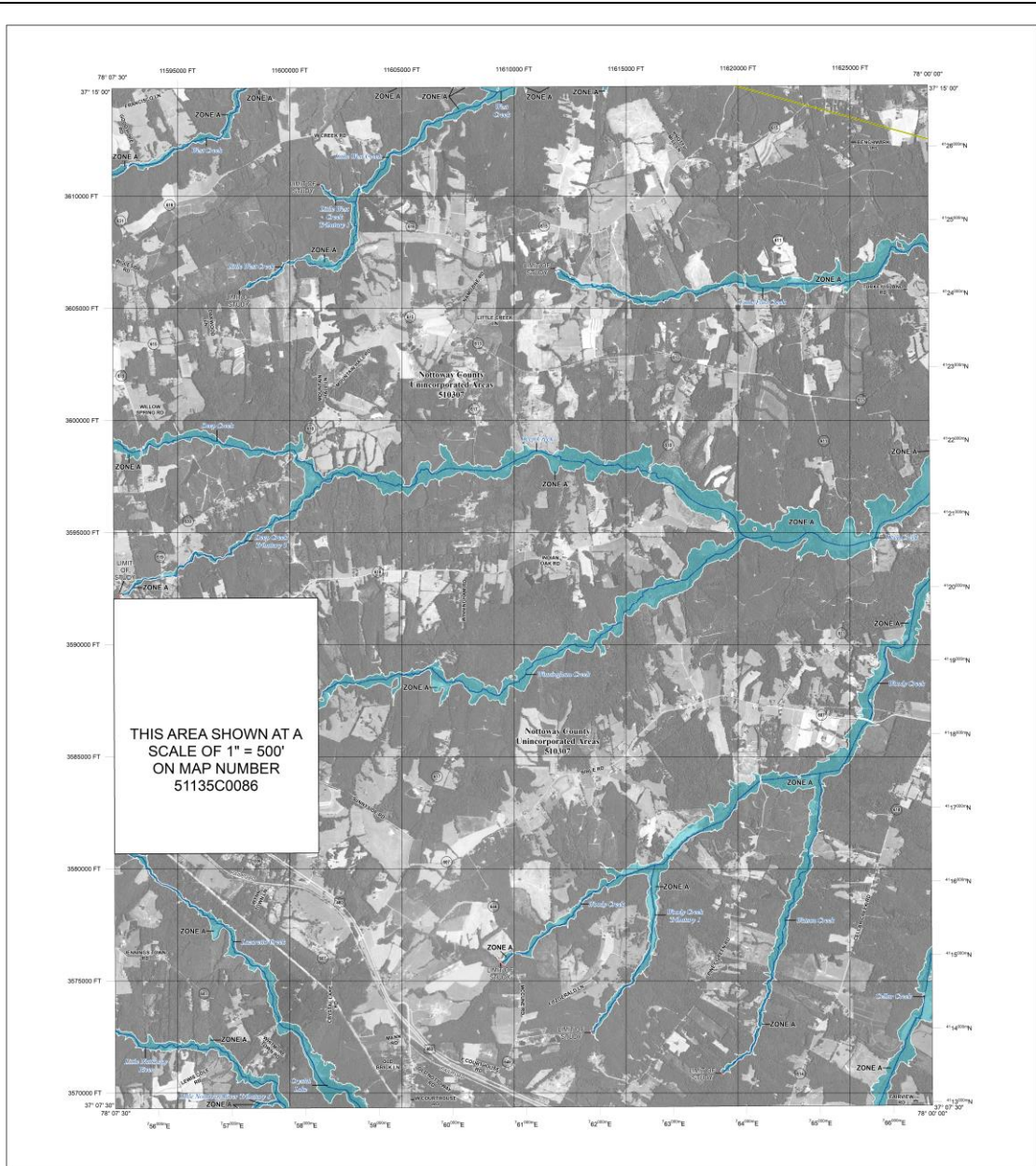


**National Flood Insurance Program**

Panel 86 of 250

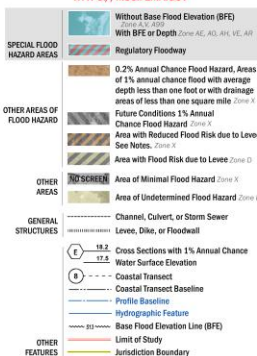
COMMUNITY NUMBER PANEL SUFFIX  
OREN, TOWN OF 310204 0086 01

VERSION NUMBER  
2.5.3.6  
MAP NUMBER  
51135C0086D  
Map Revised  
MAY 3, 2022



#### FLOOD HAZARD INFORMATION

SEE FIS REPORT FOR DETAILED LEGEND AND INDEX MAP FOR FIRM PANEL LAYOUT  
THE INFORMATION DEPICTED ON THIS MAP AND SUPPORTING  
DOCUMENTATION ARE ALSO AVAILABLE IN DIGITAL FORMAT AT  
[HTTPS://MSC.FEMA.GOV](https://msc.fema.gov)



#### NOTES TO USERS

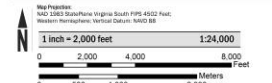
For information and questions about the Flood Insurance Rate Map (FIRM), available products associated with the FIRM, including: historic updates, the current map data for your FIRM area, how to order products, or the National Flood Insurance Program (NFIP) in general, please visit the Flood Insurance and Insurance Exchange at [www.flood.gov](https://www.flood.gov) or visit the Flood Insurance Rate Map (FIRM) website at [www.firm.gov](https://www.firm.gov). Available products include: digital products, printed products, and digital products. For more information, visit the Flood Insurance Rate Map (FIRM) website at [www.firm.gov](https://www.firm.gov).

Communities showing land on adjacent FIRM panels that either a current map of the adjacent panel as well as the current FIRM data. These are the adjacent panels from the Flood Map Service Center at the number listed above.

For community and countywide map data refer to the Flood Insurance Study report for this jurisdiction. To determine if flood insurance is available in the community, contact your insurance agent or call the National Flood Insurance Program at 1-800-438-6023.

Base map information shown on the FIRM was derived from multiple sources, including the United States Geological Survey, United States Census Bureau, and the Virginia Geographic Information System. Community-level data was provided in digital format as a vector illustration by the United States Department of Agriculture - Farm Service Agency - Rural Flood Office (2004, 2010, 2015).

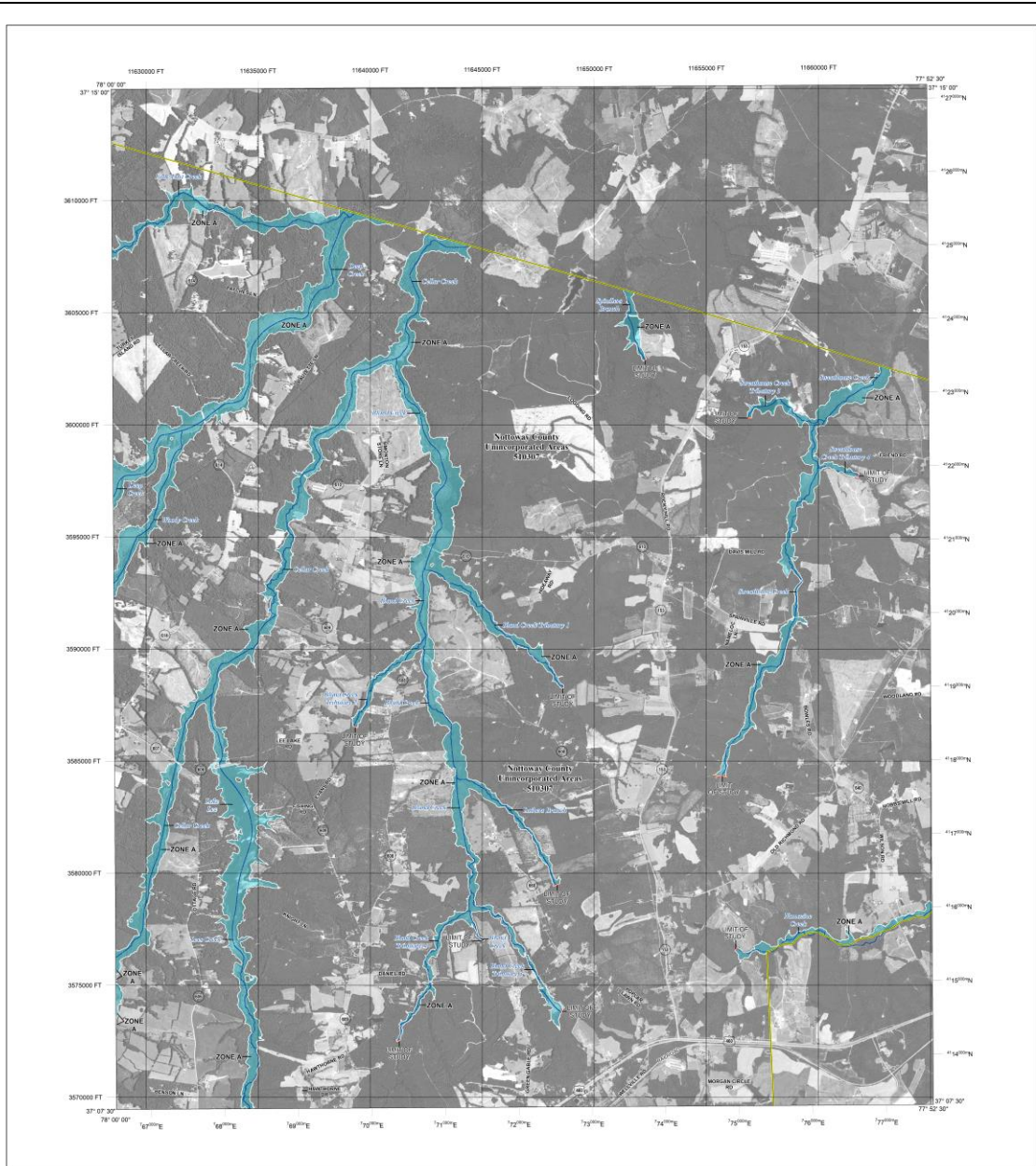
#### SCALE



#### PANEL LOCATOR

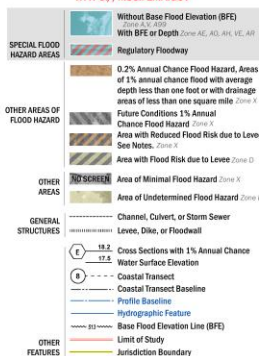






# FLOOD HAZARD INFORMATION

SEE THIS REPORT FOR DETAILED LEGEND AND INDEX MAP FOR FIRM PANEL LAYOUT  
 THE INFORMATION DEPICTED ON THIS MAP AND SUPPORTING  
 DOCUMENTATION ARE ALSO AVAILABLE IN DIGITAL FORMAT AT  
[HTTPS://MSC.FEMA.GOV](https://msc.fema.gov)



# NOTES TO USERS

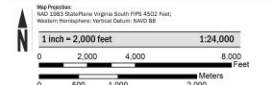
For information and questions about the Flood Insurance Rate Map (FIRM), available products associated with the FIRM, including: historic versions, the current map data for each FIRM panel, how to order products, or the National Flood Insurance Program (NFIP) in general, please visit the Flood Insurance and Insurance Exchange at [www.flood.gov](https://www.flood.gov) or call 1-800-453-5867. For the latest Flood Insurance Rate Map (FIRM) data, visit [www.flood.gov](https://www.flood.gov) or call 1-800-453-5867. For more information about the Flood Insurance Rate Map (FIRM) data, visit [www.flood.gov](https://www.flood.gov) or call 1-800-453-5867.

Communities showing land on adjacent FIRM panels must either a current copy of the adjacent panel as well as the current FIRM data. These data are obtained directly from the Flood Map Service Center at the National Flood Insurance Program at 1400-A-0001.

To determine if flood insurance is available in the community, contact your insurance agent or call the National Flood Insurance Program at 1-800-453-5867.

Base map information shown on the FIRM was derived from multiple sources, including the United States Geological Survey, United States Census Bureau, and the Virginia Geographic Information System. Orthorectified aerial 2010 data provided in digital format as a 1-meter resolution by the United States Department of Agriculture - Farm Service Agency - Aerial Photo Office (2004-2010).

# SCALE



# PANEL LOCATOR



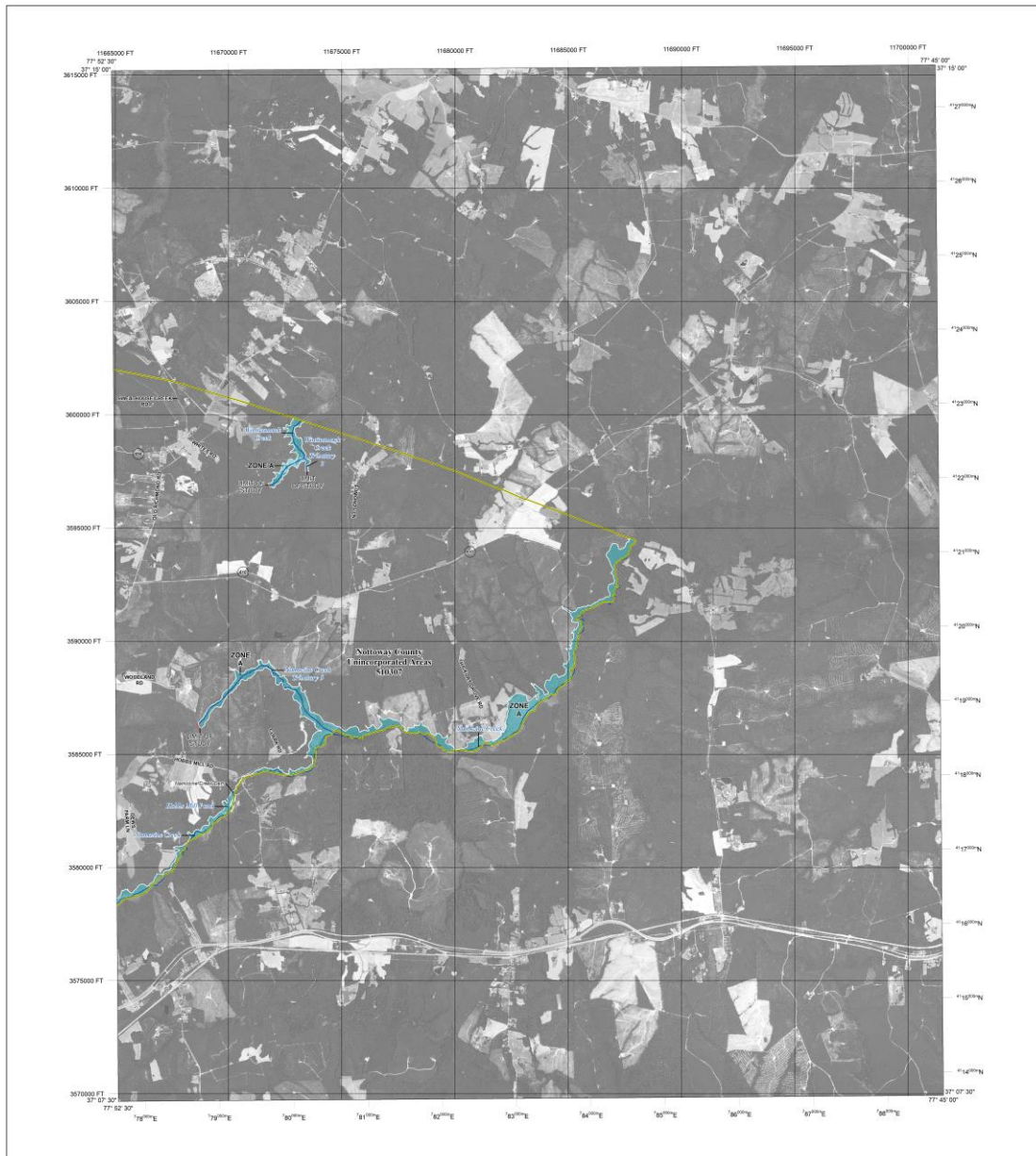
**National Flood Insurance Program**

**NATIONAL FLOOD INSURANCE PROGRAM**  
**FLOOD INSURANCE RATE MAP**  
**NOTOWAY COUNTY, VIRGINIA**  
 Not Incorporated Flood  
 Panel 125 or 250

Panel Contains:

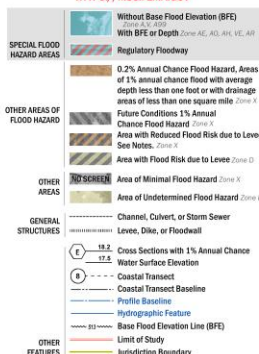
COMMUNITY	NUMBER	PANEL	SUFFIX
NOTOWAY COUNTY	510307	025	D

VERSION NUMBER  
 2.5.3.6  
 MAP NUMBER  
 51135001250  
 Map Revised  
 MAY 3, 2022



# FLOOD HAZARD INFORMATION

SEE THIS REPORT FOR DETAILED LEGEND AND INDEX MAP FOR FIRM PANEL LAYOUT  
 THE INFORMATION DEPICTED ON THIS MAP AND SUPPORTING  
 DOCUMENTATION ARE ALSO AVAILABLE IN DIGITAL FORMAT AT  
[HTTPS://MSC.FEMA.GOV](https://msc.fema.gov)



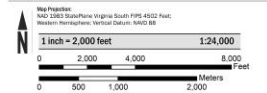
# NOTES TO USERS

For information and questions about the Flood Insurance Rate Map (FIRM), available products associated  
 with the FIRM, including: hazard overlays, the current map data for your FIRM panel, how to order  
 products, or the National Flood Insurance Program (NFIP) in general, please visit the  
 Flood Insurance and Insurance Exchange at 1-877-FLOOD-HELP (1-877-366-3627) or visit the FIRM Flood  
 Hazard Center website at <https://flood.fema.gov>. Available products may include: Flood Insurance  
 Rate Map, Flood Insurance Study, Flood Insurance Study Report, and/or digital versions of the map  
 data or these products can be ordered or obtained directly from the website.

Communities showing land use adjacent FIRM panels must either a current map of the adjacent panel as well as  
 the current FIRM panel. These maps are obtained directly from the Flood Insurance Study Zone at the number  
 listed above.  
 For community and countywide map data refer to the Flood Insurance Study report for the jurisdiction.  
 To determine if flood insurance is available in the community, contact your insurance agent or call the National  
 Flood Insurance Program at 1-800-438-6023.

Base map information shown on the FIRM was derived from multiple sources, including the United States  
 Geological Survey, United States Census Bureau, and the Virginia Geographic Information Network.  
 Orthorectified aerial 2010 data provided in digital format as a raster indication for the United States  
 Department of Agriculture - Farm Service Agency - Aerial Photo Office (2004\_FSA\_4000).

# SCALE



# PANEL LOCATOR



\* PANEL NOT PRINTED

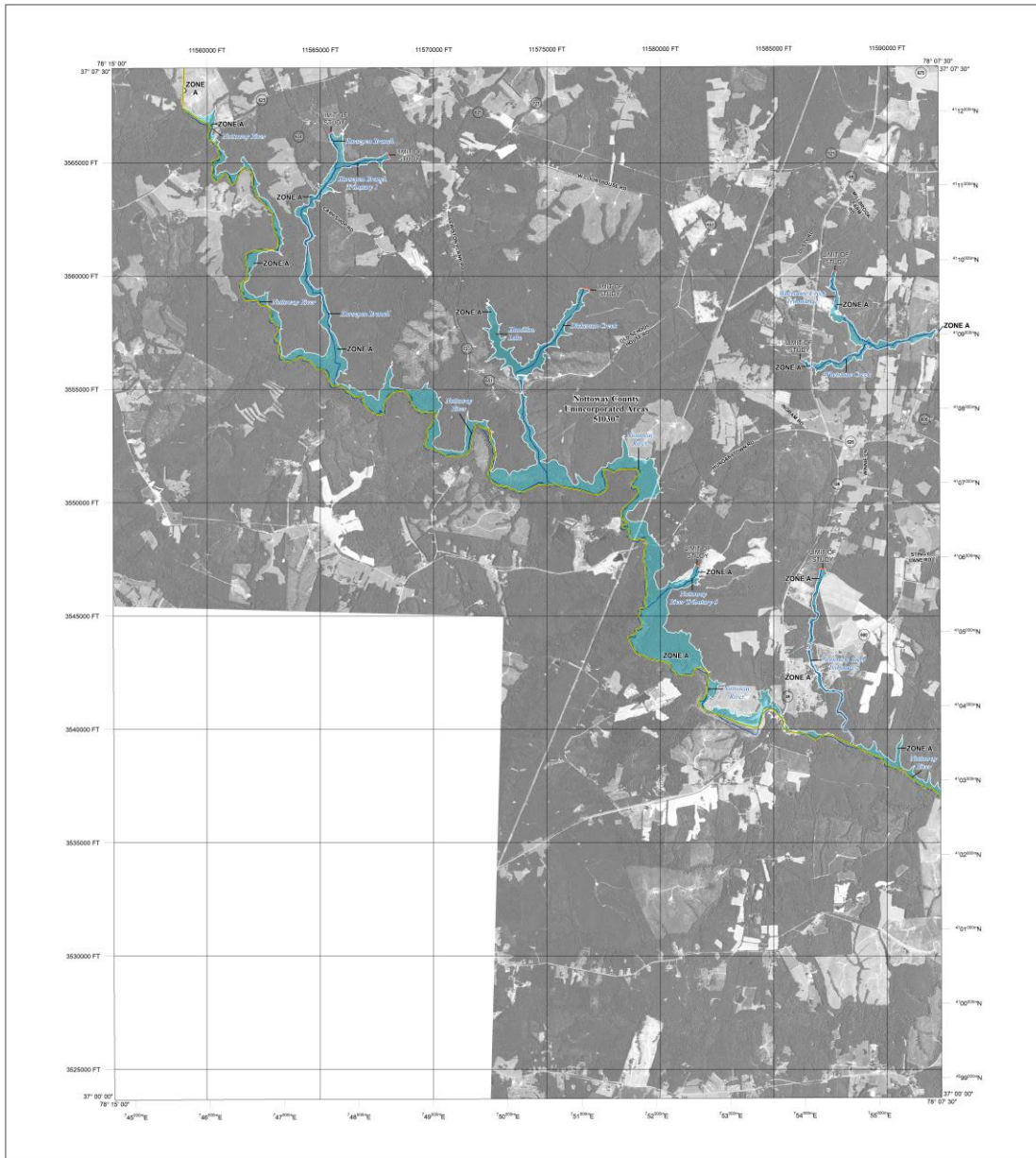


**NATIONAL FLOOD INSURANCE PROGRAM**  
 FLOOD INSURANCE RATE MAP  
 NOTTOWAY COUNTY, VIRGINIA  
 Panel 150 of 250

Panel Contains:  
 COMMUNITY NUMBER PANEL SUFFIX  
 NOTTOWAY COUNTY 510307 0000 01

VERSION NUMBER  
 2.5.3.6  
 MAP NUMBER  
 51135C015000  
 Map Revised  
 MAY 3, 2022





# FLOOD HAZARD INFORMATION

SEE FIRM REPORT FOR DETAILED LEGEND AND INDEX MAP FOR FIRM PANEL LAYOUT  
THE INFORMATION DEPICTED ON THIS MAP AND SUPPORTING  
DOCUMENTATION ARE ALSO AVAILABLE IN DIGITAL FORMAT AT  
[HTTPS://MSC.FEMA.GOV](https://msc.fema.gov)

SPECIAL FLOOD HAZARD AREAS		Without Base Flood Elevation (BFE)
		With BFE or Depth (Zone AE, AH, AL, VE, VE1, VE2)
OTHER AREAS OF FLOOD HAZARD		Regulatory Floodway
		0.2% Annual Chance Flood Hazard, Areas of 1% annual chance flood with average depth less than one foot or with drainage areas of less than one square mile (Zone X)
		Future Conditions 1% Annual Chance Flood Hazard (Zone X)
		Area with Reduced Flood Risk due to Levee Sea Notes (Zone X)
OTHER AREAS		Area with Flood Risk due to Levee (Zone D)
		Area of Minimal Flood Hazard (Zone X)
GENERAL STRUCTURES		Area of Undetermined Flood Hazard (Zone D)
		Channel, Culvert, or Storm Sewer Levee, Dike, or Floodwall
OTHER FEATURES		Cross Sections with 1% Annual Chance Water Surface Elevation
		Coastal Transect Profile Baseline Hydrographic Feature
OTHER FEATURES		Base Flood Elevation Line (BFE)
		Limit of Study Jurisdiction Boundary

# NOTES TO USERS

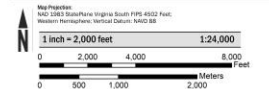
For information and questions about the Flood Insurance Rate Map (FIRM), available products associated with the FIRM, including, but not limited to, the current map data for each FIRM panel, how to order products, or the National Flood Insurance Program (NFIP), in general, please call the 24-hour toll-free number 1-800-358-3447 or visit the NFIP website at <https://www.flood.gov>. For more information, please contact your local insurance agent or the National Flood Insurance Program at 1-800-358-3447.

Communities showing land on adjacent FIRM panels must obtain a current copy of the adjacent panel as well as the current FIRM panel. These may be obtained directly from the Flood Map Service Center at the number listed above.

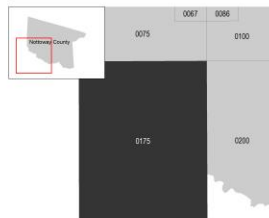
For community and countywide map data refer to the Flood Insurance Study report for the jurisdiction. To determine if flood insurance is available in the community, contact your insurance agent or call the National Flood Insurance Program at 1-800-358-3447.

Base map information shown on the FIRM was derived from multiple sources, including the United States Geological Survey, United States Census Bureau, and the Virginia Geographic Information Network. Orthorectified aerial 2010 was provided in digital format as a raster resolution by the United States Department of Agriculture - Farm Service Agency - Aerial Photo Library (APL) at <https://www.fsa.usda.gov>.

# SCALE



# PANEL LOCATOR



\* PANEL NOT PRINTED



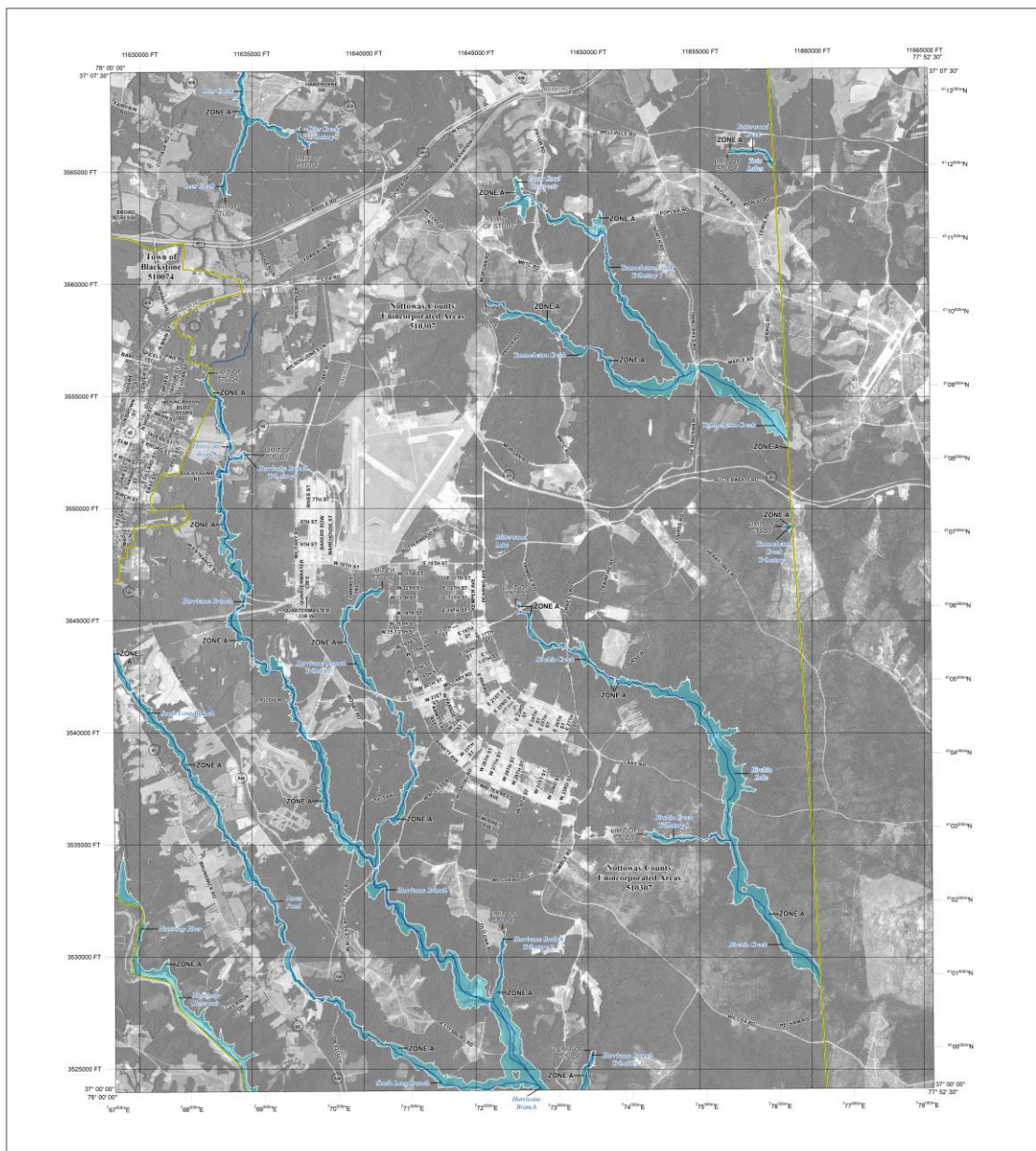
**NATIONAL FLOOD INSURANCE PROGRAM**  
FLOOD INSURANCE RATE MAP  
NOTTOWAY COUNTY, VIRGINIA  
AND IMMEDIATE AREAS  
Panel 175 of 250

Panel Contains:  
COMMUNITY NUMBER PANEL SUFFIX  
NOTTOWAY COUNTY SUB307 0075 D

VERSION NUMBER  
2.5.3.6  
MAP NUMBER  
51139C01750  
Map Revised  
MAY 3, 2022

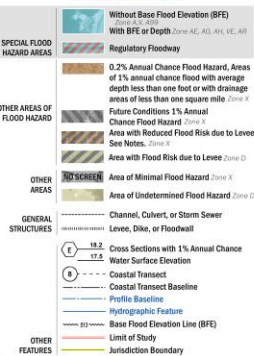






# FLOOD HAZARD INFORMATION

SEE FIRM REPORT FOR DETAILED LEGEND AND INDEX MAP FOR FIRM PANEL LAYOUT  
 THE INFORMATION DEPICTED ON THIS MAP AND SUPPORTING  
 DOCUMENTATION ARE ALSO AVAILABLE IN DIGITAL FORMAT AT  
[HTTPS://MSC.FEMA.GOV](https://msc.fema.gov)



# NOTES TO USERS

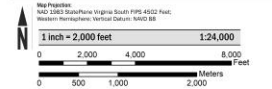
For information and questions about the Flood Insurance Rate Map (FIRM), available products associated with the FIRM, including: historic reports, the current map data for each FIRM panel, how to order products, or the National Flood Insurance Program (NFIP) in general, please visit the Flood Insurance and Insurance Exchange at <https://www.flood.gov> or call 1-800-453-5867. For the Flood Insurance Rate Map (FIRM) data, visit <https://www.flood.gov> or call 1-800-453-5867. For the Flood Insurance Rate Map (FIRM) data, visit <https://www.flood.gov> or call 1-800-453-5867.

Communities seeking to join or rejoin the NFIP must obtain a current copy of the adjacent panel as well as the current FIRM data. These data are available directly from the Flood Map Service Center at the national level above.

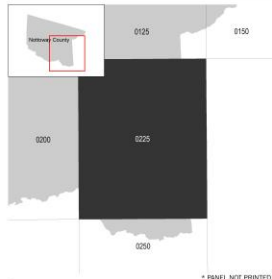
For community and countywide map data, visit the Flood Insurance Study report for the jurisdiction. To determine if flood insurance is available in the community, contact your insurance agent or call the National Flood Insurance Program at 1-800-453-5867.

Base map information shown on the FIRM was derived from multiple sources, including the United States Geological Survey, United States Census Bureau, and the Virginia Geographic Information System. Community-based data was provided in digital format as a 1-meter resolution by the United States Department of Agriculture - Farm Service Agency - National Flood Office (2004, 2010, 2015).

# SCALE



# PANEL LOCATOR



**National Flood Insurance Program**

Panel Contains:

COMMUNITY	NUMBER	PANEL	SUFFIX
BLACKSTONE, TOWN OF	510074	025	D
NOTOWAY COUNTY	510307	025	D

**NATIONAL FLOOD INSURANCE PROGRAM**

**FLOOD INSURANCE RATE MAP**

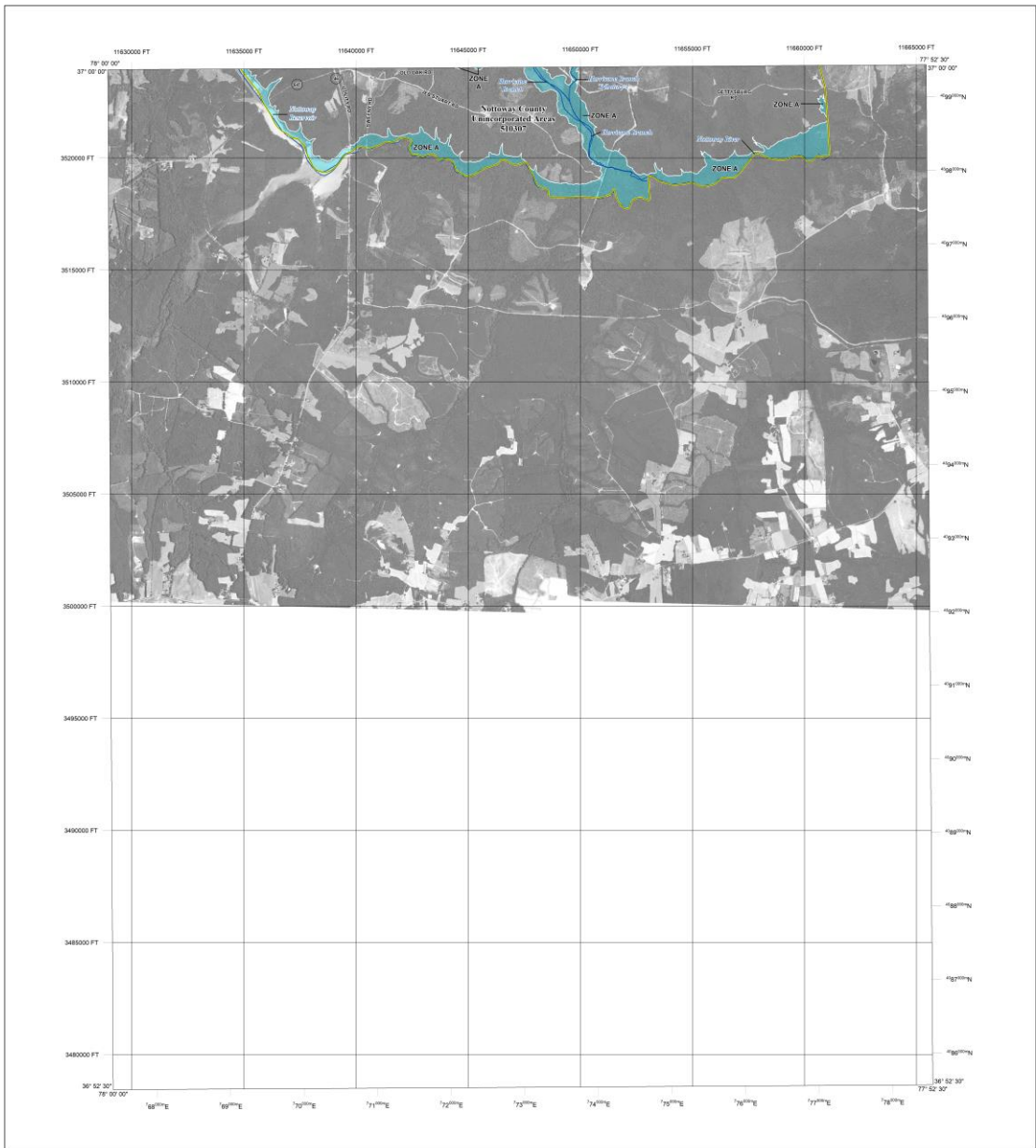
**NOTOWAY COUNTY, VIRGINIA**

**Panel 225 or 250**

VERSION NUMBER  
2.5.3.6

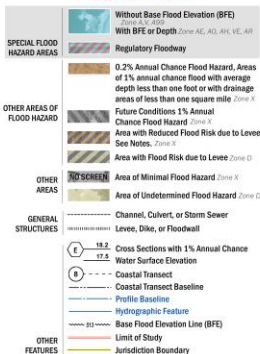
MAP NUMBER  
51135002250

Map Revised  
MAY 3, 2022



#### FLOOD HAZARD INFORMATION

SEE FIS REPORT FOR DETAILED LEGEND AND INDEX MAP FOR FIRM PANEL LAYOUT  
 THE INFORMATION DEPICTED ON THIS MAP AND SUPPORTING  
 DOCUMENTATION ARE ALSO AVAILABLE IN DIGITAL FORMAT AT  
[HTTPS://MSC.FEMA.GOV](https://MSC.FEMA.GOV)



#### NOTES TO USERS

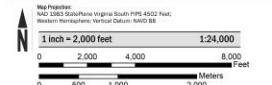
For information and questions about the Flood Insurance Rate Map (FIRM), available products associated with the FIRM, including: historic updates, the current map date for each FIRM panel, how to order products, or the National Flood Insurance Program (NFIP) in general, please visit the Flood Insurance and Insurance Exchange at: <https://www.fema.gov/nfip> or call the NFIP Flood Insurance Call Center at 1-800-358-7777. For more information, visit <https://www.fema.gov/nfip> or call the NFIP Flood Insurance Call Center at 1-800-358-7777. For more information, visit <https://www.fema.gov/nfip> or call the NFIP Flood Insurance Call Center at 1-800-358-7777.

Communities showing land on adjacent FIRM panels must either a current copy of the adjacent panel as well as the current FIRM date. These may be obtained directly from the Flood Map Service Center at the number listed above.

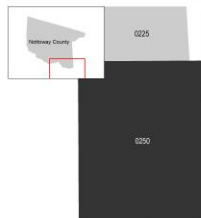
For community and countywide map dates refer to the Flood Insurance Study report for this jurisdiction. To determine if flood insurance is available in the community, contact your insurance agent or call the National Flood Insurance Program at 1-800-438-8422.

Base map information shown on the FIRM was derived from multiple sources, including the United States Geological Survey, United States Census Bureau, and the Virginia Geographic Information Network. Orthorectified aerial 2010 data provided in digital format is a 1-meter resolution by the United States Department of Agriculture - Farm Service Agency - Aerial Photo Office (2004\_FSA\_APO).

#### SCALE



#### PANEL LOCATOR



\* PANEL NOT PRINTED



NATIONAL FLOOD INSURANCE PROGRAM  
 FLOOD INSURANCE RATE MAP  
 NOTTOWAY COUNTY, VIRGINIA  
 Panel 250 of 250

Panel Contains:  
 COMMUNITY NUMBER PANEL SUFFIX  
 NOTTOWAY COUNTY 510307 0250 D

VERSION NUMBER  
 2.5.3.6  
 MAP NUMBER  
 5113SC02500  
 Map Revised  
 MAY 3, 2022